

For Research Use Only

# TMEM168 Polyclonal antibody

Catalog Number: 22527-1-AP

3 Publications



## Basic Information

### Catalog Number:

22527-1-AP

### Size:

150ul, Concentration: 1000 ug/ml by Nanodrop and 547 ug/ml by Bradford method using BSA as the standard;

### Source:

Rabbit

### Isotype:

IgG

### Immunogen Catalog Number:

AG18337

### GenBank Accession Number:

BC030804

### GeneID (NCBI):

64418

### UNIPROT ID:

Q9H0V1

### Full Name:

transmembrane protein 168

### Calculated MW:

697 aa, 80 kDa

### Observed MW:

110-130 kDa

### Purification Method:

Antigen Affinity purified

### Recommended Dilutions:

WB 1:1000-1:4000

IP 0.5-4.0 ug for 1.0-3.0 mg of total protein lysate

IHC 1:20-1:200

## Applications

### Tested Applications:

WB, IHC, ELISA

### Cited Applications:

WB, IP, IF

### Species Specificity:

human, mouse, rat

### Cited Species:

human

**Note-IHC: suggested antigen retrieval with TE buffer pH 9.0; (\*) Alternatively, antigen retrieval may be performed with citrate buffer pH 6.0**

### Positive Controls:

WB : mouse brain tissue, PC-3 cells, rat brain tissue

IP : mouse brain tissue,

IHC : human testis tissue,

## Notable Publications

Author	Pubmed ID	Journal	Application
Jie Xu	30940290	Oncol Res	
Akio Shimizu	32175648	FASEB J	WB, IF
Le Kim Chi Nguyen	34086898	J Biochem	IP, WB

## Storage

### Storage:

Store at -20°C. Stable for one year after shipment.

### Storage Buffer:

PBS with 0.02% sodium azide and 50% glycerol, pH7.3

Aliquoting is unnecessary for -20°C storage

\*\*\* 20ul sizes contain 0.1% BSA

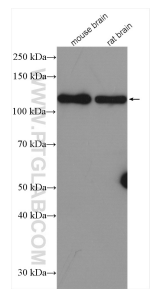
For technical support and original validation data for this product please contact:

T: 1 (888) 4PTGLAB (1-888-478-4522) (toll free in USA), or 1(312) 455-8498 (outside USA)

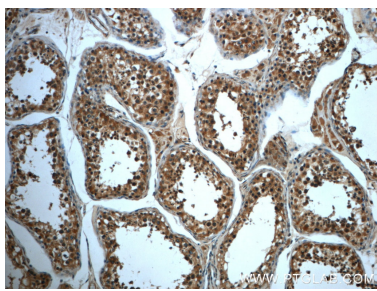
E: [proteintech@ptglab.com](mailto:proteintech@ptglab.com)  
W: [ptglab.com](http://ptglab.com)

This product is exclusively available under Proteintech Group brand and is not available to purchase from any other manufacturer.

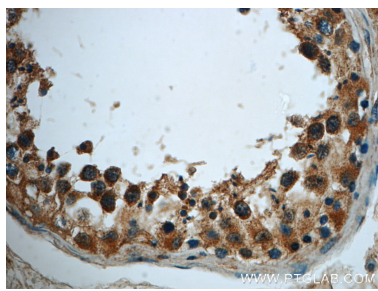
Selected Validation Data



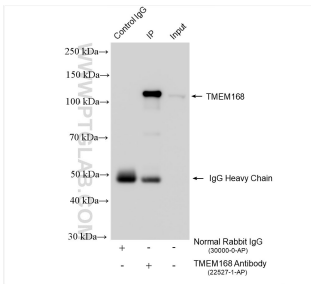
Various lysates were subjected to SDS PAGE followed by western blot with 22527-1-AP (TMEM168 antibody) at dilution of 1:2000 incubated at room temperature for 1.5 hours.



Immunohistochemical analysis of paraffin-embedded human testis slide using 22527-1-AP (TMEM168 Antibody) at dilution of 1:50.



Immunohistochemical analysis of paraffin-embedded human testis slide using 22527-1-AP (TMEM168 Antibody) at dilution of 1:50.



IP result of anti-TMEM168 (IP:22527-1-AP, 4ug; Detection:22527-1-AP 1:3000) with mouse brain tissue lysate 2120 ug.