

For Research Use Only

ABHD10 Polyclonal antibody

Catalog Number: 22558-1-AP

Featured Product



Basic Information

Catalog Number:

22558-1-AP

Size:

150ul , Concentration: 450 ug/ml by Nanodrop;

Source:

Rabbit

Isotype:

IgG

Immunogen Catalog Number:

AG18413

GenBank Accession Number:

BC014516

GeneID (NCBI):

55347

UNIPROT ID:

Q9NUJ1

Full Name:

abhydrolase domain containing 10

Calculated MW:

306 aa, 34 kDa

Observed MW:

28 kDa

Purification Method:

Antigen affinity purification

Recommended Dilutions:

WB 1:500-1:3000

Applications

Tested Applications:

WB, ELISA

Species Specificity:

human

Positive Controls:

WB : Y79 cells, HeLa cells

Background Information

ABHD10 is a mitochondrial protein that is a member of the APT family. It has 3 isoforms and regulates the S-palmitoylation status of the nucleophilic active site residue of peroxiredoxin-5 (PRDX5) (PMID: 31740833).

Storage

Storage:

Store at -20°C. Stable for one year after shipment.

Storage Buffer:

PBS with 0.02% sodium azide and 50% glycerol pH 7.3.

Aliquoting is unnecessary for -20°C storage

*** 20ul sizes contain 0.1% BSA

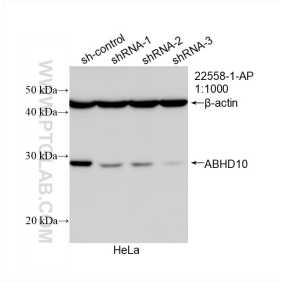
For technical support and original validation data for this product please contact:

T: 1 (888) 4PTGLAB (1-888-478-4522) (toll free in USA), or 1(312) 455-8498 (outside USA)

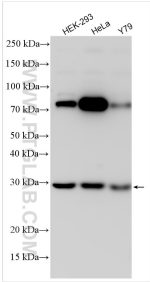
E: proteintech@ptglab.com
W: ptglab.com

This product is exclusively available under Proteintech Group brand and is not available to purchase from any other manufacturer.

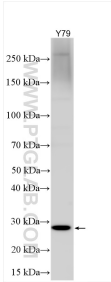
Selected Validation Data



WB result of ABHD10 antibody (22558-1-AP; 1:1000; incubated at room temperature for 1.5 hours) with sh-Control and sh-ABHD10 transfected HeLa cells.



Various lysates were subjected to SDS PAGE followed by western blot with 22558-1-AP (ABHD10 antibody) at dilution of 1:1500 incubated at room temperature for 1.5 hours.



Various lysates were subjected to SDS PAGE followed by western blot with 22558-1-AP (ABHD10 antibody) at dilution of 1:3000 incubated at room temperature for 1.5 hours.