

For Research Use Only

HEATR6 Polyclonal antibody, PBS Only

Catalog Number: 22560-1-PBS



Basic Information

Catalog Number:

22560-1-PBS

Size:

100ug, Concentration: 1 mg/ml by Nanodrop;

Source:

Rabbit

Isotype:

IgG

Immunogen Catalog Number:

AG18437

GenBank Accession Number:

BC119813

GeneID (NCBI):

63897

UNIPROT ID:

Q6A108

Full Name:

HEAT repeat containing 6

Calculated MW:

1181 aa, 129 kDa

Observed MW:

129 kDa

Purification Method:

Antigen Affinity purified

Applications

Tested Applications:

WB, IP, Indirect ELISA

Species Specificity:

human

Background Information

HEAT repeat-containing protein 6 (HEATR6) is amplified in certain breast cancer cell lines, such as MCF-7 and BT-474, suggesting its role in cancer progression. Additionally, HEATR6 is implicated in the regulation of gene expression, particularly in the context of long non-coding RNAs (lncRNAs) associated with breast cancer (PMID: 30953646).

Storage

Storage:

Store at -80°C.

Storage Buffer:

PBS only, pH7.3

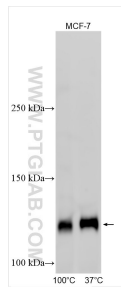
For technical support and original validation data for this product please contact:

T: 1 (888) 4PTGLAB (1-888-478-4522) (toll free in USA), or 1(312) 455-8498 (outside USA)

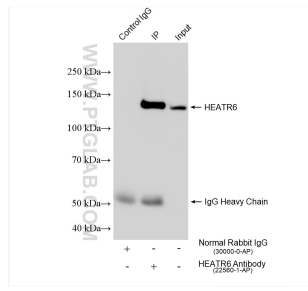
E: proteintech@ptglab.com
W: ptglab.com

This product is exclusively available under Proteintech Group brand and is not available to purchase from any other manufacturer.

Selected Validation Data



MCF-7 cells lysate was subjected to SDS PAGE followed by western blot with 22560-1-AP (HEATR6 antibody) at dilution of 1:1500 incubated at room temperature for 1.5 hours. This data was developed using the same antibody clone with 22560-1-PBS in a different storage buffer formulation.



IP result of anti-HEATR6 (IP:22560-1-AP, 4 ug; Detection:22560-1-AP 1:1000) with MCF-7 cells lysate 1520 ug. This data was developed using the same antibody clone with 22560-1-PBS in a different storage buffer formulation.