

For Research Use Only

# SEMA6B Polyclonal antibody, PBS Only

Catalog Number: 22571-1-PBS



## Basic Information

**Catalog Number:**

22571-1-PBS

**Size:**

100ug, Concentration: 1 mg/ml by Nanodrop;

**Source:**

Rabbit

**Isotype:**

IgG

**Immunogen Catalog Number:**

AG16707

**GenBank Accession Number:**

BC142617

**GeneID (NCBI):**

10501

**UNIPROT ID:**

Q9H3T3

**Full Name:**

sema domain, transmembrane domain (TM), and cytoplasmic domain, (semaphorin) 6B

**Calculated MW:**

95, 74 kDa

**Observed MW:**

70 kDa

**Purification Method:**

Antigen Affinity purified

## Applications

**Tested Applications:**

WB, Indirect ELISA

**Species Specificity:**

human, mouse

## Background Information

Semaphorins (SEMA) play critical roles in inflammation, angiogenesis, apoptosis, fibrosis, bone remodeling, and cell invasion. SEMA6B, the sixth member of the SEMA family, has shown significant correlations with the stage of liver fibrosis in hepatitis C virus-infected patients. SEMA6B is also involved in inflammatory responses and serves as a biomarker for macrophage-specific genes. Additionally, the level of SEMA6B in circulating monocytes has predictive value for cardiovascular disease. Also, SEMA6B can be a valuable biomarker for diagnosing HBV-ACLF12 (PMID: 39267780).

## Storage

**Storage:**

Store at -80°C.

**Storage Buffer:**

PBS only, pH7.3

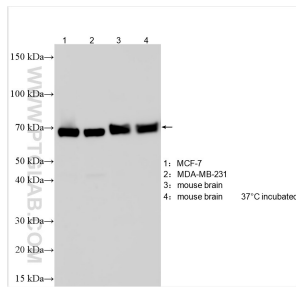
For technical support and original validation data for this product please contact:

T: 1 (888) 4PTGLAB (1-888-478-4522) (toll free in USA), or 1(312) 455-8498 (outside USA)

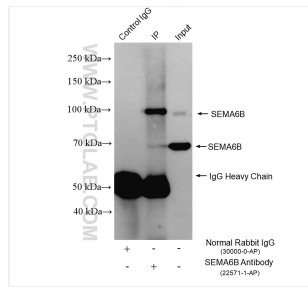
E: [proteintech@ptglab.com](mailto:proteintech@ptglab.com)  
W: [ptglab.com](http://ptglab.com)

**This product is exclusively available under Proteintech Group brand and is not available to purchase from any other manufacturer.**

## Selected Validation Data



Various lysates were subjected to SDS PAGE followed by western blot with 22571-1-AP (SEMA6B antibody) at dilution of 1:1000 incubated at room temperature for 1.5 hours. This data was developed using the same antibody clone with 22571-1-PBS in a different storage buffer formulation.



IP result of anti-SEMA6B (IP:22571-1-AP, 4ug; Detection:22571-1-AP 1:1000) with mouse brain tissue lysate 1120 ug. This data was developed using the same antibody clone with 22571-1-PBS in a different storage buffer formulation.