

For Research Use Only

WBP2NL Polyclonal antibody

Catalog Number: 22587-1-AP

10 Publications



Basic Information

Catalog Number:

22587-1-AP

Size:

150ul, Concentration: 500 ug/ml by Nanodrop and 267 ug/ml by Bradford method using BSA as the standard;

Source:

Rabbit

Isotype:

IgG

Immunogen Catalog Number:

AG18347

GenBank Accession Number:

BC022546

GeneID (NCBI):

164684

UNIPROT ID:

Q6ICG8

Full Name:

WBP2 N-terminal like

Calculated MW:

309 aa, 32 kDa

Observed MW:

32 kDa

Purification Method:

Antigen affinity purification

Recommended Dilutions:

WB 1:500-1:1000

IHC 1:20-1:200

Applications

Tested Applications:

WB, IHC, ELISA

Cited Applications:

WB, IF

Species Specificity:

human, mouse

Cited Species:

human, mouse

Note-IHC: suggested antigen retrieval with TE buffer pH 9.0; (*) Alternatively, antigen retrieval may be performed with citrate buffer pH 6.0

Positive Controls:

WB : mouse testis tissue,

IHC : human testis tissue,

Notable Publications

Author	Pubmed ID	Journal	Application
Nahid Azad	28954204	Bosn J Basic Med Sci	
Jaromír Vašíček	35682598	Int J Mol Sci	WB,IF
Xueguang Zhang	35296684	Nat Commun	WB,IF

Storage

Storage:

Store at -20°C. Stable for one year after shipment.

Storage Buffer:

PBS with 0.02% sodium azide and 50% glycerol pH 7.3.

Aliquoting is unnecessary for -20°C storage

*** 20ul sizes contain 0.1% BSA

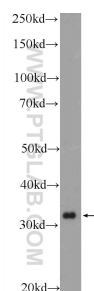
For technical support and original validation data for this product please contact:

T: 1 (888) 4PTGLAB (1-888-478-4522) (toll free in USA), or 1(312) 455-8498 (outside USA)

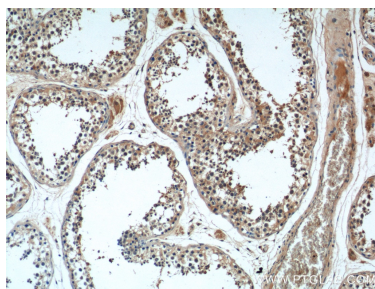
E: proteintech@ptglab.com
W: ptglab.com

This product is exclusively available under Proteintech Group brand and is not available to purchase from any other manufacturer.

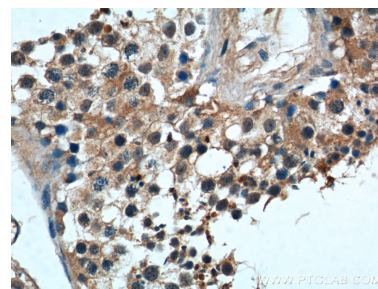
Selected Validation Data



mouse testis tissue were subjected to SDS PAGE followed by western blot with 22587-1-AP (WBP2NL Antibody) at dilution of 1:600 incubated at room temperature for 1.5 hours.



Immunohistochemical analysis of paraffin-embedded human testis tissue slide using 22587-1-AP (WBP2NL Antibody) at dilution of 1:50 (under 10x lens).



Immunohistochemical analysis of paraffin-embedded human testis tissue slide using 22587-1-AP (WBP2NL Antibody) at dilution of 1:50 (under 40x lens).