

For Research Use Only

PRICKLE1 Polyclonal antibody

Catalog Number: 22589-1-AP

Featured Product

6 Publications



Basic Information

Catalog Number:

22589-1-AP

Size:

150ul, Concentration: 1000 µg/ml by Nanodrop;

Source:

Rabbit

Isotype:

IgG

Immunogen Catalog Number:

AG18407

GenBank Accession Number:

BC114939

GeneID (NCBI):

144165

UNIPROT ID:

Q96MT3

Full Name:

prickle homolog 1 (Drosophila)

Calculated MW:

831 aa, 94 kDa

Observed MW:

94 kDa, 55-60 kDa

Purification Method:

Antigen Affinity purified

Recommended Dilutions:

WB 1:500-1:2000

IP 0.5-4.0 µg for 1.0-3.0 mg of total protein lysate

IF 1:50-1:500

Applications

Tested Applications:

WB, IP, IF, FC, ELISA

Cited Applications:

WB, IF

Species Specificity:

human, mouse

Cited Species:

human, chicken, mouse

Positive Controls:

WB : mouse brain tissue, Neuro-2a cells

IP : mouse brain tissue,

IF : mouse cerebellum tissue,

Background Information

PRICKLE1, also known as RILP, EPM1B, encodes a cytoplasmic protein with an N-terminal PET (Pk, Espinas, Testin) domain, three LIM domains and a C-terminal PKH (prickle homologous) domain. PRICKLE1 is expressed at the highest levels in placenta and lower levels in lung, liver, kidney and pancreas (PMID: 12525887). PRICKLE1 localizes to the nuclear membrane and has been implicated in the nuclear trafficking of the transcription repressors REST/NRSF and REST4. Mutations in PRICKLE1 have been linked to progressive myoclonus epilepsy (PMID: 18976727).

Notable Publications

Author	Pubmed ID	Journal	Application
Yue Ban	34597683	Exp Neurol	WB
Yue Ban	34613779	Sci Adv	WB
Duanfeng Jiang	34001134	J Transl Med	WB

Storage

Storage:

Store at -20°C. Stable for one year after shipment.

Storage Buffer:

PBS with 0.02% sodium azide and 50% glycerol pH 7.3.

Aliquoting is unnecessary for -20°C storage

*** 20ul sizes contain 0.1% BSA

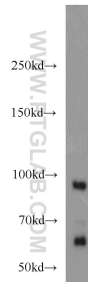
For technical support and original validation data for this product please contact:

T: 1 (888) 4PTGLAB (1-888-478-4522) (toll free in USA), or 1(312) 455-8498 (outside USA)

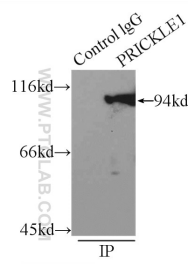
E: proteintech@ptglab.com
W: ptglab.com

This product is exclusively available under Proteintech Group brand and is not available to purchase from any other manufacturer.

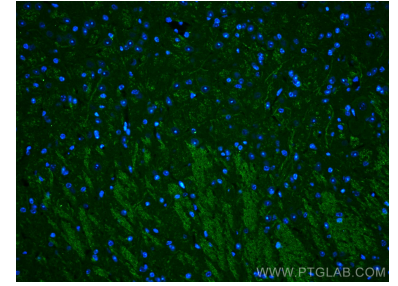
Selected Validation Data



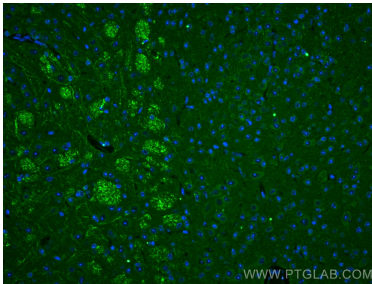
mouse brain tissue were subjected to SDS PAGE followed by western blot with 22589-1-AP (PRICKLE1 antibody) at dilution of 1:1000 incubated at room temperature for 1.5 hours.



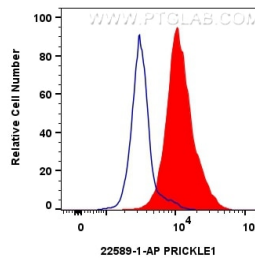
IP result of anti-PRICKLE1 (IP:22589-1-AP, 3ug; Detection:22589-1-AP 1:1000) with mouse brain tissue lysate 7000ug.



Immunofluorescent analysis of (4% PFA) fixed mouse cerebellum tissue using PRICKLE1 antibody (22589-1-AP) at dilution of 1:200 and CoraLite®488-Conjugated AffiniPure Goat Anti-Rabbit IgG(H+L).



Immunofluorescent analysis of (4% PFA) fixed mouse cerebellum tissue using PRICKLE1 antibody (22589-1-AP) at dilution of 1:200 and CoraLite®488-Conjugated AffiniPure Goat Anti-Rabbit IgG(H+L).



1×10^6 HeLa cells were intracellularly stained with 0.8 ug Anti-Human PRICKLE1 (22589-1-AP)(red), or 0.8 ug Rabbit IgG control Rabbit PolyAb (30000-0-AP) (blue). Cells were fixed and permeabilized with Transcription Factor Staining Buffer Kit (PF00011).