

For Research Use Only

PRICKLE1 Polyclonal antibody, PBS Only

Catalog Number: 22589-1-PBS

Featured Product



Basic Information

Catalog Number:

22589-1-PBS

Size:

100ug, Concentration: 1 mg/ml by Nanodrop;

Source:

Rabbit

Isotype:

IgG

Immunogen Catalog Number:

AG18407

GenBank Accession Number:

BC114939

GeneID (NCBI):

144165

UNIPROT ID:

Q96MT3

Full Name:

prickle homolog 1 (Drosophila)

Calculated MW:

831 aa, 94 kDa

Observed MW:

94 kDa, 55-60 kDa

Purification Method:

Antigen Affinity purified

Applications

Tested Applications:

WB, IHC, IF-P, FC (Intra), IP, Indirect ELISA

Species Specificity:

human, mouse

Background Information

PRICKLE1, also known as RILP, EPM1B, encodes a cytoplasmic protein with an N-terminal PET (Pk, Espinas, Testin) domain, three LIM domains and a C-terminal PKH (prickle homologous) domain. PRICKLE1 is expressed at the highest levels in placenta and lower levels in lung, liver, kidney and pancreas (PMID: 12525887). PRICKLE1 localizes to the nuclear membrane and has been implicated in the nuclear trafficking of the transcription repressors REST/NRSF and REST4. Mutations in PRICKLE1 have been linked to progressive myoclonus epilepsy (PMID: 18976727).

Storage

Storage:

Store at -80°C.

Storage Buffer:

PBS Only

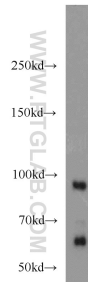
For technical support and original validation data for this product please contact:

T: 1 (888) 4PTGLAB (1-888-478-4522) (toll free in USA), or 1(312) 455-8498 (outside USA)

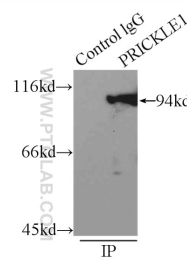
E: proteintech@ptglab.com
W: ptglab.com

This product is exclusively available under Proteintech Group brand and is not available to purchase from any other manufacturer.

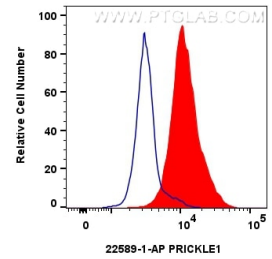
Selected Validation Data



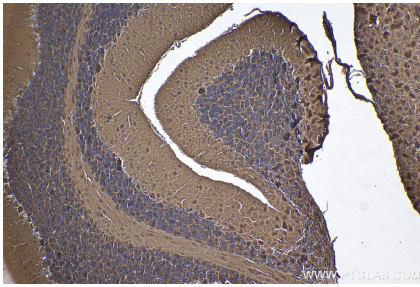
mouse brain tissue were subjected to SDS PAGE followed by western blot with 22589-1-AP (PRICKLE1 antibody) at dilution of 1:1000 incubated at room temperature for 1.5 hours. This data was developed using the same antibody clone with 22589-1-PBS in a different storage buffer formulation.



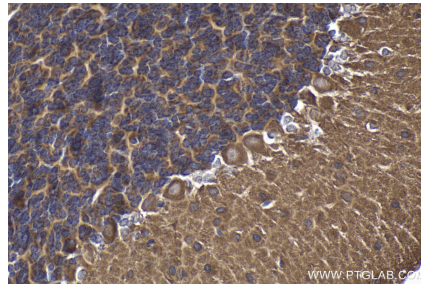
IP result of anti-PRICKLE1 (IP:22589-1-AP, 3ug; Detection:22589-1-AP 1:1000) with mouse brain tissue lysate 7000ug. This data was developed using the same antibody clone with 22589-1-PBS in a different storage buffer formulation.



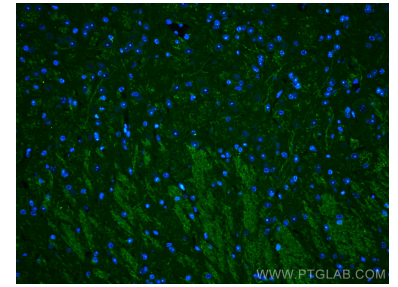
1×10^6 HeLa cells were intracellularly stained with 0.8 ug Anti-Human PRICKLE1 (22589-1-AP)(red), or 0.8 ug Rabbit IgG control Rabbit PolyAb (30000-0-AP) (blue). Cells were fixed and permeabilized with Transcription Factor Staining Buffer Kit (PF00011). This data was developed using the same antibody clone with 22589-1-PBS in a different storage buffer formulation.



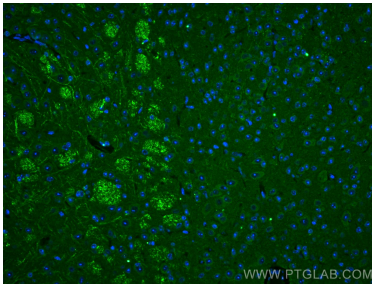
Immunohistochemical analysis of paraffin-embedded mouse cerebellum tissue slide using 22589-1-AP (PRICKLE1 antibody) at dilution of 1:500 (under 10x lens). Heat mediated antigen retrieval with Tris-EDTA buffer (pH 9.0). This data was developed using the same antibody clone with 22589-1-PBS in a different storage buffer formulation.



Immunohistochemical analysis of paraffin-embedded mouse cerebellum tissue slide using 22589-1-AP (PRICKLE1 antibody) at dilution of 1:500 (under 40x lens). Heat mediated antigen retrieval with Tris-EDTA buffer (pH 9.0). This data was developed using the same antibody clone with 22589-1-PBS in a different storage buffer formulation.



Immunofluorescent analysis of (4% PFA) fixed mouse cerebellum tissue using PRICKLE1 antibody (22589-1-AP) at dilution of 1:200 and CoraLite@488-Conjugated AffiniPure Goat Anti-Rabbit IgG(H+L). This data was developed using the same antibody clone with 22589-1-PBS in a different storage buffer formulation.



Immunofluorescent analysis of (4% PFA) fixed mouse cerebellum tissue using PRICKLE1 antibody (22589-1-AP) at dilution of 1:200 and CoraLite@488-Conjugated AffiniPure Goat Anti-Rabbit IgG(H+L). This data was developed using the same antibody clone with 22589-1-PBS in a different storage buffer formulation.