

For Research Use Only

SORLA Polyclonal antibody

Catalog Number: 22592-1-AP

Featured Product

4 Publications



Basic Information

Catalog Number:

22592-1-AP

Size:

150ul, Concentration: 500 ug/ml by Nanodrop;

Source:

Rabbit

Isotype:

IgG

Immunogen Catalog Number:

AG18445

GenBank Accession Number:

BC137171

GeneID (NCBI):

6653

UNIPROT ID:

Q92673

Full Name:

sortilin-related receptor, L(DLR class)
A repeats-containing

Calculated MW:

2214 aa, 248 kDa

Observed MW:

300 kDa

Purification Method:

Antigen Affinity purified

Recommended Dilutions:

WB 1:500-1:1000

IP 0.5-4.0 ug for 1.0-3.0 mg of total protein lysate

IHC 1:50-1:500

IF-P 1:50-1:500

Applications

Tested Applications:

WB, IHC, IF-P, IP, ELISA

Cited Applications:

WB, IHC, IF, IP, CoIP

Species Specificity:

human, mouse, rat

Cited Species:

human, mouse, rat

Positive Controls:

WB : mouse brain tissue,

IP : mouse brain tissue,

IHC : mouse brain tissue, human brain tissue, rat brain tissue

IF-P : mouse cerebellum tissue,

Note-IHC: suggested antigen retrieval with TE buffer pH 9.0; (*) Alternatively, antigen retrieval may be performed with citrate buffer pH 6.0

Background Information

SorLA also known as SorL1 or LR11, is a multiligand receptor belonging to the LDL receptor superfamily. It is also a member of vacuolar protein sorting-10 (Vps10) family and is enriched in the brain. SorLA acts as a sorting receptor for APP and prevents amyloidogenic processing of APP. Downregulation of SorLA has been found in patients with sporadic Alzheimer disease (AD). Currently SorLA has emerged as a potential target for AD therapy. (25404298)

Notable Publications

Author	Pubmed ID	Journal	Application
Chenlu Xu	36113572	Environ Res	WB
Yunjia Chen	25404298	Proc Natl Acad Sci U S A	WB, IP
Yajie Wang	39225620	Adv Sci (Weinh)	WB, IF

Storage

Storage:

Store at -20°C. Stable for one year after shipment.

Storage Buffer:

PBS with 0.02% sodium azide and 50% glycerol pH 7.3.

Aliquoting is unnecessary for -20°C storage

*** 20ul sizes contain 0.1% BSA

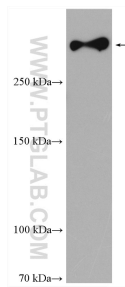
For technical support and original validation data for this product please contact:

T: 1 (888) 4PTGLAB (1-888-478-4522) (toll free in USA), or 1(312) 455-8498 (outside USA)

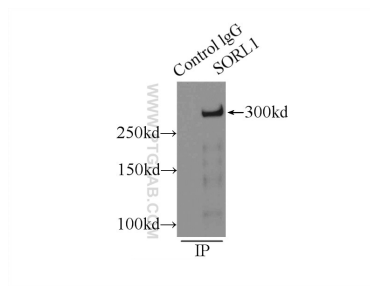
E: proteintech@ptglab.com
W: ptglab.com

This product is exclusively available under Proteintech Group brand and is not available to purchase from any other manufacturer.

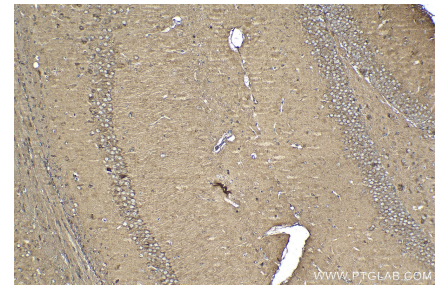
Selected Validation Data



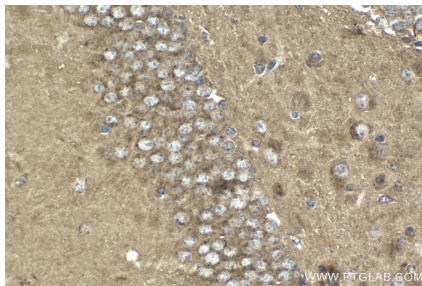
mouse brain tissue were subjected to SDS PAGE followed by western blot with 22592-1-AP (SORLA antibody) at dilution of 1:500 incubated at room temperature for 1.5 hours.



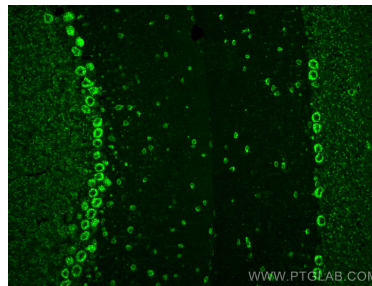
IP result of anti-SORLA (IP:22592-1-AP, 5ug; Detection:22592-1-AP 1:500) with mouse brain tissue lysate 10000ug.



Immunohistochemical analysis of paraffin-embedded mouse brain tissue slide using 22592-1-AP (SORLA antibody) at dilution of 1:200 (under 10x lens). Heat mediated antigen retrieval with Tris-EDTA buffer (pH 9.0).



Immunohistochemical analysis of paraffin-embedded mouse brain tissue slide using 22592-1-AP (SORLA antibody) at dilution of 1:200 (under 40x lens). Heat mediated antigen retrieval with Tris-EDTA buffer (pH 9.0).



Immunofluorescent analysis of (4% PFA) fixed paraffin-embedded mouse cerebellum tissue using SORLA antibody (22592-1-AP) at dilution of 1:200 and CoraLite®488-Conjugated AffiniPure Goat Anti-Rabbit IgG(H+L) (SA00013-2). Heat mediated antigen retrieval with Tris-EDTA buffer (pH 9.0).