

For Research Use Only

CCAR2 Polyclonal antibody

Catalog Number: 22638-1-AP

5 Publications



Basic Information

Catalog Number:

22638-1-AP

Size:

150ul, Concentration: 1000 ug/ml by Nanodrop and 440 ug/ml by Bradford method using BSA as the standard;

Source:

Rabbit

Isotype:

IgG

Immunogen Catalog Number:

AG18374

GenBank Accession Number:

BC018269

GeneID (NCBI):

57805

UNIPROT ID:

Q8N163

Full Name:

KIAA1967

Calculated MW:

923 aa, 103 kDa

Observed MW:

130 kDa

Purification Method:

Antigen affinity purification

Recommended Dilutions:

WB 1:2000-1:16000

IP 0.5-4.0 ug for 1.0-3.0 mg of total protein lysate

IHC 1:8000-1:32000

IF/ICC 1:20-1:200

Applications

Tested Applications:

WB, IHC, IF/ICC, IP, ELISA

Cited Applications:

WB, IHC, IF, IP, CoIP, RIP

Species Specificity:

human, mouse, rat

Cited Species:

human, mouse

Note-IHC: suggested antigen retrieval with TE buffer pH 9.0; (*) Alternatively, antigen retrieval may be performed with citrate buffer pH 6.0

Positive Controls:

WB: HEK-293 cells, HeLa cells, MCF-7 cells, mouse brain tissue, rat brain tissue

IP: mouse brain tissue,

IHC: human colon cancer tissue, human breast cancer tissue, human pancreas cancer tissue

IF/ICC: HepG2 cells,

Notable Publications

Author	Pubmed ID	Journal	Application
Ruibing Chen	33751109	Nucleic Acids Res	CoIP, RIP
Farshad Niri	34197713	Biochem Cell Biol	WB, IF
Qiangqiang Liu	35913115	Elife	WB, IHC, IP

Storage

Storage:

Store at -20°C. Stable for one year after shipment.

Storage Buffer:

PBS with 0.02% sodium azide and 50% glycerol pH 7.3.

Aliquoting is unnecessary for -20°C storage

*** 20ul sizes contain 0.1% BSA

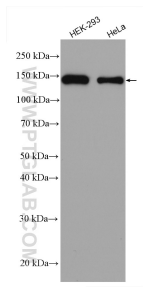
For technical support and original validation data for this product please contact:

T: 1 (888) 4PTGLAB (1-888-478-4522) (toll free in USA), or 1(312) 455-8498 (outside USA)

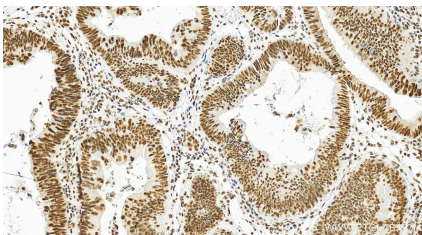
E: proteintech@ptglab.com
W: ptglab.com

This product is exclusively available under Proteintech Group brand and is not available to purchase from any other manufacturer.

Selected Validation Data



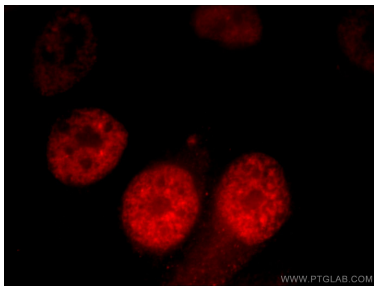
Various lysates were subjected to SDS PAGE followed by western blot with 22638-1-AP (CCAR2 antibody) at dilution of 1:8000 incubated at room temperature for 1.5 hours.



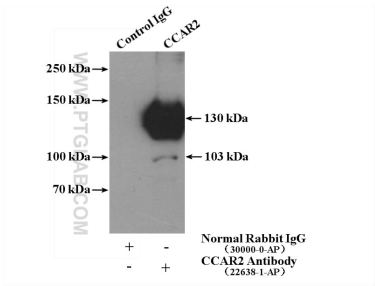
Immunohistochemical analysis of paraffin-embedded human colon cancer tissue slide using 22638-1-AP (CCAR2 antibody) at dilution of 1:16000 (under 20x lens). Heat mediated antigen retrieval with Tris-EDTA buffer (pH 9.0).



Immunohistochemical analysis of paraffin-embedded human colon cancer tissue slide using 22638-1-AP (CCAR2 antibody) at dilution of 1:16000 (under 20x lens). Heat mediated antigen retrieval with Tris-EDTA buffer (pH 9.0).



Immunofluorescent analysis of HepG2 cells, using KIAA1967 antibody 22638-1-AP at 1:50 dilution and Rhodamine-labeled goat anti-rabbit IgG (red).



IP result of anti-CCAR2 (IP:22638-1-AP, 4ug; Detection:22638-1-AP 1:1000) with mouse brain tissue lysate 4000ug.