

For Research Use Only

ATOX1 Polyclonal antibody

Catalog Number: 22641-1-AP

3 Publications



Basic Information

Catalog Number: 22641-1-AP	GenBank Accession Number: BC112248	Purification Method: Antigen affinity purification
Size: 150ul , Concentration: 550 ug/ml by Nanodrop;	GeneID (NCBI): 475	Recommended Dilutions: WB 1:500-1:2000
Source: Rabbit	UNIPROT ID: O00244	IHC 1:50-1:500
Isotype: IgG	Full Name: ATX1 antioxidant protein 1 homolog (yeast)	IF/ICC 1:50-1:500
Immunogen Catalog Number: AG18460	Calculated MW: 68 aa, 8 kDa	
	Observed MW: 7 kDa	

Applications

Tested Applications: WB, IHC, IF/ICC, ELISA	Positive Controls:
Cited Applications: WB, IF	WB : A375 cells, A549 cells, HEK-293T cells, NCI-H1299 cells, HEK-293 cells
Species Specificity: human	IHC : human liver cancer tissue,
Cited Species: mouse	IF/ICC : PC-3 cells,
Note-IHC: suggested antigen retrieval with TE buffer pH 9.0; (*) Alternatively, antigen retrieval may be performed with citrate buffer pH 6.0	

Background Information

Antioxidant 1 (ATOX1) is a copper chaperone to regulate copper homeostasis in cell. In the cytosol, ATOX1 always binds to copper and transfer to ATPase proteins in the trans-Golgi network, thereby promoting copper supply to various copper-dependent oxidoreductases matured within the secretory vesicles (PMID: 28294521). Also, the protein could protect cells against oxidative damage and the expression levels of ATOX1 may help to the inflammatory response and antioxidant defense, even to modulate response to the cancer (PMID: 27472369). ATOX1 plays an important role in the physiology of the human central nervous system, and it's highly expressed in the cerebral cortex and hippocampus (PMID: 30545441). Either cytosol or nucleus location of ATOX1 has been reported in different literatures, which may be associated with cell status (PMID: 24445997; 31317143).

Notable Publications

Author	Pubmed ID	Journal	Application
Daxi Sun	39252079	J Nanobiotechnology	WB
Pengzhan Zhao	38640584	Redox Biol	WB, IF
Jinsong Wei	37456842	iScience	WB

Storage

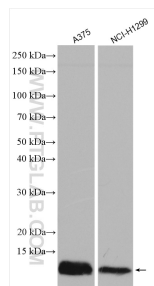
Storage:
Store at -20°C. Stable for one year after shipment.
Storage Buffer:
PBS with 0.02% sodium azide and 50% glycerol pH 7.3.
Aliquoting is unnecessary for -20°C storage

*** 20ul sizes contain 0.1% BSA

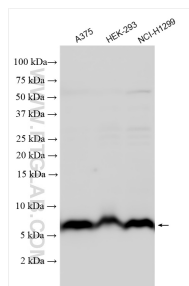
For technical support and original validation data for this product please contact:
T: 1 (888) 4PTGLAB (1-888-478-4522) (toll free in USA), or 1(312) 455-8498 (outside USA)
E: proteintech@ptglab.com
W: ptglab.com

This product is exclusively available under Proteintech Group brand and is not available to purchase from any other manufacturer.

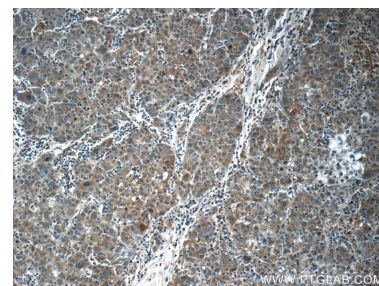
Selected Validation Data



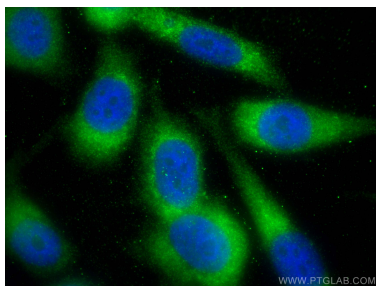
Various lysates were subjected to SDS PAGE followed by western blot with 22641-1-AP (ATOX1 antibody) at dilution of 1:1000 incubated at room temperature for 1.5 hours.



Various lysates were subjected to SDS PAGE followed by western blot with 22641-1-AP (ATOX1 antibody) at dilution of 1:600 incubated at room temperature for 1.5 hours.



Immunohistochemical analysis of paraffin-embedded human liver cancer tissue slide using 22641-1-AP (ATOX1 Antibody) at dilution of 1:50 (under 10x lens).



Immunofluorescent analysis of (-20°C Ethanol) fixed PC-3 cells using ATOX1 antibody (22641-1-AP) at dilution of 1:200 and Multi-rAb CoraLite® Plus 488-Goat Anti-Rabbit Recombinant Secondary Antibody (H+L) (RGAR002).