

For Research Use Only

# CSN1S1 Polyclonal antibody

Catalog Number: 22648-1-AP **1 Publications**



## Basic Information

<b>Catalog Number:</b> 22648-1-AP	<b>GenBank Accession Number:</b> BC128227	<b>Purification Method:</b> Antigen affinity purification
<b>Size:</b> 150ul, Concentration: 900 ug/ml by Nanodrop and 400 ug/ml by Bradford method using BSA as the standard;	<b>GeneID (NCBI):</b> 1446	<b>Recommended Dilutions:</b> WB 1:5000-1:50000
<b>Source:</b> Rabbit	<b>UNIPROT ID:</b> P47710	
<b>Isotype:</b> IgG	<b>Full Name:</b> casein alpha s1	
<b>Immunogen Catalog Number:</b> AG18529	<b>Calculated MW:</b> 185 aa, 22 kDa	
	<b>Observed MW:</b> 21-24 kDa	

## Applications

<b>Tested Applications:</b> WB, ELISA	<b>Positive Controls:</b> WB : human milk,
<b>Cited Applications:</b> WB	
<b>Species Specificity:</b> human	
<b>Cited Species:</b> human	

## Notable Publications

Author	Pubmed ID	Journal	Application
Suhua Chen	35565755	Nutrients	WB

## Storage

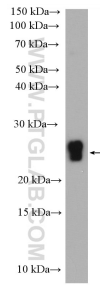
**Storage:**  
Store at -20°C. Stable for one year after shipment.  
**Storage Buffer:**  
PBS with 0.02% sodium azide and 50% glycerol pH 7.3.  
Aliquoting is unnecessary for -20°C storage

**\*\*\* 20ul sizes contain 0.1% BSA**

For technical support and original validation data for this product please contact:  
T: 1 (888) 4PTGLAB (1-888-478-4522) (toll free in USA), or 1(312) 455-8498 (outside USA)  
E: proteintech@ptglab.com  
W: ptglab.com

This product is exclusively available under Proteintech Group brand and is not available to purchase from any other manufacturer.

## Selected Validation Data



human milk were subjected to SDS PAGE followed by western blot with 22648-1-AP (CSN1S1 antibody) at dilution of 1:20000 incubated at room temperature for 1.5 hours.