

For Research Use Only

SLC30A1 Polyclonal antibody

Catalog Number: 22661-1-AP

1 Publications



Basic Information

Catalog Number:

22661-1-AP

Size:

150ul, Concentration: 350 ug/ml by Nanodrop;

Source:

Rabbit

Isotype:

IgG

Immunogen Catalog Number:

AG18567

GenBank Accession Number:

BC121015

GeneID (NCBI):

7779

UNIPROT ID:

Q9Y6M5

Full Name:

solute carrier family 30 (zinc transporter), member 1

Calculated MW:

507 aa, 55 kDa

Observed MW:

63~75 kDa

Purification Method:

Antigen affinity purification

Recommended Dilutions:

WB 1:5000-1:50000

Applications

Tested Applications:

WB, ELISA

Cited Applications:

IHC

Species Specificity:

human

Cited Species:

human

Positive Controls:

WB : HeLa cells, HeLa membrane protein, HepG2 total crude protein, HepG2 membrane protein

Background Information

Zinc transporter 1 (ZNT1), also known as SLC30A1, is the only zinc transporter predominantly located on the plasma membrane, where it plays a pivotal role exporting cytosolic zinc to the extracellular space. SLC30A1 expression is posttranslationally regulated by cellular zinc status and can be N-glycosylated on Asn299 in the extracellular loop between transmembrane domains (PMID: 15451416, 18936201). ZNT1 is located in the plasma membrane and is responsible for Zn export from the cytosol to the extracellular space during periods of elevated cytosolic Zn. Western analysis detected a higher band at 63 kDa than the expected molecular mass, which could be attributed to the properties of the cytosolic histidine-rich loop (PMID: 31471319, 15753530).

Notable Publications

Author	Pubmed ID	Journal	Application
Li Niu	33908744	Eur J Histochem	IHC

Storage

Storage:

Store at -20°C. Stable for one year after shipment.

Storage Buffer:

PBS with 0.02% sodium azide and 50% glycerol pH 7.3.

Aliquoting is unnecessary for -20°C storage

*** 20ul sizes contain 0.1%BSA

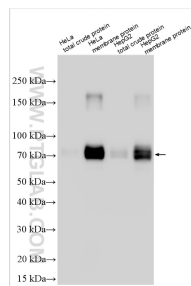
For technical support and original validation data for this product please contact:

T: 1 (888) 4PTGLAB (1-888-478-4522) (toll free in USA), or 1(312) 455-8498 (outside USA)

E: proteintech@ptglab.com
W: ptglab.com

This product is exclusively available under Proteintech Group brand and is not available to purchase from any other manufacturer.

Selected Validation Data



Various lysates were subjected to SDS PAGE followed by western blot with 22661-1-AP (SLC30A1 antibody) at dilution of 1:10000 incubated at room temperature for 1.5 hours.