

For Research Use Only

STARS/ABRA Polyclonal antibody

Catalog Number: 22673-1-AP **3 Publications**



Basic Information

Catalog Number: 22673-1-AP	GenBank Accession Number: BC105103	Purification Method: Antigen affinity purification
Size: 150ul , Concentration: 350 ug/ml by Nanodrop and 260 ug/ml by Bradford method using BSA as the standard;	GeneID (NCBI): 137735	Recommended Dilutions: WB 1:500-1:1000
Source: Rabbit	UNIPROT ID: Q8NoZ2	IHC 1:20-1:200
Isotype: IgG	Full Name: actin-binding Rho activating protein	IF/ICC 1:20-1:200
Immunogen Catalog Number: AG18456	Calculated MW: 381 aa, 43 kDa	
	Observed MW: 45 kDa	

Applications

Tested Applications: WB, IHC, IF/ICC, ELISA	Positive Controls: WB : mouse heart tissue, human heart tissue
Cited Applications: WB, IF	IHC : human heart tissue,
Species Specificity: human, mouse	IF/ICC : HepG2 cells,
Cited Species: human, mouse	
Note-IHC: suggested antigen retrieval with TE buffer pH 9.0; (*) Alternatively, antigen retrieval may be performed with citrate buffer pH 6.0	

Notable Publications

Author	Pubmed ID	Journal	Application
Yexiang Chen	36368442	Behav Brain Res	WB
Meng Xia	31201155	Development	WB,IF
Jennifer A Tinklenberg	37419385	Am J Pathol	WB,IF

Storage

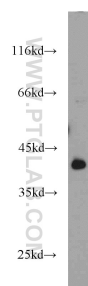
Storage:
Store at -20°C. Stable for one year after shipment.
Storage Buffer:
PBS with 0.02% sodium azide and 50% glycerol pH 7.3.
Aliquoting is unnecessary for -20°C storage

*** 20ul sizes contain 0.1% BSA

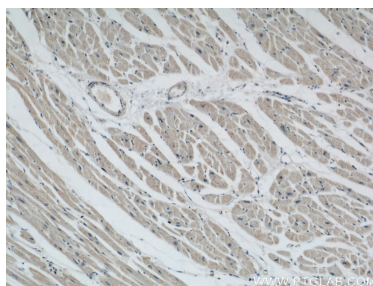
For technical support and original validation data for this product please contact:
T: 1 (888) 4PTGLAB (1-888-478-4522) (toll free in USA), or 1(312) 455-8498 (outside USA)
E: proteintech@ptglab.com
W: ptglab.com

This product is exclusively available under Proteintech Group brand and is not available to purchase from any other manufacturer.

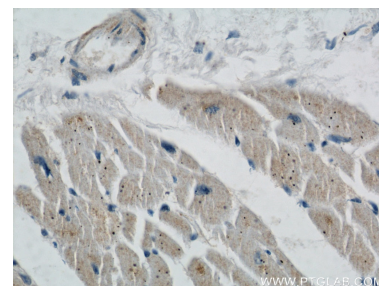
Selected Validation Data



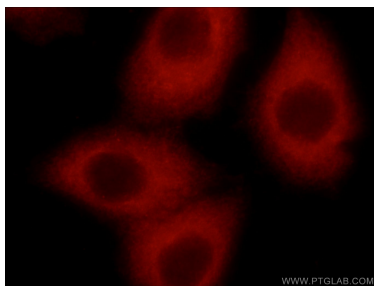
mouse heart tissue were subjected to SDS PAGE followed by western blot with 22673-1-AP (STARS/ABRA antibody) at dilution of 1:500 incubated at room temperature for 1.5 hours.



Immunohistochemical analysis of paraffin-embedded human heart using 22673-1-AP (STARS/ABRA antibody) at dilution of 1:50 (under 10x lens).



Immunohistochemical analysis of paraffin-embedded human heart using 22673-1-AP (STARS/ABRA antibody) at dilution of 1:50 (under 40x lens).



Immunofluorescent analysis of HepG2 cells using 22673-1-AP (STARS/ABRA antibody) at dilution of 1:50 and Rhodamine-labeled goat anti-rabbit IgG (red).