

For Research Use Only

PPP4R2 Polyclonal antibody

Catalog Number: 22676-1-AP



Basic Information

Catalog Number: 22676-1-AP	GenBank Accession Number: BC110889	Purification Method: Antigen affinity purification
Size: 150ul, Concentration: 500 µg/ml by Nanodrop and 367 µg/ml by Bradford method using BSA as the standard;	GeneID (NCBI): 151987	Recommended Dilutions: WB 1:500-1:2000 IP 0.5-4.0 ug for IP and 1:500-1:2000 for WB
Source: Rabbit	Full Name: protein phosphatase 4, regulatory subunit 2	IHC 1:20-1:200 IF 1:50-1:500
Isotype: IgG	Calculated MW: 360aa, 40 kDa; 495aa, 55 kDa	
Immunogen Catalog Number: AG18486	Observed MW: 65 kDa	

Applications

Tested Applications: IF, IHC, IP, WB, ELISA	Positive Controls:
Species Specificity: human	WB: A549 cells, HepG2 cells
Note-IHC: <i>suggested antigen retrieval with TE buffer pH 9.0; (*) Alternatively, antigen retrieval may be performed with citrate buffer pH 6.0</i>	IP: HepG2 cells,
	IHC: human liver cancer tissue, human pancreas tissue
	IF: HepG2 cells,

Background Information

PPP4R2 is a regulatory subunit of protein phosphatase-4 (PPP4), a protein serine/threonine phosphatase implicated in microtubule organization at centrosomes and DNA double-strand break repair. The deduced 453-amino acid protein contains several potential phosphorylation sites and has a calculated molecular mass of 50.4 kD. Immunofluorescent analysis of HeLa and A431 cells revealed prominent localization of PPP4R2 at centrosomes, with weaker staining of cytoplasm and nucleus (PMID: 10769191).

Storage

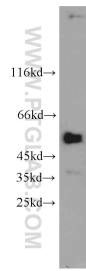
Storage:
Store at -20°C. Stable for one year after shipment.
Storage Buffer:
PBS with 0.02% sodium azide and 50% glycerol pH 7.3.
Aliquoting is unnecessary for -20°C storage

*** 20ul sizes contain 0.1% BSA

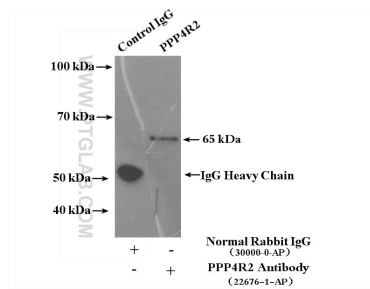
For technical support and original validation data for this product please contact:
T: 1 (888) 4PTGLAB (1-888-478-4522) (toll free in USA), or 1(312) 455-8498 (outside USA) E: proteintech@ptglab.com W: ptglab.com

This product is exclusively available under Proteintech Group brand and is not available to purchase from any other manufacturer.

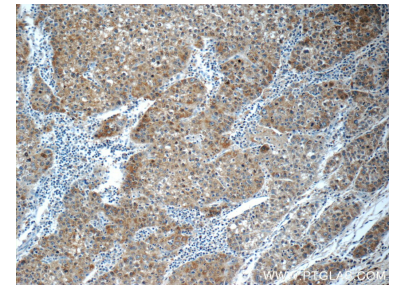
Selected Validation Data



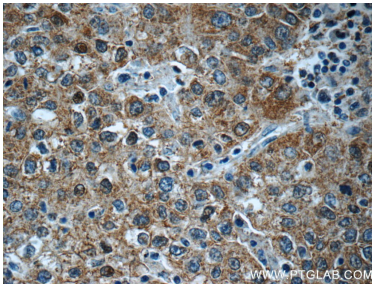
A549 cells were subjected to SDS PAGE followed by western blot with 22676-1-AP (PPP4R2 antibody) at dilution of 1:1000 incubated at room temperature for 1.5 hours.



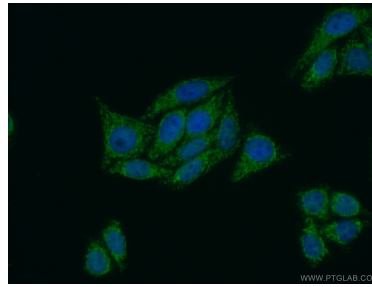
IP Result of anti-PPP4R2 (IP:22676-1-AP, 4ug; Detection:22676-1-AP 1:1000) with HepG2 cells lysate 3600ug.



Immunohistochemical analysis of paraffin-embedded human liver cancer tissue slide using 22676-1-AP (PPP4R2 Antibody) at dilution of 1:50 (under 10x lens).



Immunohistochemical analysis of paraffin-embedded human liver cancer tissue slide using 22676-1-AP (PPP4R2 Antibody) at dilution of 1:50 (under 40x lens).



Immunofluorescent analysis of (10% Formaldehyde) fixed HepG2 cells using 22676-1-AP (PPP4R2 antibody) at dilution of 1:50 and Alexa Fluor 488-conjugated AffiniPure Goat Anti-Rabbit IgG(H+L).