

For Research Use Only

# SLAMF6 Polyclonal antibody

Catalog Number: 22711-1-AP



## Basic Information

<b>Catalog Number:</b> 22711-1-AP	<b>GenBank Accession Number:</b> BC114495	<b>Purification Method:</b> Antigen affinity purification
<b>Size:</b> 150ul , Concentration: 1000 µg/ml by Nanodrop and 487 µg/ml by Bradford method using BSA as the standard;	<b>GeneID (NCBI):</b> 114836	<b>Recommended Dilutions:</b> WB 1:500-1:1000 IHC 1:50-1:500
<b>Source:</b> Rabbit	<b>Full Name:</b> SLAM family member 6	
<b>Isotype:</b> IgG	<b>Calculated MW:</b> 332 aa, 37 kDa	
<b>Immunogen Catalog Number:</b> AG18517	<b>Observed MW:</b> 60 kDa	

## Applications

<b>Tested Applications:</b> IHC, WB, ELISA	<b>Positive Controls:</b>
<b>Species Specificity:</b> human	<b>WB:</b> Daudi cells,
<b>Note-IHC:</b> <i>suggested antigen retrieval with TE buffer pH 9.0; (*) Alternatively, antigen retrieval may be performed with citrate buffer pH 6.0</i>	<b>IHC:</b> human colon cancer tissue, human tonsillitis tissue

## Background Information

### Storage

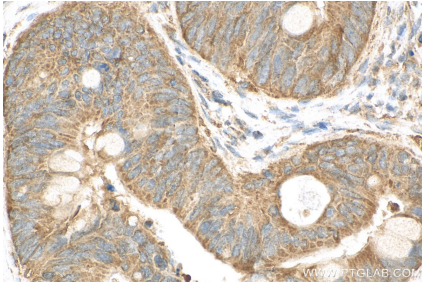
**Storage:**  
Store at -20°C. Stable for one year after shipment.  
**Storage Buffer:**  
PBS with 0.02% sodium azide and 50% glycerol pH 7.3.  
Aliquoting is unnecessary for -20°C storage

\*\*\* 20ul sizes contain 0.1% BSA

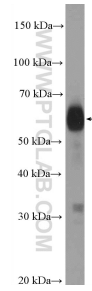
For technical support and original validation data for this product please contact:  
T: 1 (888) 4PTGLAB (1-888-478-4522) (toll free in USA), or 1(312) 455-8498 (outside USA)      E: proteintech@ptglab.com  
W: ptglab.com

This product is exclusively available under Proteintech Group brand and is not available to purchase from any other manufacturer.

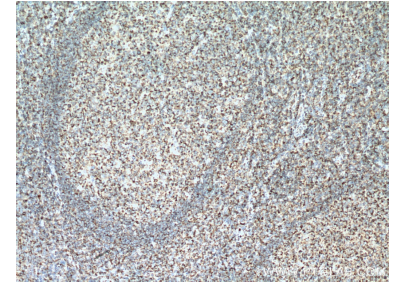
## Selected Validation Data



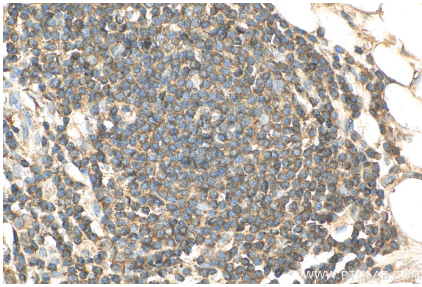
Immunohistochemical analysis of paraffin-embedded human colon cancer tissue slide using 22711-1-AP (SLAMF6 antibody) at dilution of 1:200 (under 40x lens). Heat mediated antigen retrieval with Tris-EDTA buffer (pH 9.0).



Daudi cells were subjected to SDS PAGE followed by western blot with 22711-1-AP (SLAMF6 Antibody) at dilution of 1:600 incubated at room temperature for 1.5 hours.



Immunohistochemical analysis of paraffin-embedded human tonsillitis tissue slide using 22711-1-AP (SLAMF6 Antibody) at dilution of 1:200 (under 10x lens). Heat mediated antigen retrieval with Tris-EDTA buffer (pH 9.0).



Immunohistochemical analysis of paraffin-embedded human colon cancer tissue slide using 22711-1-AP (SLAMF6 antibody) at dilution of 1:200 (under 40x lens). Heat mediated antigen retrieval with Tris-EDTA buffer (pH 9.0).