

For Research Use Only

WHSC1 Polyclonal antibody

Catalog Number: 22722-1-AP **1 Publications**



Basic Information

Catalog Number: 22722-1-AP	GenBank Accession Number: BC152412	Purification Method: Antigen Affinity purified
Size: 150ul, Concentration: 350 ug/ml by Nanodrop;	GeneID (NCBI): 7468	Recommended Dilutions: WB 1:500-1:2000 IP 0.5-4.0 ug for 1.0-3.0 mg of total protein lysate IHC 1:50-1:500
Source: Rabbit	UNIPROT ID: O96028	
Isotype: IgG	Full Name: Wolf-Hirschhorn syndrome candidate 1	
Immunogen Catalog Number: AG18611	Calculated MW: 162 kDa	
	Observed MW: 70 kDa, 150 kDa	

Applications

Tested Applications: WB, IP, IHC, ELISA	Positive Controls: WB : HCT 116 cells, IP : HeLa cells, IHC : human breast cancer tissue,
Cited Applications: WB	
Species Specificity: human	
Cited Species: human	

Note-IHC: suggested antigen retrieval with TE buffer pH 9.0; (*) Alternatively, antigen retrieval may be performed with citrate buffer pH 6.0

Background Information

WHSC1 (also known as MMSET or NSD2) is a SET domain containing histone lysine methyltransferase that can di- and trimethylate histone H3 at lysine 36 (H3K36). WHSC1 mRNA is highly expressed in embryonic tissues, especially those with high degrees of proliferation, whereas in adult tissues, the mRNA is primarily expressed in thymus and testis. WHSC1 is implicated in cellular adhesion, clonogenic growth and tumorigenicity. Its overexpression has been found in various cancers. It undergoes alternative splicing resulting in different protein isoforms. Recently WHSC1 has been identified as a critical epigenetic regulator for Tfh differentiation.

Notable Publications

Author	Pubmed ID	Journal	Application
Guanghui He	38996954	Cell Signal	WB

Storage

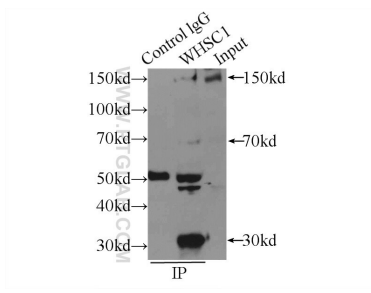
Storage:
Store at -20°C. Stable for one year after shipment.
Storage Buffer:
PBS with 0.02% sodium azide and 50% glycerol pH 7.3.
Aliquoting is unnecessary for -20°C storage

***** 20ul sizes contain 0.1% BSA**

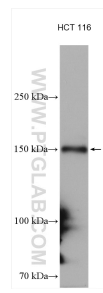
For technical support and original validation data for this product please contact:
T: 1 (888) 4PTGLAB (1-888-478-4522) (toll free in USA), or 1(312) 455-8498 (outside USA)
E: proteintech@ptglab.com
W: ptglab.com

This product is exclusively available under Proteintech Group brand and is not available to purchase from any other manufacturer.

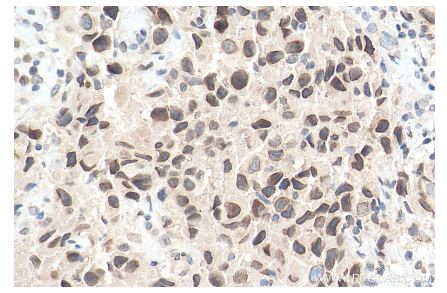
Selected Validation Data



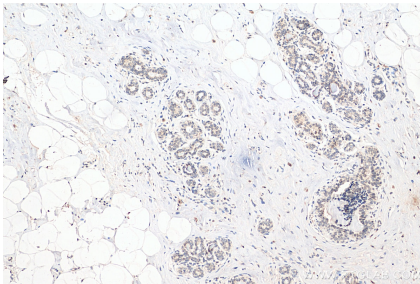
IP result of anti-WHSC1 (IP:22722-1-AP, 3ug; Detection:22722-1-AP 1:300) with HeLa cells lysate 2000ug.



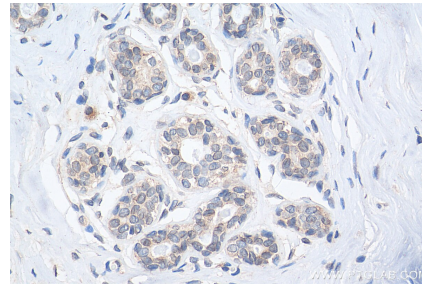
HCT 116 cells were subjected to SDS PAGE followed by western blot with 22722-1-AP (WHSC1 antibody) at dilution of 1:1000 incubated at room temperature for 1.5 hours.



Immunohistochemical analysis of paraffin-embedded human breast cancer tissue slide using 22722-1-AP (WHSC1 antibody) at dilution of 1:200 (under 40x lens). Heat mediated antigen retrieval with Tris-EDTA buffer (pH 9.0).



Immunohistochemical analysis of paraffin-embedded human breast cancer tissue slide using 22722-1-AP (WHSC1 antibody) at dilution of 1:200 (under 10x lens). Heat mediated antigen retrieval with Tris-EDTA buffer (pH 9.0).



Immunohistochemical analysis of paraffin-embedded human breast cancer tissue slide using 22722-1-AP (WHSC1 antibody) at dilution of 1:200 (under 40x lens). Heat mediated antigen retrieval with Tris-EDTA buffer (pH 9.0).