

For Research Use Only

# SLC26A4 Polyclonal antibody

Catalog Number: 22726-1-AP



## Basic Information

|  |   |   |
|--|---|---|
| <b>Catalog Number:</b><br>22726-1-AP                         | <b>GenBank Accession Number:</b><br>BC153002            | <b>Purification Method:</b><br>Antigen affinity purification  |
| <b>Size:</b><br>150ul, Concentration: 510 ug/ml by Nanodrop; | <b>GeneID (NCBI):</b><br>5172                           | <b>Recommended Dilutions:</b><br>WB: 1:500-1:1000<br>IP: 0.5-4.0 ug for 1.0-3.0 mg of total protein lysate<br>IHC: 1:50-1:500 |
| <b>Source:</b><br>Rabbit                                     | <b>UNIPROT ID:</b><br>O43511                            |   |
| <b>Isotype:</b><br>IgG                                       | <b>Full Name:</b><br>solute carrier family 26, member 4 |   |
| <b>Immunogen Catalog Number:</b><br>AG18622                  | <b>Calculated MW:</b><br>780 aa, 86 kDa                 |   |
|  | <b>Observed MW:</b><br>90 kDa                           |   |

## Applications

|  |   |
|--|---|
| <b>Tested Applications:</b><br>WB, IHC, IP, ELISA  | <b>Positive Controls:</b><br>WB : 37°C incubated A549 cells,<br>IP : mouse kidney tissue,<br>IHC : mouse kidney tissue, mouse lung tissue |
| <b>Species Specificity:</b><br>human   |   |
| <b>Note-IHC: suggested antigen retrieval with TE buffer pH 9.0; (*) Alternatively, antigen retrieval may be performed with citrate buffer pH 6.0</b> |   |

## Storage

**Storage:**  
Store at -20°C. Stable for one year after shipment.  
**Storage Buffer:**  
PBS with 0.02% sodium azide and 50% glycerol, pH7.3  
Aliquoting is unnecessary for -20°C storage

\*\*\* 20ul sizes contain 0.1% BSA

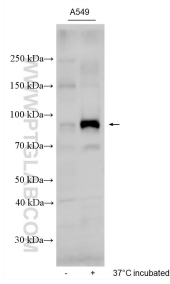
For technical support and original validation data for this product please contact:

T: 1 (888) 4PTGLAB (1-888-478-4522) (toll free in USA), or 1(312) 455-8498 (outside USA)

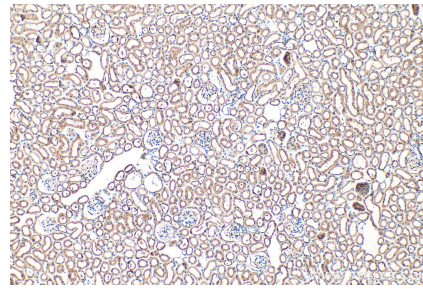
E: proteintech@ptglab.com  
W: ptglab.com

This product is exclusively available under Proteintech Group brand and is not available to purchase from any other manufacturer.

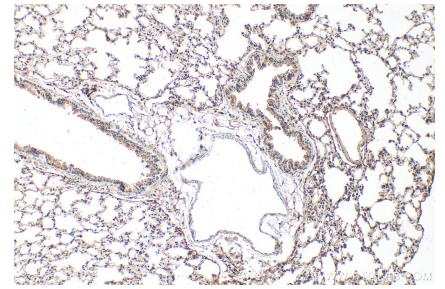
## Selected Validation Data



37°C incubated A549 cells were subjected to SDS PAGE followed by western blot with 22726-1-AP (SLC26A4 antibody) at dilution of 1:500 incubated at room temperature for 1.5 hours.



Immunohistochemical analysis of paraffin-embedded mouse kidney tissue slide using 22726-1-AP (SLC26A4 antibody) at dilution of 1:200 (under 10x lens). Heat mediated antigen retrieval with Tris-EDTA buffer (pH 9.0).



Immunohistochemical analysis of paraffin-embedded mouse lung tissue slide using 22726-1-AP (SLC26A4 antibody) at dilution of 1:200 (under 10x lens). Heat mediated antigen retrieval with Tris-EDTA buffer (pH 9.0).



IP result of anti-SLC26A4 (IP:22726-1-AP, 4ug; Detection:22726-1-AP 1:500) with mouse kidney tissue lysate 4800ug.