

For Research Use Only

GDEP Polyclonal antibody

Catalog Number: 22744-1-AP



Basic Information

Catalog Number:

22744-1-AP

Size:

150ul, Concentration: 240 ug/ml by Nanodrop and 133 ug/ml by Bradford method using BSA as the standard;

Source:

Rabbit

Isotype:

IgG

Immunogen Catalog Number:

AG19087

GenBank Accession Number:

BC125139

GeneID (NCBI):

118425

Full Name:

gene differentially expressed in prostate

Calculated MW:

34 aa, 4 kDa

Observed MW:

4 kDa

Purification Method:

Antigen Affinity purified

Recommended Dilutions:

WB 1:500-1:2000

IHC 1:50-1:200

IF/ICC 1:20-1:200

Applications

Tested Applications:

WB, IHC, IF/ICC, ELISA

Species Specificity:

human

Note-IHC: suggested antigen retrieval with TE buffer pH 9.0; (*) Alternatively, antigen retrieval may be performed with citrate buffer pH 6.0

Positive Controls:

WB : PC-3 cells,

IHC : human prostate cancer tissue, human prostate hyperplasia tissue

IF/ICC : PC-3 cells,

Storage

Storage:

Store at -20°C. Stable for one year after shipment.

Storage Buffer:

PBS with 0.02% sodium azide and 50% glycerol pH 7.3.

Aliquoting is unnecessary for -20°C storage

*** 20ul sizes contain 0.1% BSA

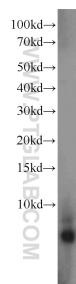
For technical support and original validation data for this product please contact:

T: 1 (888) 4PTGLAB (1-888-478-4522) (toll free in USA), or 1(312) 455-8498 (outside USA)

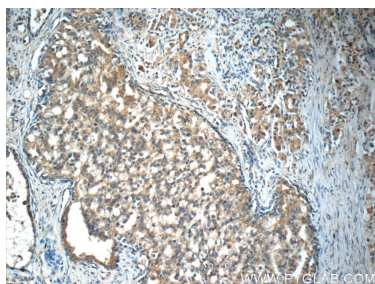
E: proteintech@ptglab.com
W: ptglab.com

This product is exclusively available under Proteintech Group brand and is not available to purchase from any other manufacturer.

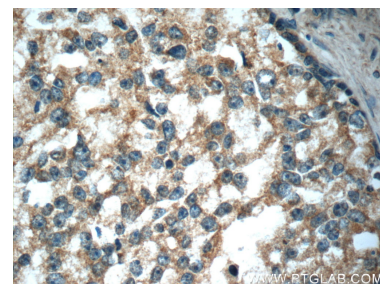
Selected Validation Data



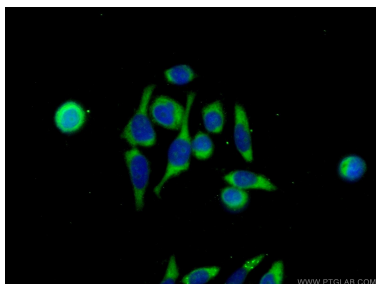
PC-3 cells were subjected to SDS PAGE followed by western blot with 22744-1-AP (GDEP antibody) at dilution of 1:1000 incubated at room temperature for 1.5 hours.



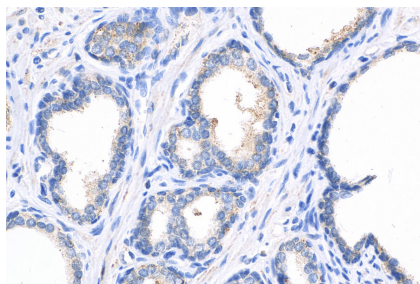
Immunohistochemical analysis of paraffin-embedded human prostate cancer slide using 22744-1-AP (GDEP Antibody) at dilution of 1:50. (under 10x lens).



Immunohistochemical analysis of paraffin-embedded human prostate cancer slide using 22744-1-AP (GDEP Antibody) at dilution of 1:50. (under 40x lens).



Immunofluorescent analysis of (-20°C Ethanol) fixed PC-3 cells using 22744-1-AP (GDEP antibody) at dilution of 1:50 and Alexa Fluor 488-conjugated Goat Anti-Rabbit IgG(H+L).



Immunohistochemical analysis of paraffin-embedded human prostate cancer tissue slide using 22744-1-AP (GDEP antibody) at dilution of 1:200 (under 40x lens). Heat mediated antigen retrieval with Tris-EDTA buffer (pH 9.0).