

For Research Use Only

SARDH Polyclonal antibody

Catalog Number: 22762-1-AP **3 Publications**



Basic Information

Catalog Number: 22762-1-AP	GenBank Accession Number: BC136364	Purification Method: Antigen affinity purification
Size: 150ul, Concentration: 260 µg/ml by Nanodrop and 220 µg/ml by Bradford method using BSA as the standard;	GeneID (NCBI): 1757	Recommended Dilutions: WB 1:1000-1:4000 IHC 1:50-1:500
Source: Rabbit	Full Name: sarcosine dehydrogenase	
Isotype: IgG	Calculated MW: 918 aa, 101 kDa	
Immunogen Catalog Number: AG18738	Observed MW: 100 kDa	

Applications

Tested Applications: IHC, WB, ELISA	Positive Controls: WB : mouse liver tissue, rat liver tissue IHC : human liver cancer tissue,
Cited Applications: IHC, WB	
Species Specificity: human, rat, mouse	
Cited Species: human, rat, mouse	
Note-IHC: suggested antigen retrieval with TE buffer pH 9.0; (*) Alternatively, antigen retrieval may be performed with citrate buffer pH 6.0	

Background Information

Notable Publications

Author	Pubmed ID	Journal	Application
Haixiang Xie	38164283	J Cancer	IHC
Fadzai Teramayi	38128812	Brain Res	WB
Yasutake Tanaka	36810603	Sci Rep	WB

Storage

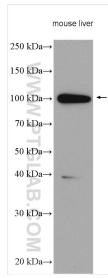
Storage:
Store at -20°C. Stable for one year after shipment.
Storage Buffer:
PBS with 0.02% sodium azide and 50% glycerol pH 7.3.
Aliquoting is unnecessary for -20°C storage

*** 20ul sizes contain 0.1% BSA

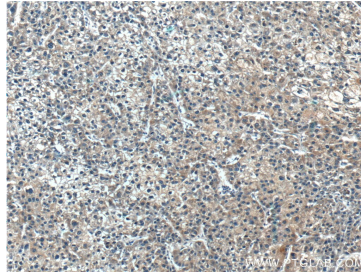
For technical support and original validation data for this product please contact:
T: 1 (888) 4PTGLAB (1-888-478-4522) (toll free in USA), or 1(312) 455-8498 (outside USA)
E: proteintech@ptglab.com
W: ptglab.com

This product is exclusively available under Proteintech Group brand and is not available to purchase from any other manufacturer.

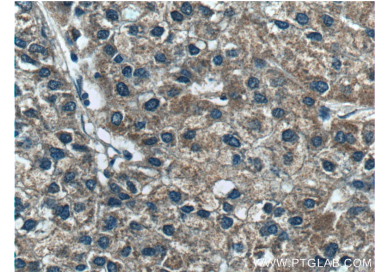
Selected Validation Data



mouse liver tissue were subjected to SDS PAGE followed by western blot with 22762-1-AP (SARDH antibody) at dilution of 1:2000 incubated at room temperature for 1.5 hours.



Immunohistochemical analysis of paraffin-embedded human liver cancer tissue slide using 22762-1-AP (SARDH Antibody) at dilution of 1:100 (under 10x lens).



Immunohistochemical analysis of paraffin-embedded human liver cancer tissue slide using 22762-1-AP (SARDH Antibody) at dilution of 1:100 (under 40x lens).