

For Research Use Only

# MIXL1 Polyclonal antibody

Catalog Number: 22772-1-AP **7 Publications**



## Basic Information

<b>Catalog Number:</b> 22772-1-AP	<b>GenBank Accession Number:</b> BC113441	<b>Purification Method:</b> Antigen Affinity purified
<b>Size:</b> 150ul, Concentration: 900 µg/ml by Nanodrop and 507 µg/ml by Bradford method using BSA as the standard;	<b>GeneID (NCBI):</b> 83881	<b>Recommended Dilutions:</b> WB 1:500-1:2000 IF 1:50-1:500
<b>Source:</b> Rabbit	<b>Full Name:</b> Mix1 homeobox-like 1 (Xenopus laevis)	
<b>Isotype:</b> IgG	<b>Calculated MW:</b> 232 aa, 25 kDa	
<b>Immunogen Catalog Number:</b> AG18732	<b>Observed MW:</b> 20 kDa	

## Applications

<b>Tested Applications:</b> IF, WB, ELISA	<b>Positive Controls:</b> WB : HEK-293 cells, rat pancreas tissue IF : HEK-293 cells,
<b>Cited Applications:</b> IF	
<b>Species Specificity:</b> human, rat	
<b>Cited Species:</b> human, pig	

## Background Information

Mix1 homeobox-like 1 (MIXL1) Transcription factor that play a central role in proper axial mesendoderm morphogenesis and endoderm formation. Required for efficient differentiation of cells from the primitive streak stage to blood, by acting early in the recruitment and/or expansion of mesodermal progenitors to the hemangioblastic and hematopoietic lineages. Also involved in the morphogenesis of the heart and the gut during embryogenesis. Acts as a negative regulator of brachyury expression. This antibody is specific to MIXL1.

## Notable Publications

Author	Pubmed ID	Journal	Application
Julie Bejoy	34746862	STAR Protoc	IF
Julie Bejoy	35883199	Stem Cell Res Ther	IF
Bingbing Ke	30038385	Cell Death Differ	

## Storage

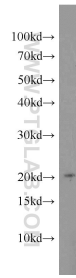
**Storage:**  
Store at -20°C. Stable for one year after shipment.  
**Storage Buffer:**  
PBS with 0.02% sodium azide and 50% glycerol pH 7.3.  
Aliquoting is unnecessary for -20°C storage

\*\*\* 20ul sizes contain 0.1% BSA

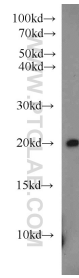
For technical support and original validation data for this product please contact:  
T: 1 (888) 4PTGLAB (1-888-478-4522) (toll free in USA), or 1(312) 455-8498 (outside USA)  
E: proteintech@ptglab.com  
W: ptglab.com

This product is exclusively available under Proteintech Group brand and is not available to purchase from any other manufacturer.

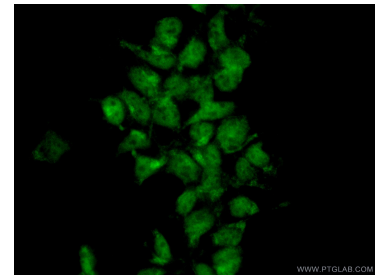
## Selected Validation Data



HEK-293 cells were subjected to SDS PAGE followed by western blot with 22772-1-AP (MIXL1 antibody) at dilution of 1:1000 incubated at room temperature for 1.5 hours.



rat pancreas tissue were subjected to SDS PAGE followed by western blot with 22772-1-AP (MIXL1 antibody) at dilution of 1:500 incubated at room temperature for 1.5 hours.



Immunofluorescent analysis of (10% Formaldehyde) fixed HEK-293 cells using 22772-1-AP (MIXL1 antibody) at dilution of 1:50 and Alexa Fluor 488-conjugated AffiniPure Goat Anti-Rabbit IgG(H+L).