

For Research Use Only

LIFR Polyclonal antibody

Catalog Number: 22779-1-AP

Featured Product

16 Publications



Basic Information

Catalog Number: 22779-1-AP	GenBank Accession Number: BC153096	Purification Method: Antigen Affinity purified
Size: 150ul, Concentration: 600 µg/ml by Nanodrop;	GeneID (NCBI): 3977	Recommended Dilutions: WB 1:500-1:1000 IP 0.5-4.0 ug for 1.0-3.0 mg of total protein lysate IHC 1:20-1:200 IF 1:50-1:500
Source: Rabbit	Full Name: leukemia inhibitory factor receptor alpha	
Isotype: IgG	Calculated MW: 1097 aa, 124 kDa	
Immunogen Catalog Number: AG18742	Observed MW: 190 kDa	

Applications

Tested Applications:
FC, IF, IHC, IP, WB, ELISA

Cited Applications:
IF, IHC, WB

Species Specificity:
human, mouse

Cited Species:
human, mouse

Note-IHC: suggested antigen retrieval with TE buffer pH 9.0; (*) Alternatively, antigen retrieval may be performed with citrate buffer pH 6.0

Positive Controls:

WB: human skeletal muscle tissue, mouse skeletal muscle tissue

IP: mouse skeletal muscle tissue,

IHC: human skeletal muscle tissue, human placenta tissue, mouse cerebellum tissue, human kidney tissue

IF: HeLa cells,

Background Information

LIFR, also known as CD118, is a subunit of a receptor for leukemia inhibitory factor (LIF). LIF is a pleiotropic cytokine of the interleukin-6 family which affects the differentiation, survival, and proliferation of a wide variety of cells in the adult and the embryo. LIFR is the low-affinity binding chain that, together with the high-affinity converter subunit gp130, forms a high-affinity receptor complex that mediates the action of LIF. The high-affinity complex also binds a related cytokine, oncostatin M (PMID: 8999038). LIFR has also been identified as a breast cancer metastasis suppressor that functions through the HIPPO-YAP pathway (PMID: 23001183).

Notable Publications

Author	Pubmed ID	Journal	Application
Yuta Kurashina	31701022	Commun Biol	WB
Ming-Ying Ling	36326546	Arch Biochem Biophys	IHC
Chikahiro Imashiro	29993416	IEEE Trans Biomed Eng	WB

Storage

Storage:

Store at -20°C. Stable for one year after shipment.

Storage Buffer:

PBS with 0.02% sodium azide and 50% glycerol pH 7.3.

Aliquoting is unnecessary for -20°C storage

*** 20ul sizes contain 0.1% BSA

For technical support and original validation data for this product please contact:

T: 1 (888) 4PTGLAB (1-888-478-4522) (toll free in USA), or 1(312) 455-8498 (outside USA)

E: proteintech@ptglab.com
W: ptglab.com

This product is exclusively available under Proteintech Group brand and is not available to purchase from any other manufacturer.

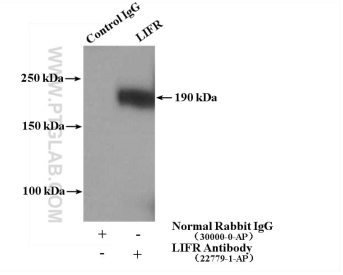
Selected Validation Data



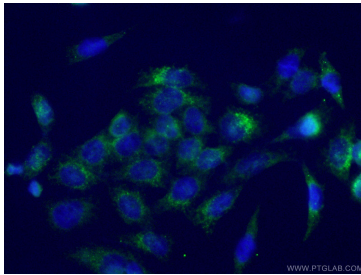
human skeletal muscle tissue were subjected to SDS PAGE followed by western blot with 22779-1-AP (LIFR antibody) at dilution of 1:800 incubated at room temperature for 1.5 hours.



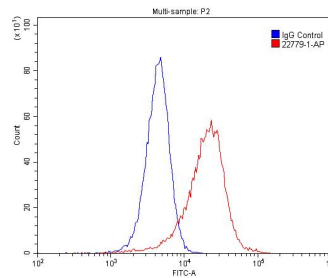
Immunohistochemical analysis of paraffin-embedded human skeletal muscle slide using 22779-1-AP (LIFR Antibody) at dilution of 1:50 (under 40x lens).



IP Result of anti-LIFR (IP:22779-1-AP, 4ug; Detection:22779-1-AP 1:1000) with mouse skeletal muscle tissue lysate 4000ug.



Immunofluorescent analysis of (-20°C Ethanol) fixed HeLa cells using 22779-1-AP (LIFR antibody) at dilution of 1:50 and Alexa Fluor 488-conjugated AffiniPure Goat Anti-Rabbit IgG(H+L).



1×10^6 HeLa cells were stained with .2ug LIFR antibody (22779-1-AP, red) and control antibody (blue). Fixed with 4% PFA blocked with 3% BSA (30 min). Alexa Fluor 488-conjugated AffiniPure Goat Anti-Rabbit IgG(H+L) with dilution 1:1500.