

For Research Use Only

MCT4 Polyclonal antibody, PBS Only

Catalog Number: 22787-1-PBS

Featured Product



Basic Information

Catalog Number:

22787-1-PBS

Size:

100ug, Concentration: 1mg/ml by Nanodrop;

Source:

Rabbit

Isotype:

IgG

Immunogen Catalog Number:

AG18788

GenBank Accession Number:

BC112269

GeneID (NCBI):

9123

UNIPROT ID:

O15427

Full Name:

solute carrier family 16, member 3 (monocarboxylic acid transporter 4)

Calculated MW:

465 aa, 49 kDa

Observed MW:

38-42 kDa

Purification Method:

Antigen affinity purification

Applications

Tested Applications:

WB, IHC, IF/ICC, FC (Intra), ELISA

Species Specificity:

human, mouse, rat

Background Information

The monocarboxylate transporter 4 (MCT4, also known as SLC16A3) is involved in the transportation of metabolically important monocarboxylates such as lactate, pyruvate, acetate and ketone bodies. It is widely expressed, particularly strongly in glycolytic tissues such as white skeletal muscle fibres, astrocytes, white blood cells, chondrocytes and some mammalian cell lines. MCT4 is also linked to tumor biology because it mediates lactate transport across membranes resulting in antiapoptotic effects.

Storage

Storage:

Store at -80°C.

Storage Buffer:

PBS only, pH7.3

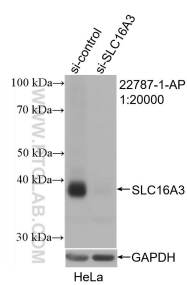
For technical support and original validation data for this product please contact:

T: 1 (888) 4PTGLAB (1-888-478-4522) (toll free in USA), or 1(312) 455-8498 (outside USA)

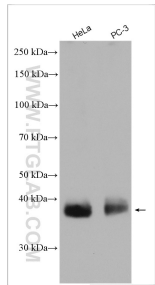
E: proteintech@ptglab.com
W: ptglab.com

This product is exclusively available under Proteintech Group brand and is not available to purchase from any other manufacturer.

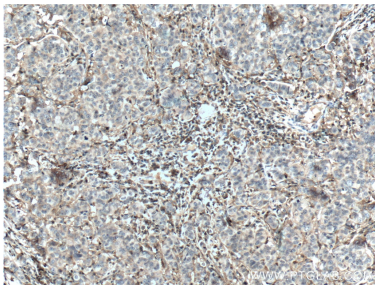
Selected Validation Data



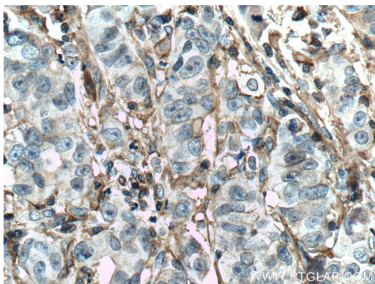
WB result of MCT4 antibody (22787-1-AP; 1:20000; incubated at room temperature for 1.5 hours) with sh-Control and sh-MCT4 transfected HeLa cells. This data was developed using the same antibody clone with 22787-1-PBS in a different storage buffer formulation.



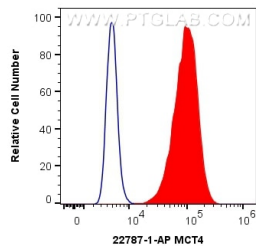
Various lysates were subjected to SDS PAGE followed by western blot with 22787-1-AP (MCT4 antibody) at dilution of 1:20000 incubated at room temperature for 1.5 hours. This data was developed using the same antibody clone with 22787-1-PBS in a different storage buffer formulation.



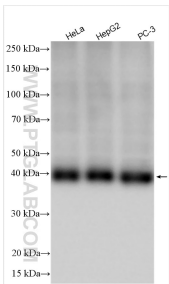
Immunohistochemical analysis of paraffin-embedded human prostate cancer tissue slide using 22787-1-AP (MCT4 antibody at dilution of 1:200 (under 10x lens). Heat mediated antigen retrieval with Tris-EDTA buffer (pH 9.0). This data was developed using the same antibody clone with 22787-1-PBS in a different storage buffer formulation.



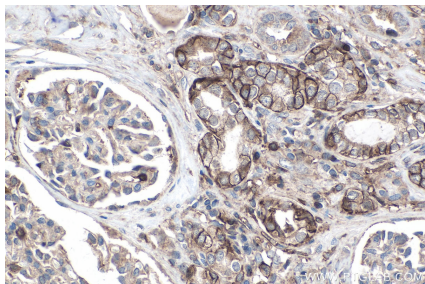
Immunohistochemical analysis of paraffin-embedded human prostate cancer tissue slide using 22787-1-AP (MCT4 antibody at dilution of 1:200 (under 40x lens). Heat mediated antigen retrieval with Tris-EDTA buffer (pH 9.0). This data was developed using the same antibody clone with 22787-1-PBS in a different storage buffer formulation.



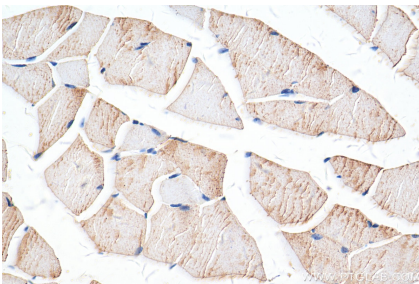
1X10⁶ HepG2 cells were intracellularly stained with 0.8 ug Anti-Human MCT4 (22787-1-AP) and Coralite@488-Conjugated AffiniPure Goat Anti-Rabbit IgG(H+L) at dilution 1:1000 (red), or 0.8 ug rabbit IgG isotype control (blue). Cells were fixed with 4% PFA and permeabilized with Flow Cytometry Perm Buffer. This data was developed using the same antibody clone with 22787-1-PBS in a different storage buffer formulation.



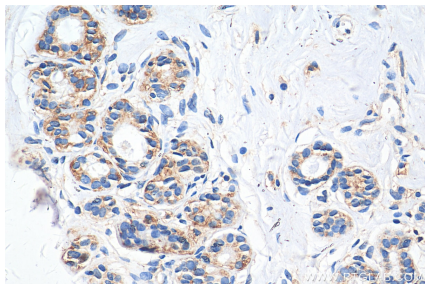
Various lysates were subjected to SDS PAGE followed by western blot with 22787-1-AP (MCT4 antibody) at dilution of 1:20000 incubated at room temperature for 1.5 hours. This data was developed using the same antibody clone with 22787-1-PBS in a different storage buffer formulation.



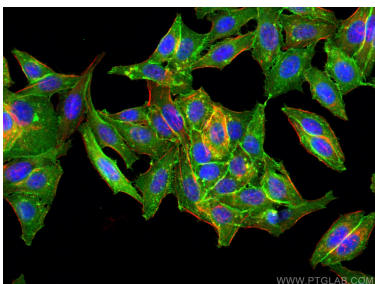
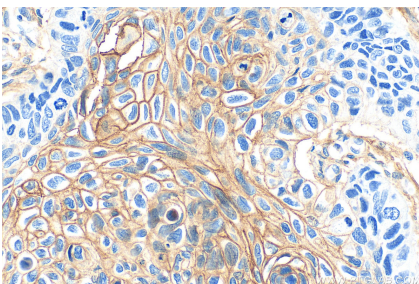
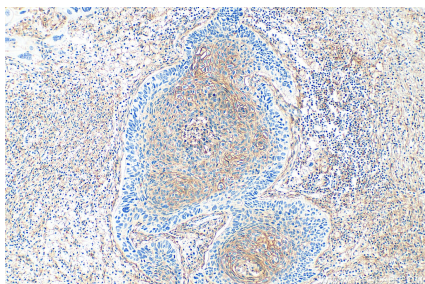
Immunohistochemical analysis of paraffin-embedded human renal cell carcinoma tissue slide using 22787-1-AP (MCT4 antibody) at dilution of 1:8000 (under 40x lens). Heat mediated antigen retrieval with Tris-EDTA buffer (pH 9.0). This data was developed using the same antibody clone with 22787-1-PBS in a different storage buffer formulation.



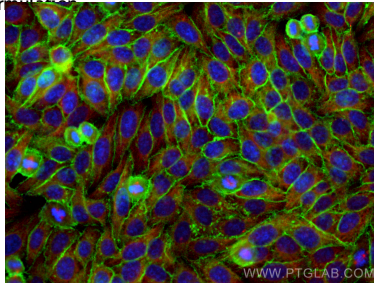
Immunohistochemical analysis of paraffin-embedded mouse skeletal muscle tissue slide using 22787-1-AP (MCT4 antibody) at dilution of 1:2000 (under 40x lens). Heat mediated antigen retrieval with Tris-EDTA buffer (pH 9.0). This data was developed using the same antibody clone with 22787-1-PBS in a different storage buffer formulation.



Immunohistochemical analysis of paraffin-embedded human breast cancer tissue slide using 22787-1-AP (MCT4 antibody) at dilution of 1:2000 (under 40x lens). Heat mediated antigen retrieval with Tris-EDTA buffer (pH 9.0). This data was developed using the same antibody clone with 22787-1-PBS in a different storage buffer formulation.

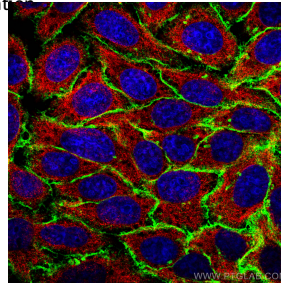


Immunohistochemical analysis of paraffin-embedded human lung cancer tissue slide using 22787-1-AP (MCT4 antibody) at dilution of 1:8000 (under 10x lens). Heat mediated antigen retrieval with Tris-EDTA buffer (pH 9.0). This data was developed using the same antibody clone with 22787-1-PBS in a different storage buffer formulation.



Immunofluorescent analysis of (-20°C Ethanol) fixed HepG2 cells using MCT4 antibody (22787-1-AP) at dilution of 1:200 and CoraLite®488-Conjugated AffiniPure Goat Anti-Rabbit IgG(H+L), Alpha Tubulin antibody (66031-1-Ig, Clone: 1E4C11, red). This data was developed using the same antibody clone with 22787-1-PBS in a different storage buffer formulation.

Immunohistochemical analysis of paraffin-embedded human lung cancer tissue slide using 22787-1-AP (MCT4 antibody) at dilution of 1:8000 (under 40x lens). Heat mediated antigen retrieval with Tris-EDTA buffer (pH 9.0). This data was developed using the same antibody clone with 22787-1-PBS in a different storage buffer formulation.



Immunofluorescent analysis of (-20°C Ethanol) fixed HepG2 cells using MCT4 antibody (22787-1-AP) at dilution of 1:200 and CoraLite®488-Conjugated AffiniPure Goat Anti-Rabbit IgG(H+L), Alpha Tubulin antibody (66031-1-Ig, Clone: 1E4C11, red) and CoraLite594-conjugated Goat Anti-Mouse IgG(H+L)(SA00013-3). This data was developed using the same antibody clone with 22787-1-PBS in a different storage buffer formulation.

Immunofluorescent analysis of (-20°C Ethanol) fixed HepG2 cells using MCT4 antibody (22787-1-AP) at dilution of 1:400 and CoraLite®488-Conjugated AffiniPure Goat Anti-Rabbit IgG(H+L), CL594-Phalloidin (red). This data was developed using the same antibody clone with 22787-1-PBS in a different storage buffer formulation.