

For Research Use Only

# PHLPP Polyclonal antibody

Catalog Number: 22789-1-AP

Featured Product

35 Publications



## Basic Information

### Catalog Number:

22789-1-AP

### Size:

150ul, Concentration: 1200 ug/ml by Nanodrop;

### Source:

Rabbit

### Isotype:

IgG

### Immunogen Catalog Number:

AG18794

### GenBank Accession Number:

BC126277

### GeneID (NCBI):

23239

### UNIPROT ID:

O60346

### Full Name:

PH domain and leucine rich repeat protein phosphatase

### Calculated MW:

1717 aa, 184 kDa

### Observed MW:

185 kDa

### Purification Method:

Antigen affinity purification

### Recommended Dilutions:

WB 1:2000-1:10000

IP 0.5-4.0 ug for 1.0-3.0 mg of total protein lysate

IHC 1:50-1:500

IF/ICC 1:200-1:800

## Applications

### Tested Applications:

WB, IHC, IF/ICC, IP, ELISA

### Cited Applications:

WB, IHC, IF, IP

### Species Specificity:

human, mouse, rat

### Cited Species:

human, mouse, rat, pig

**Note-IHC: suggested antigen retrieval with TE buffer pH 9.0; (\*) Alternatively, antigen retrieval may be performed with citrate buffer pH 6.0**

### Positive Controls:

WB : HEK-293 cells, HeLa cells, mouse brain tissue, rat brain tissue

IP : mouse brain tissue,

IHC : human liver tissue, human colon cancer tissue

IF/ICC : HeLa cells,

## Background Information

PHLPP (PH domain leucine-rich-repeats protein phosphatase) belongs to a novel family of Ser/Thr protein phosphatases that consists of PHLPP1 and PHLPP2 isoforms. It has been shown that PHLPP negatively regulates multiple oncogenic pathways by directly dephosphorylating and inactivating key signaling molecules, including Akt, S6K, and RAF1. Observed MW of PHLPP is 185 kDa.

## Notable Publications

Author	Pubmed ID	Journal	Application
Viola H Lobert	35997536	Development	WB,IF
Regina B Troyanovsky	34634305	J Biol Chem	WB
Zhao Zhou	36217445	J Hepatocell Carcinoma	WB

## Storage

### Storage:

Store at -20°C. Stable for one year after shipment.

### Storage Buffer:

PBS with 0.02% sodium azide and 50% glycerol pH 7.3.

Aliquoting is unnecessary for -20°C storage

\*\*\* 20ul sizes contain 0.1% BSA

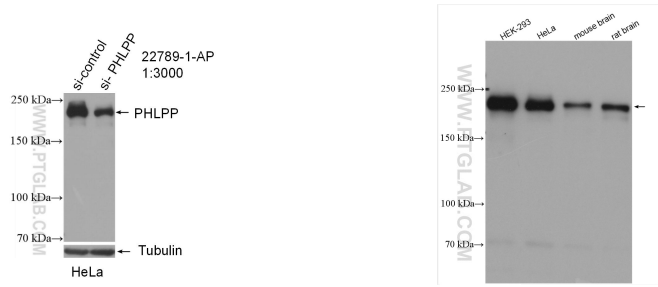
For technical support and original validation data for this product please contact:

T: 1 (888) 4PTGLAB (1-888-478-4522) (toll free in USA), or 1(312) 455-8498 (outside USA)

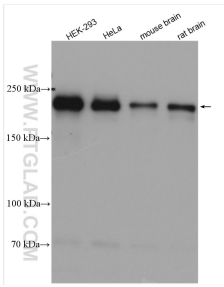
E: [proteintech@ptglab.com](mailto:proteintech@ptglab.com)  
W: [ptglab.com](http://ptglab.com)

This product is exclusively available under Proteintech Group brand and is not available to purchase from any other manufacturer.

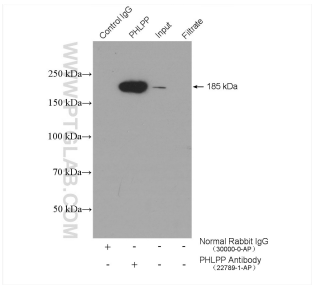
Selected Validation Data



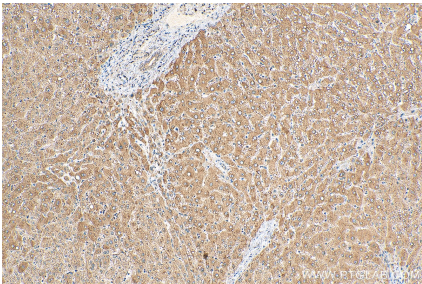
WB result of PHLPP antibody (22789-1-AP; 1:3000; incubated at room temperature for 1.5 hours) with sh-Control and sh-PHLPP transfected HeLa cells.



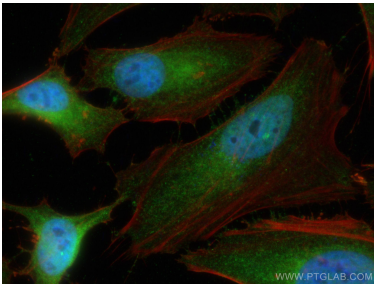
Various lysates were subjected to SDS PAGE followed by western blot with 22789-1-AP (PHLPP antibody) at dilution of 1:5000 incubated at room temperature for 1.5 hours.



IP result of anti-PHLPP (IP:22789-1-AP, 4ug; Detection:22789-1-AP 1:600) with mouse brain tissue lysate 4000 ug.



Immunohistochemical analysis of paraffin-embedded human liver tissue slide using 22789-1-AP (PHLPP antibody) at dilution of 1:200 (under 10x lens). Heat mediated antigen retrieval with Tris-EDTA buffer (pH 9.0).



Immunofluorescent analysis of (4% PFA) fixed HeLa cells using PHLPP antibody (22789-1-AP) at dilution of 1:400 and CoraLite®488-Conjugated Goat Anti-Rabbit IgG(H+L), CL594-Phalloidin (red).