

For Research Use Only

# IGF2BP1 Polyclonal antibody

Catalog Number: 22803-1-AP

Featured Product

100 Publications



## Basic Information

### Catalog Number:

22803-1-AP

### Size:

150ul, Concentration: 700 ug/ml by Nanodrop;

### Source:

Rabbit

### Isotype:

IgG

### Immunogen Catalog Number:

AG18859

### GenBank Accession Number:

BC156957

### GeneID (NCBI):

10642

### UNIPROT ID:

Q9NZI8

### Full Name:

insulin-like growth factor 2 mRNA binding protein 1

### Calculated MW:

577 aa, 63 kDa

### Observed MW:

65-70 kDa

### Purification Method:

Antigen affinity purification

### Recommended Dilutions:

WB: 1:5000-1:50000

IP: 0.5-4.0 ug for 1.0-3.0 mg of total protein lysate

IHC: 1:50-1:500

IF/ICC: 1:200-1:800

## Applications

### Tested Applications:

WB, IHC, IF/ICC, IP, ELISA

### Cited Applications:

WB, IHC, IF, IP, CoIP, RIP

### Species Specificity:

human, mouse, rat

### Cited Species:

human, mouse, rat, pig, chicken, zebrafish

### Positive Controls:

WB: HEK-293 cells, Jurkat cells, mouse kidney tissue, A375 cells, rat kidney tissue, HepG2 cells, HuH-7 cells

IP: HEK-293 cells,

IHC: human lung cancer tissue, human liver cancer tissue

IF/ICC: A375 cells,

**Note-IHC: suggested antigen retrieval with TE buffer pH 9.0; (\*) Alternatively, antigen retrieval may be performed with citrate buffer pH 6.0**

## Background Information

IGF2BP1, also named as CRDBP, VICKZ1, ZBP1, is a 577 amino acid protein, which belongs to the RRM IMP/VICKZ family. IGF2BP1 can form homodimers and heterodimers with IGF2BP1 and IGF2BP3. IGF2BP1 is mainly expressed in the embryo, including in fetal liver, fetal lung, fetal kidney, fetal thymus and also expressed follicles of ovary, as well as in gonocytes of testis, spermatogonia, semen, oocytes and placenta. IGF2BP1 is Expressed in various cancers, including testis and lung cancers, as well as kidney, prostate and trachea cancers. IGF2BP1 as RNA-binding factor that recruits target transcripts to cytoplasmic protein-RNA complexes (mRNPs). It also modulates the rate and location at which target transcripts encounter the translational apparatus and shields them from endonuclease attacks or microRNA-mediated degradation. The calculated molecular weight of IGF2BP1 is 63 kDa, but modified IGF2BP1 is about 65-70 kDa.

## Notable Publications

| Author            | Pubmed ID | Journal        | Application |
|-------------------|-----------|----------------|-------------|
| Kusuma Suphakhong | 36183833  | J Biol Chem    | WB          |
| Mei-Jia Zhu       | 32918374  | J Cell Mol Med | WB, IHC     |
| Baochi Ou         | 36302751  | Cell Death Dis | WB          |

## Storage

### Storage:

Store at -20°C. Stable for one year after shipment.

### Storage Buffer:

PBS with 0.02% sodium azide and 50% glycerol, pH7.3

Aliquoting is unnecessary for -20°C storage

\*\*\* 20ul sizes contain 0.1% BSA

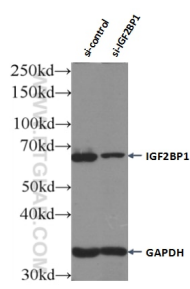
For technical support and original validation data for this product please contact:

T: 1 (888) 4PTGLAB (1-888-478-4522) (toll free in USA), or 1(312) 455-8498 (outside USA)

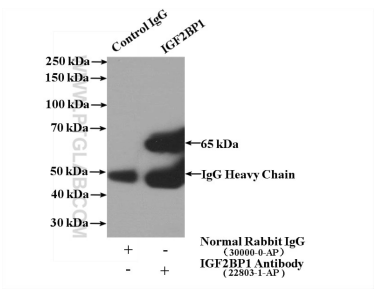
E: proteintech@ptglab.com  
W: ptglab.com

This product is exclusively available under Proteintech Group brand and is not available to purchase from any other manufacturer.

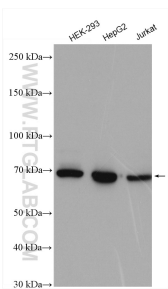
Selected Validation Data



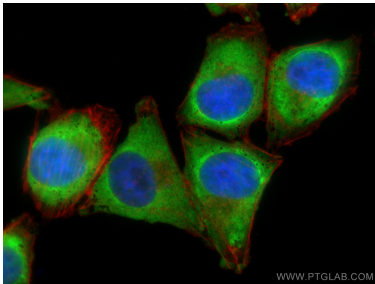
WB result of IGF2BP1 antibody (22803-1-AP; 1:6000; incubated at room temperature for 1.5 hours) with sh-Control and sh-IGF2BP1 transfected Jurkat cells.



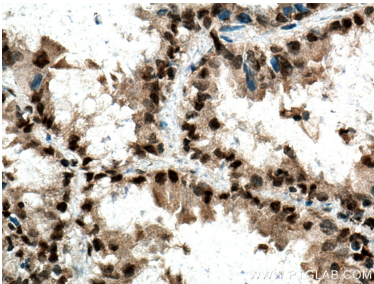
IP result of anti-IGF2BP1 (IP:22803-1-AP, 4ug; Detection:22803-1-AP 1:1000) with HEK-293 cells lysate 1480ug.



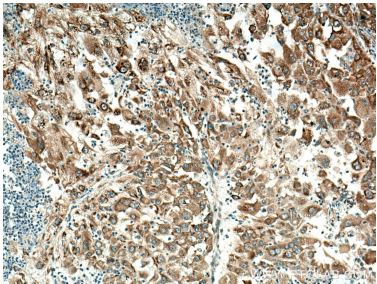
Various lysates were subjected to SDS PAGE followed by western blot with 22803-1-AP (IGF2BP1 antibody) at dilution of 1:20000 incubated at room temperature for 1.5 hours.



Immunofluorescent analysis of (4% PFA) fixed A375 cells using IGF2BP1 antibody (22803-1-AP) at dilution of 1:400 and CoraLite®488-Conjugated Goat Anti-Rabbit IgG(H+L) (SA00013-2), CL594-Phalloidin (red).



Immunohistochemical analysis of paraffin-embedded human lung cancer tissue slide using 22803-1-AP (IGF2BP1 antibody) at dilution of 1:200 (under 40x lens). Heat mediated antigen retrieval with Tris-EDTA buffer (pH 9.0).



Immunohistochemical analysis of paraffin-embedded human liver cancer tissue slide using 22803-1-AP (IGF2BP1 antibody) at dilution of 1:200 (under 10x lens). Heat mediated antigen retrieval with Tris-EDTA buffer (pH 9.0).