

For Research Use Only

C7orf30 Polyclonal antibody

Catalog Number: 22838-1-AP

5 Publications



Basic Information

Catalog Number:

22838-1-AP

Size:

150ul, Concentration: 650 ug/ml by Nanodrop;

Source:

Rabbit

Isotype:

IgG

Immunogen Catalog Number:

AG18286

GenBank Accession Number:

BC012331

GeneID (NCBI):

115416

UNIPROT ID:

Q96EH3

Full Name:

chromosome 7 open reading frame 30

Calculated MW:

234 aa, 26 kDa

Observed MW:

26-28 kDa

Purification Method:

Antigen affinity purification

Recommended Dilutions:

WB 1:1000-1:6000

IHC 1:20-1:200

Applications

Tested Applications:

WB, IHC, ELISA

Cited Applications:

WB

Species Specificity:

human

Cited Species:

human

Note-IHC: suggested antigen retrieval with TE buffer pH 9.0; (*) Alternatively, antigen retrieval may be performed with citrate buffer pH 6.0

Positive Controls:

WB : HEK-293 cells, HeLa cells, HepG2 cells, K-562 cells, U-251 cells

IHC : human testis tissue, human liver tissue

Background Information

C7orf30, also known as MALSU1, is a member of the iojap protein family. It was predicted to enable ribosomal large subunit binding activity. It was involved in negative regulation of mitochondrial translation and ribosomal large subunit biogenesis.

Notable Publications

Author	Pubmed ID	Journal	Application
Hauke S Hillen	34135319	Nat Commun	WB
Ya-Ting Tu	25683708	Cell Rep	WB
Elena Lavdovskaia	30085210	Nucleic Acids Res	WB

Storage

Storage:

Store at -20°C. Stable for one year after shipment.

Storage Buffer:

PBS with 0.02% sodium azide and 50% glycerol pH 7.3.

Aliquoting is unnecessary for -20°C storage

*** 20ul sizes contain 0.1% BSA

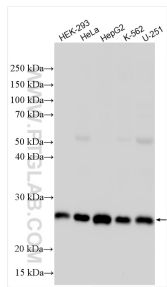
For technical support and original validation data for this product please contact:

T: 1 (888) 4PTGLAB (1-888-478-4522) (toll free in USA), or 1(312) 455-8498 (outside USA)

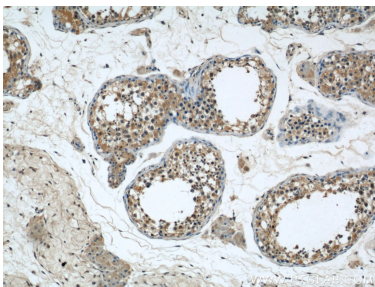
E: proteintech@ptglab.com
W: ptglab.com

This product is exclusively available under Proteintech Group brand and is not available to purchase from any other manufacturer.

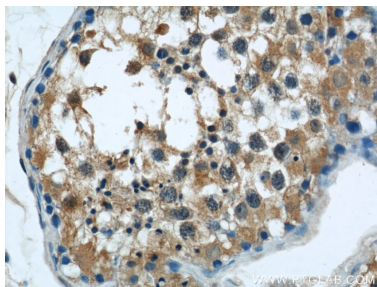
Selected Validation Data



Various lysates were subjected to SDS PAGE followed by western blot with 22838-1-AP (C7orf30 antibody) at dilution of 1:3000 incubated at room temperature for 1.5 hours.



Immunohistochemical analysis of paraffin-embedded human testis using 22838-1-AP (C7orf30 antibody) at dilution of 1:50 (under 10x lens).



Immunohistochemical analysis of paraffin-embedded human testis using 22838-1-AP (C7orf30 antibody) at dilution of 1:50 (under 40x lens).