

For Research Use Only

MALSU1 Polyclonal antibody, PBS Only

Catalog Number: 22838-1-PBS



Basic Information

Catalog Number: 22838-1-PBS	GenBank Accession Number: BC012331	Purification Method: Antigen affinity purification
Size: 100ug, Concentration: 1 mg/ml by Nanodrop;	GeneID (NCBI): 115416	
Source: Rabbit	UNIPROT ID: Q96EH3	
Isotype: IgG	Full Name: Mitochondrial assembly of ribosomal large subunit protein 1	
Immunogen Catalog Number: AG18286	Calculated MW: 234 aa, 26 kDa	
	Observed MW: 26-28 kDa	

Applications

Tested Applications:
WB, IHC, Indirect ELISA

Species Specificity:
human

Background Information

C7orf30, also known as MALSU1, is a member of the iojap protein family. It was predicted to enable ribosomal large subunit binding activity. It was involved in negative regulation of mitochondrial translation and ribosomal large subunit biogenesis.

Storage

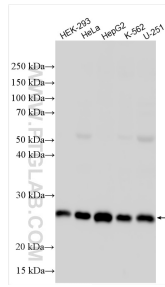
Storage:
Store at -80°C.

Storage Buffer:
PBS only, pH7.3

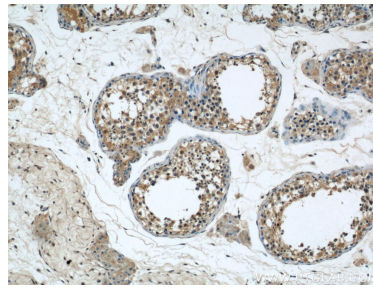
For technical support and original validation data for this product please contact:
T: 1 (888) 4PTGLAB (1-888-478-4522) (toll free in USA), or 1(312) 455-8498 (outside USA) E: proteintech@ptglab.com
W: ptglab.com

This product is exclusively available under Proteintech Group brand and is not available to purchase from any other manufacturer.

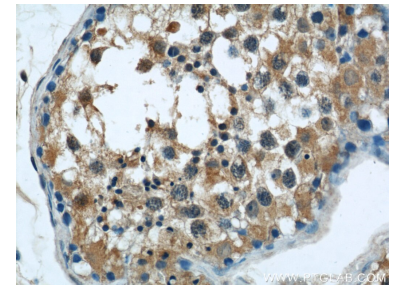
Selected Validation Data



Various lysates were subjected to SDS PAGE followed by western blot with 22838-1-AP (C7orf30 antibody) at dilution of 1:3000 incubated at room temperature for 1.5 hours. This data was developed using the same antibody clone with 22838-1-PBS in a different storage buffer formulation.



Immunohistochemical analysis of paraffin-embedded human testis using 22838-1-AP (C7orf30 antibody) at dilution of 1:50 (under 10x lens). This data was developed using the same antibody clone with 22838-1-PBS in a different storage buffer formulation.



Immunohistochemical analysis of paraffin-embedded human testis using 22838-1-AP (C7orf30 antibody) at dilution of 1:50 (under 40x lens). This data was developed using the same antibody clone with 22838-1-PBS in a different storage buffer formulation.