

For Research Use Only

# OFD1 Polyclonal antibody

Catalog Number: 22851-1-AP **7 Publications**



## Basic Information

<b>Catalog Number:</b> 22851-1-AP	<b>GenBank Accession Number:</b> BC096344	<b>Purification Method:</b> Antigen affinity purification
<b>Size:</b> 150ul, Concentration: 450 µg/ml by Nanodrop;	<b>GeneID (NCBI):</b> 8481	<b>Recommended Dilutions:</b> WB 1:500-1:1000 IHC 1:20-1:200 IF 1:50-1:500
<b>Source:</b> Rabbit	<b>Full Name:</b> oral-facial-digital syndrome 1	
<b>Isotype:</b> IgG	<b>Calculated MW:</b> 1012 aa, 117 kDa	
<b>Immunogen Catalog Number:</b> AG18898	<b>Observed MW:</b> 43 kDa, 120 kDa	

## Applications

<b>Tested Applications:</b> IF, IHC, WB, ELISA	<b>Positive Controls:</b> WB : HeLa cells, SH-SY5Y cells
<b>Cited Applications:</b> IF, WB	<b>IHC :</b> human brain tissue,
<b>Species Specificity:</b> human	<b>IF :</b> HEK-293 cells,
<b>Cited Species:</b> human, rat, mouse, zebrafish	

**Note-IHC: suggested antigen retrieval with TE buffer pH 9.0; (\*) Alternatively, antigen retrieval may be performed with citrate buffer pH 6.0**

## Background Information

OFD1, also named CXorf5 and 71-7A, belongs to the OFD1 family. It has been implicated in several developmental syndromes, including a male-lethal X-linked dominant condition, Oral-Facial-Digital type 1 (OFD1) syndrome, X-linked recessive Simpson-Golabi-Behmel syndrome type 2 (SGBS2), and Joubert syndrome and related disorders (JSRDs). It is a component of the centrioles controlling mother and daughter centrioles' length. It recruits to the centriole IFT88 and centriole distal appendage-specific proteins including CEP164. Involved in the biogenesis of the cilium, a centriole-associated function. OFD1 plays an important role in development by regulating Wnt signaling and the specification of the left-right axis. This antibody recognizes all the isoforms of OFD1. The 43 kDa is isoform 2. The ~80 kDa band is unknown.

## Notable Publications

Author	Pubmed ID	Journal	Application
Dragomir B Krastev	29789535	Nat Commun	IF
Ryuji Kojima	35720483	Oncol Lett	WB,IF
Ji Hyun Shin	25796328	Biochem Biophys Res Commun	WB

## Storage

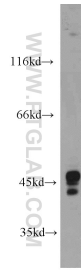
**Storage:**  
Store at -20°C. Stable for one year after shipment.  
**Storage Buffer:**  
PBS with 0.02% sodium azide and 50% glycerol pH 7.3.  
Aliquoting is unnecessary for -20°C storage

\*\*\* 20ul sizes contain 0.1% BSA

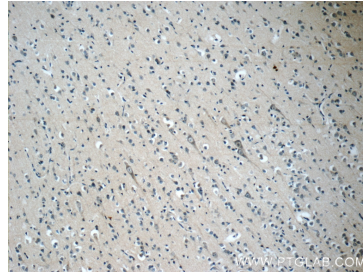
For technical support and original validation data for this product please contact:  
T: 1 (888) 4PTGLAB (1-888-478-4522) (toll free in USA), or 1(312) 455-8498 (outside USA)  
E: proteintech@ptglab.com  
W: ptglab.com

This product is exclusively available under Proteintech Group brand and is not available to purchase from any other manufacturer.

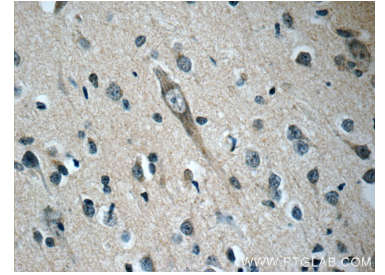
## Selected Validation Data



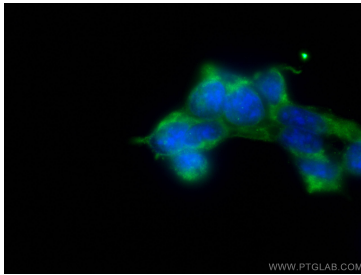
HeLa cells were subjected to SDS PAGE followed by western blot with 22851-1-AP (OFD1 antibody) at dilution of 1:500 incubated at room temperature for 1.5 hours.



Immunohistochemical analysis of paraffin-embedded human brain slide using 22851-1-AP (OFD1 Antibody) at dilution of 1:50. (under 10x lens).



Immunohistochemical analysis of paraffin-embedded human brain slide using 22851-1-AP (OFD1 Antibody) at dilution of 1:50. (under 40x lens).



Immunofluorescent analysis of (-20°C Ethanol) fixed HEK-293 cells using OFD1 antibody (22851-1-AP) at dilution of 1:200 and CoraLite®488-Conjugated AffiniPure Goat Anti-Rabbit IgG(H+L).