

For Research Use Only

# OFD1 Polyclonal antibody, PBS Only

Catalog Number: 22851-1-PBS



## Basic Information

<b>Catalog Number:</b> 22851-1-PBS	<b>GenBank Accession Number:</b> BC096344	<b>Purification Method:</b> Antigen affinity purification
<b>Size:</b> 100ug, Concentration: 1 mg/ml by Nanodrop;	<b>GeneID (NCBI):</b> 8481	
<b>Source:</b> Rabbit	<b>UNIPROT ID:</b> O75665	
<b>Isotype:</b> IgG	<b>Full Name:</b> oral-facial-digital syndrome 1	
<b>Immunogen Catalog Number:</b> AG18898	<b>Calculated MW:</b> 1012 aa, 117 kDa	
	<b>Observed MW:</b> 110-120 kDa	

## Applications

**Tested Applications:**  
IHC, IF/ICC, Indirect ELISA

**Species Specificity:**  
human

## Background Information

OFD1, also named CXorf5 and 71-7A, belongs to the OFD1 family. It has been implicated in several developmental syndromes, including a male-lethal X-linked dominant condition, Oral-Facial-Digital type 1 (OFD1) syndrome, X-linked recessive Simpson-Golabi-Behmel syndrome type 2 (SGBS2), and Joubert syndrome and related disorders (JSRDs). It is a component of the centrioles controlling mother and daughter centrioles' length. It recruits to the centriole IFT88 and centriole distal appendage-specific proteins including CEP164. Involved in the biogenesis of the cilium, a centriole-associated function. OFD1 plays an important role in development by regulating Wnt signaling and the specification of the left-right axis. This antibody recognizes all the isoforms of OFD1. The 43 kDa is isoform 2. The ~80 kDa band is unknown.

## Storage

**Storage:**  
Store at -80°C.

**Storage Buffer:**  
PBS Only

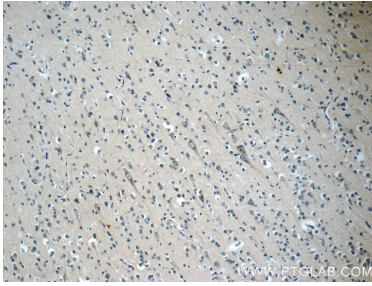
For technical support and original validation data for this product please contact:

T: 1 (888) 4PTGLAB (1-888-478-4522) (toll free in USA), or 1(312) 455-8498 (outside USA)

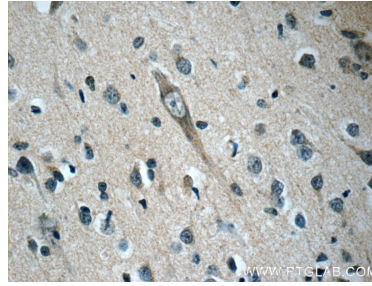
E: [proteintech@ptglab.com](mailto:proteintech@ptglab.com)  
W: [ptglab.com](http://ptglab.com)

**This product is exclusively available under Proteintech Group brand and is not available to purchase from any other manufacturer.**

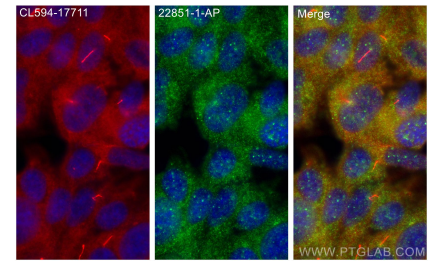
## Selected Validation Data



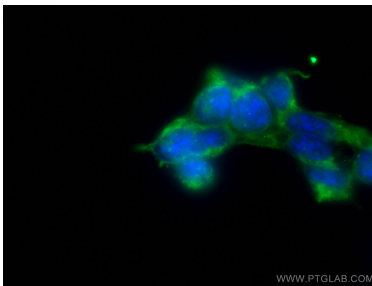
Immunohistochemical analysis of paraffin-embedded human brain slide using 22851-1-AP (OFD1 Antibody) at dilution of 1:50. (under 10x lens). This data was developed using the same antibody clone with 22851-1-PBS in a different storage buffer formulation.



Immunohistochemical analysis of paraffin-embedded human brain slide using 22851-1-AP (OFD1 Antibody) at dilution of 1:50. (under 40x lens). This data was developed using the same antibody clone with 22851-1-PBS in a different storage buffer formulation.



Immunofluorescent analysis of (-20°C Methanol) fixed hTERT-RPE1 cells using OFD1 antibody (22851-1-AP) at dilution of 1:400 and CoraLite®488-Conjugated AffiniPure Goat Anti-Rabbit IgG(H+L) (SA00013-2), CoraLite®594 ARL13B antibody (CL594-17711, red). This data was developed using the same antibody clone with 22851-1-PBS in a different storage buffer formulation.



Immunofluorescent analysis of (-20°C Ethanol) fixed HEK-293 cells using OFD1 antibody (22851-1-AP) at dilution of 1:200 and CoraLite®488-Conjugated AffiniPure Goat Anti-Rabbit IgG(H+L). This data was developed using the same antibody clone with 22851-1-PBS in a different storage buffer formulation.