

For Research Use Only

MEX3C Polyclonal antibody

Catalog Number: 22882-1-AP

2 Publications



Basic Information

Catalog Number: 22882-1-AP	GenBank Accession Number: BC148855	Purification Method: Antigen affinity purification
Size: 150ul , Concentration: 200 ug/ml by Nanodrop and 153 ug/ml by Bradford method using BSA as the standard;	GeneID (NCBI): 51320	Recommended Dilutions: WB 1:500-1:2000
Source: Rabbit	UNIPROT ID: Q5U5Q3	IHC 1:20-1:200
Isotype: IgG	Full Name: mex-3 homolog C (C. elegans)	IF/ICC 1:50-1:500
Immunogen Catalog Number: AG18931	Calculated MW: 659 aa, 69 kDa	
	Observed MW: 69 kDa	

Applications

Tested Applications: WB, IHC, IF/ICC, ELISA	Positive Controls: WB : HeLa cells, PC-3 cells
Cited Applications: WB, IHC, IF	IHC : human testis tissue,
Species Specificity: human, mouse, rat	IF/ICC : HeLa cells,
Cited Species: human, mouse	

Note-IHC: suggested antigen retrieval with TE buffer pH 9.0; (*) Alternatively, antigen retrieval may be performed with citrate buffer pH 6.0

Background Information

MEX3C(RNA-binding E3 ubiquitin-protein ligase MEX3C) is also named as RKHD2, RNF194 and may be involved in post-transcriptional regulatory mechanisms. MEX3C is necessary for normal postnatal growth and enhances the expression of local bone lgf1 expression(PMID:22927639). This protein is expressed in the cytoplasm and shuttles between the cytoplasm and the nucleus through the CRM1 export pathway. At least three MEX3C protein variants can be expressed by alternative splicing and alternative transcription initiation: MEX3C 659AA(containing 659 amino acid residues, about 82 kDa), MEX3C 464AA(about 64 kDa) and MEX3C 372AA(about 50 kDa)(PMID: 28982131,27053362,22863774).

Notable Publications

Author	Pubmed ID	Journal	Application
Adam M Zahm	31759059	Gastroenterology	IHC
Xue Li	27053362	Biol Reprod	WB,IF

Storage

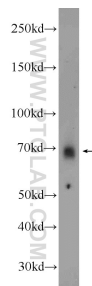
Storage:
Store at -20°C. Stable for one year after shipment.
Storage Buffer:
PBS with 0.02% sodium azide and 50% glycerol pH 7.3.
Aliquoting is unnecessary for -20°C storage

*** 20ul sizes contain 0.1% BSA

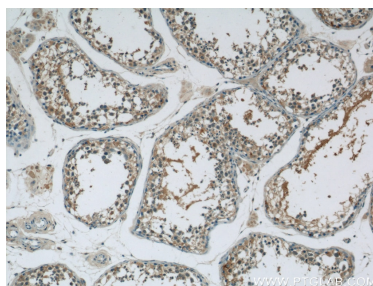
For technical support and original validation data for this product please contact:
T: 1 (888) 4PTGLAB (1-888-478-4522) (toll free in USA), or 1(312) 455-8498 (outside USA)
E: proteintech@ptglab.com
W: ptglab.com

This product is exclusively available under Proteintech Group brand and is not available to purchase from any other manufacturer.

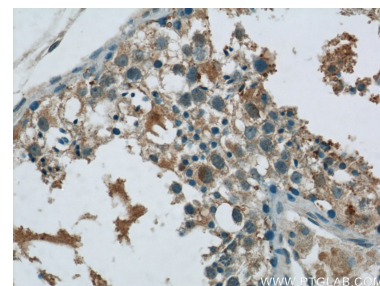
Selected Validation Data



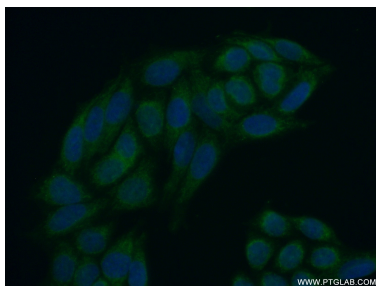
HeLa cells were subjected to SDS PAGE followed by western blot with 22882-1-AP (MEX3C antibody) at dilution of 1:1000 incubated at room temperature for 1.5 hours.



Immunohistochemical analysis of paraffin-embedded human testis tissue slide using 22882-1-AP (MEX3C Antibody) at dilution of 1:50 (under 10x lens).



Immunohistochemical analysis of paraffin-embedded human testis tissue slide using 22882-1-AP (MEX3C Antibody) at dilution of 1:50 (under 40x lens).



Immunofluorescent analysis of (10% Formaldehyde) fixed HeLa cells using 22882-1-AP (MEX3C antibody) at dilution of 1:50 and Alexa Fluor 488-conjugated AffiniPure Goat Anti-Rabbit IgG(H+L).