

For Research Use Only

# MYBPC1 Polyclonal antibody

Catalog Number: 22900-1-AP **3 Publications**



## Basic Information

<b>Catalog Number:</b> 22900-1-AP	<b>GenBank Accession Number:</b> NM_002465	<b>Purification Method:</b> Antigen affinity purification
<b>Size:</b> 150ul, Concentration: 500 µg/ml by Nanodrop and 347 µg/ml by Bradford method using BSA as the standard;	<b>GeneID (NCBI):</b> 4604	<b>Recommended Dilutions:</b> WB 1:500-1:2000 IHC 1:20-1:200
<b>Source:</b> Rabbit	<b>Full Name:</b> myosin binding protein C, slow type	
<b>Isotype:</b> IgG	<b>Calculated MW:</b> 128 kDa	
	<b>Observed MW:</b> 135-140 kDa	

## Applications

<b>Tested Applications:</b> IHC, WB, ELISA	<b>Positive Controls:</b>
<b>Cited Applications:</b> IHC, WB	<b>WB:</b> mouse skeletal muscle tissue, mouse pancreas tissue
<b>Species Specificity:</b> human, mouse, rat	<b>IHC:</b> human skeletal muscle tissue, human bladder tissue, human heart tissue
<b>Cited Species:</b> human, rat, mouse	
<b>Note-IHC: suggested antigen retrieval with TE buffer pH 9.0; (*) Alternatively, antigen retrieval may be performed with citrate buffer pH 6.0</b>	

## Background Information

MYBPC1, also named as MYBPCS, belongs to the immunoglobulin superfamily and MyBP family. It is a thick filament-associated protein located in the crossbridge region of vertebrate striated muscle a bands. In vitro it binds MHC, F-actin and native thin filaments, and modifies the activity of actin-activated myosin ATPase. It may modulate muscle contraction or may play a more structural role. This antibody is specific to MYBPC1.

## Notable Publications

Author	Pubmed ID	Journal	Application
Minjie Shen	33863995	Mol Psychiatry	IHC
Mangesh Morey	37401646	Adv Biol (Weinh)	IHC
I O Petrova	30168060	Dokl Biochem Biophys	WB

## Storage

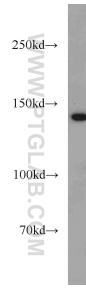
**Storage:**  
Store at -20°C. Stable for one year after shipment.  
**Storage Buffer:**  
PBS with 0.02% sodium azide and 50% glycerol pH 7.3.  
Aliquoting is unnecessary for -20°C storage

**\*\*\* 20ul sizes contain 0.1% BSA**

For technical support and original validation data for this product please contact:  
T: 1 (888) 4PTGLAB (1-888-478-4522) (toll free in USA), or 1(312) 455-8498 (outside USA)  
E: proteintech@ptglab.com  
W: ptglab.com

**This product is exclusively available under Proteintech Group brand and is not available to purchase from any other manufacturer.**

## Selected Validation Data



mouse skeletal muscle tissue were subjected to SDS PAGE followed by western blot with 22900-1-AP (MYBPC1 antibody) at dilution of 1:800 incubated at room temperature for 1.5 hours.



Immunohistochemical analysis of paraffin-embedded human skeletal muscle using 22900-1-AP (MYBPC1 antibody) at dilution of 1:50 (under 10x lens).



Immunohistochemical analysis of paraffin-embedded human skeletal muscle using 22900-1-AP (MYBPC1 antibody) at dilution of 1:50 (under 40x lens).