

For Research Use Only

# SHE Polyclonal antibody

Catalog Number: 22902-1-AP



## Basic Information

### Catalog Number:

22902-1-AP

### Size:

150ul, Concentration: 400 ug/ml by Nanodrop and 187 ug/ml by Bradford method using BSA as the standard;

### Source:

Rabbit

### Isotype:

IgG

### GenBank Accession Number:

NM\_001010846

### GeneID (NCBI):

126669

### UNIPROT ID:

Q5VZ18

### Full Name:

Src homology 2 domain containing E

### Calculated MW:

54 kDa

### Observed MW:

55 kDa

### Purification Method:

Antigen Affinity purified

### Recommended Dilutions:

WB 1:200-1:1000

IHC 1:50-1:500

IF/ICC 1:10-1:100

## Applications

### Tested Applications:

WB, IHC, IF/ICC, ELISA

### Species Specificity:

human, mouse

**Note-IHC: suggested antigen retrieval with TE buffer pH 9.0; (\*) Alternatively, antigen retrieval may be performed with citrate buffer pH 6.0**

### Positive Controls:

WB : mouse testis tissue,

IHC : human breast cancer tissue,

IF/ICC : HepG2 cells,

## Background Information

SHE, also known as SH2 domain-containing adapter protein E, is a 495 amino acid protein whose molecular weight is 54 kDa. The function of SHE remains unknown. This antibody specifically recognises the 54 kDa protein.

## Storage

### Storage:

Store at -20°C. Stable for one year after shipment.

### Storage Buffer:

PBS with 0.02% sodium azide and 50% glycerol pH 7.3.

Aliquoting is unnecessary for -20°C storage

\*\*\* 20ul sizes contain 0.1% BSA

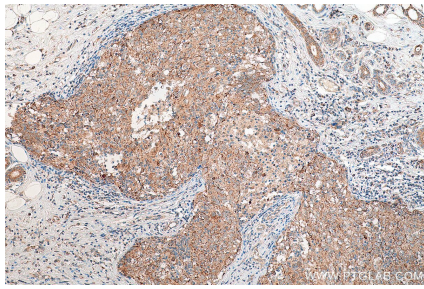
For technical support and original validation data for this product please contact:

T: 1 (888) 4PTGLAB (1-888-478-4522) (toll free in USA), or 1(312) 455-8498 (outside USA)

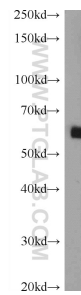
E: [proteintech@ptglab.com](mailto:proteintech@ptglab.com)  
W: [ptglab.com](http://ptglab.com)

This product is exclusively available under Proteintech Group brand and is not available to purchase from any other manufacturer.

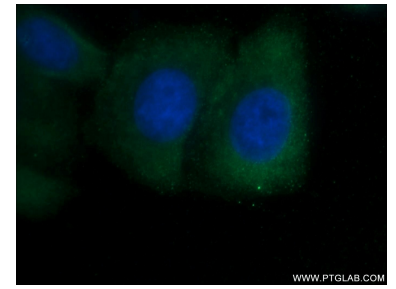
## Selected Validation Data



Immunohistochemical analysis of paraffin-embedded human breast cancer tissue slide using 22902-1-AP (SHE antibody) at dilution of 1:200 (under 10x lens). Heat mediated antigen retrieval with Tris-EDTA buffer (pH 9.0).



mouse testis tissue were subjected to SDS PAGE followed by western blot with 22902-1-AP (SHE Antibody) at dilution of 1:300 incubated at room temperature for 1.5 hours.



Immunofluorescent analysis of HepG2 cells using 22902-1-AP (SHE antibody) at dilution of 1:25 and Alexa Fluor 488-conjugated Goat Anti-Rabbit IgG(H+L).