

For Research Use Only

Nephrin Polyclonal antibody

Catalog Number: 22912-1-AP

5 Publications



Basic Information

Catalog Number:

22912-1-AP

Size:

150ul, Concentration: 450 ug/ml by Nanodrop;

Source:

Rabbit

Isotype:

IgG

Immunogen Catalog Number:

AG18994

GenBank Accession Number:

BC156935

GeneID (NCBI):

4868

UNIPROT ID:

O60500

Full Name:

nephrosis 1, congenital, Finnish type (nephrin)

Calculated MW:

1241 aa, 135 kDa

Observed MW:

120-130 kDa

Purification Method:

Antigen Affinity purified

Recommended Dilutions:

WB 1:1000-1:4000

IHC 1:1000-1:4000

Applications

Tested Applications:

WB, IHC, ELISA

Cited Applications:

WB, IHC, IF

Species Specificity:

human, mouse, rat

Cited Species:

human, mouse, rat

Note-IHC: suggested antigen retrieval with TE buffer pH 9.0; (*) Alternatively, antigen retrieval may be performed with citrate buffer pH 6.0

Positive Controls:

WB: mouse kidney tissue,

IHC: mouse kidney tissue, rat kidney tissue

Background Information

Podocytes are a major component of the glomerular blood filtration barrier. Podocyte protein Nephrin, also known as NPHS1, is the first to be identified as a central component of the slit diaphragm (SD), which is the podocyte cell-cell junction. Mutations in Nephrin lead to congenital nephrosis, such as steroid-resistant proteinuria and congenital nephrotic syndrome of the Finnish type (CNF).

Notable Publications

Author	Pubmed ID	Journal	Application
Yanhua Jin	39581215	Exp Cell Res	IF
Qing Ye	39199205	Antioxidants (Basel)	WB
Weixia Han	39066994	J Nephrol	IHC

Storage

Storage:

Store at -20°C. Stable for one year after shipment.

Storage Buffer:

PBS with 0.02% sodium azide and 50% glycerol

Aliquoting is unnecessary for -20°C storage

*** 20ul sizes contain 0.1% BSA

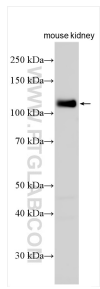
For technical support and original validation data for this product please contact:

T: 1 (888) 4PTGLAB (1-888-478-4522) (toll free in USA), or 1(312) 455-8498 (outside USA)

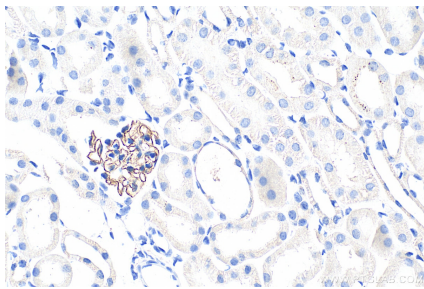
E: proteintech@ptglab.com
W: ptglab.com

This product is exclusively available under Proteintech Group brand and is not available to purchase from any other manufacturer.

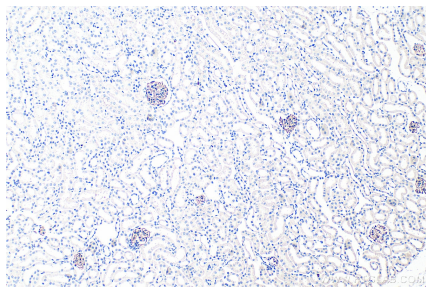
Selected Validation Data



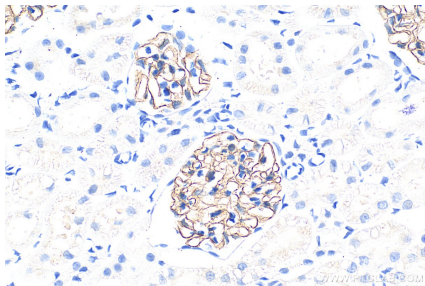
Mouse kidney tissues were subjected to SDS PAGE followed by western blot with 22912-1-AP (Nephrin antibody) at dilution of 1:2000 incubated at room temperature for 1.5 hours.



Immunohistochemical analysis of paraffin-embedded mouse kidney tissue slide using 22912-1-AP (Nephrin antibody) at dilution of 1:2000 (under 40x lens). Heat mediated antigen retrieval with Tris-EDTA buffer (pH 9.0).



Immunohistochemical analysis of paraffin-embedded mouse kidney tissue slide using 22912-1-AP (Nephrin antibody) at dilution of 1:2000 (under 10x lens). Heat mediated antigen retrieval with Tris-EDTA buffer (pH 9.0).



Immunohistochemical analysis of paraffin-embedded rat kidney tissue slide using 22912-1-AP (Nephrin antibody) at dilution of 1:2000 (under 40x lens). Heat mediated antigen retrieval with Tris-EDTA buffer (pH 9.0).