

For Research Use Only

BCL9 Polyclonal antibody

Catalog Number: 22947-1-AP

3 Publications



Basic Information

Catalog Number:

22947-1-AP

Size:

150ul, Concentration: 850 ug/ml by Nanodrop;

Source:

Rabbit

Isotype:

IgG

Immunogen Catalog Number:

AG19158

GenBank Accession Number:

BC116451

GeneID (NCBI):

607

UNIPROT ID:

O00512

Full Name:

B-cell CLL/lymphoma 9

Calculated MW:

1426 aa, 149 kDa

Observed MW:

149 kDa

Purification Method:

Antigen affinity purification

Recommended Dilutions:

WB 1:500-1:3000

IHC 1:20-1:200

IF/ICC 1:400-1:1600

Applications

Tested Applications:

WB, IHC, IF/ICC, ELISA

Cited Applications:

WB, IHC, IF, IP

Species Specificity:

human

Cited Species:

human, mouse

Note-IHC: suggested antigen retrieval with TE buffer pH 9.0; (*) Alternatively, antigen retrieval may be performed with citrate buffer pH 6.0

Positive Controls:

WB: COLO 320 cells, Jurkat cells, HEK-293 cells, HeLa cells, MCF-7 cells

IHC: human liver cancer tissue, human colon cancer tissue

IF/ICC: HeLa cells,

Background Information

BCL9 is associated with B-cell acute lymphoblastic leukemia. It may be a target of translocation in B-cell malignancies with abnormalities of 1q21. Its function is unknown. The overexpression of BCL9 may be of pathogenic significance in B-cell malignancies.

Notable Publications

Author	Pubmed ID	Journal	Application
Zesen Shang	31073027	J Biol Chem	WB,IF,IP
Xi Wang	35513844	Reprod Biol Endocrinol	WB,IHC
Yongxi Dong	36063753	Bioorg Chem	WB

Storage

Storage:

Store at -20°C. Stable for one year after shipment.

Storage Buffer:

PBS with 0.02% sodium azide and 50% glycerol pH 7.3.

Aliquoting is unnecessary for -20°C storage

*** 20ul sizes contain 0.1% BSA

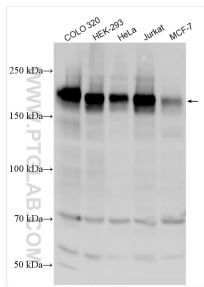
For technical support and original validation data for this product please contact:

T: 1 (888) 4PTGLAB (1-888-478-4522) (toll free in USA), or 1(312) 455-8498 (outside USA)

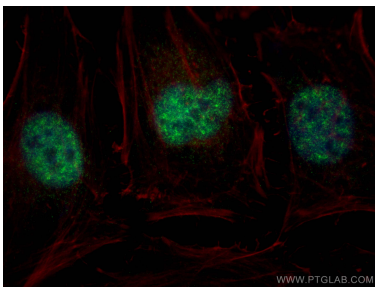
E: proteintech@ptglab.com
W: ptglab.com

This product is exclusively available under Proteintech Group brand and is not available to purchase from any other manufacturer.

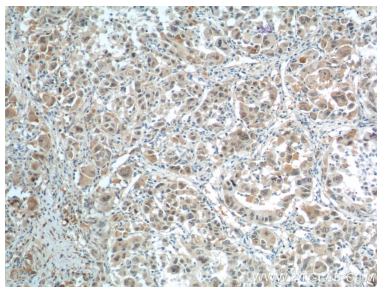
Selected Validation Data



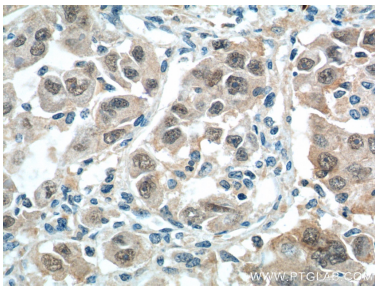
Various lysates were subjected to SDS PAGE followed by western blot with 22947-1-AP (BCL9 antibody) at dilution of 1:1500 incubated at room temperature for 1.5 hours.



Immunofluorescent analysis of (4% PFA) fixed HeLa cells using BCL9 antibody (22947-1-AP) at dilution of 1:800 and Multi-rAb Coralite® Plus 488-Goat Anti-Rabbit Recombinant Secondary Antibody (H+L) (RGAR002), CL594-phalloidin (red).



Immunohistochemical analysis of paraffin-embedded human liver cancer tissue slide using 22947-1-AP (BCL9 Antibody) at dilution of 1:200 (under 10x lens).



Immunohistochemical analysis of paraffin-embedded human liver cancer tissue slide using 22947-1-AP (BCL9 Antibody) at dilution of 1:200 (under 40x lens).