

For Research Use Only

GBP6 Polyclonal antibody

Catalog Number: 23001-1-AP

2 Publications



Basic Information

Catalog Number:

23001-1-AP

Size:

150ul, Concentration: 900 ug/ml by Nanodrop;

Source:

Rabbit

Isotype:

IgG

Immunogen Catalog Number:

AG19196

GenBank Accession Number:

BC131713

GeneID (NCBI):

163351

UNIPROT ID:

Q6ZN66

Full Name:

guanylate binding protein family, member 6

Calculated MW:

633 aa, 72 kDa

Observed MW:

70 kDa

Purification Method:

Antigen Affinity purified

Recommended Dilutions:

WB 1:1000-1:5000

IHC 1:20-1:200

Applications

Tested Applications:

WB, IHC, ELISA

Cited Applications:

WB

Species Specificity:

human

Cited Species:

human

Positive Controls:

WB : HeLa cells, MCF-7 cells

IHC : human testis tissue, human lung cancer tissue

Note-IHC: suggested antigen retrieval with TE buffer pH 9.0; (*) Alternatively, antigen retrieval may be performed with citrate buffer pH 6.0

Background Information

Guanylate-binding protein 6 (GBP6) is a member of the guanylate-binding protein family and is best known as a gene induced by interferon- γ signalling. Interferon- γ is produced predominantly by NK and T-cells, indicating that GBP6 is involved in host immune response (PMID: 28747659, 27029383). GBP6 has 2 isoforms with the molecular mass of 34 and 72 kDa.

Notable Publications

Author	Pubmed ID	Journal	Application
Kui Xiao	34714841	PLoS One	WB
Pei-Feng Liu	31707626	Clin Oral Investig	WB

Storage

Storage:

Store at -20°C. Stable for one year after shipment.

Storage Buffer:

PBS with 0.02% sodium azide and 50% glycerol pH 7.3.

Aliquoting is unnecessary for -20°C storage

*** 20ul sizes contain 0.1% BSA

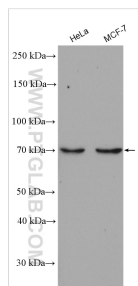
For technical support and original validation data for this product please contact:

T: 1 (888) 4PTGLAB (1-888-478-4522) (toll free in USA), or 1(312) 455-8498 (outside USA)

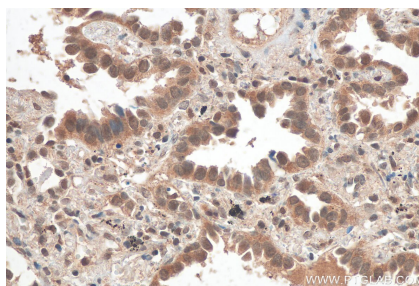
E: proteintech@ptglab.com
W: ptglab.com

This product is exclusively available under Proteintech Group brand and is not available to purchase from any other manufacturer.

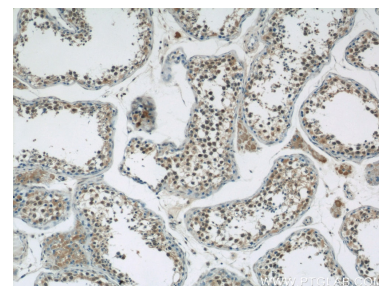
Selected Validation Data



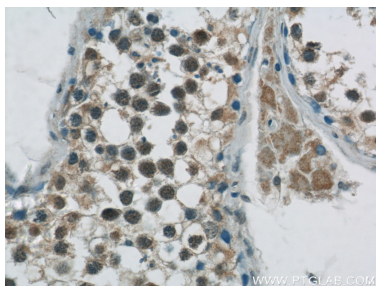
HeLa cells were subjected to SDS PAGE followed by western blot with 23001-1-AP (GBP6 antibody) at dilution of 1:2500 incubated at room temperature for 1.5 hours.



Immunohistochemical analysis of paraffin-embedded human lung cancer tissue slide using 23001-1-AP (GBP6 antibody) at dilution of 1:200 (under 40x lens). Heat mediated antigen retrieval with Tris-EDTA buffer (pH 9.0).



Immunohistochemical analysis of paraffin-embedded human testis tissue slide using 23001-1-AP (GBP6 Antibody) at dilution of 1:50 (under 10x lens).



Immunohistochemical analysis of paraffin-embedded human testis tissue slide using 23001-1-AP (GBP6 Antibody) at dilution of 1:50 (under 40x lens).