

For Research Use Only

SCP3 Polyclonal antibody

Catalog Number: 23024-1-AP **21 Publications**



Basic Information

Catalog Number: 23024-1-AP	GenBank Accession Number: BC062662	Purification Method: Antigen affinity purification
Size: 150ul , Concentration: 450 µg/ml by Nanodrop and 353 µg/ml by Bradford method using BSA as the standard;	GeneID (NCBI): 50511	Recommended Dilutions: WB 1:1000-1:4000 IP 0.5-4.0 ug for IP and 1:500-1:2000 for WB
Source: Rabbit	Full Name: synaptonemal complex protein 3	IF 1:50-1:500
Isotype: IgG	Calculated MW: 236 aa, 28 kDa	
Immunogen Catalog Number: AG19330	Observed MW: 30 kDa, 33 kDa	

Applications

Tested Applications: IF, IP, WB, ELISA	Positive Controls: WB : mouse testis tissue, HepG2 cells, rat testis tissue
Cited Applications: IF, IHC, WB	IP: mouse testis tissue,
Species Specificity: human, mouse, rat	IF: HepG2 cells,
Cited Species: human, rat, mouse	

Background Information

SYCP3 is an essential structural component of the synaptonemal complex. This complex is involved in synapsis, recombination and segregation of meiotic chromosomes. SYCP3 is required for centromere pairing during meiosis in male germ cells. SYCP3 is also required for normal meiosis during spermatogenesis and male fertility. Mutations in SYCP3 are associated with azoospermia in males and susceptibility to pregnancy loss in females.

Notable Publications

Author	Pubmed ID	Journal	Application
Nicholas Serra	30202948	Biol Reprod	IF
Ziqian Min	36444304	iScience	
Yang Fu	35658231	Biomed Pharmacother	WB

Storage

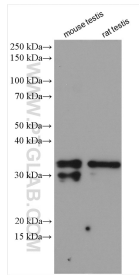
Storage:
Store at -20°C. Stable for one year after shipment.
Storage Buffer:
PBS with 0.02% sodium azide and 50% glycerol pH 7.3.
Aliquoting is unnecessary for -20°C storage

*** 20ul sizes contain 0.1% BSA

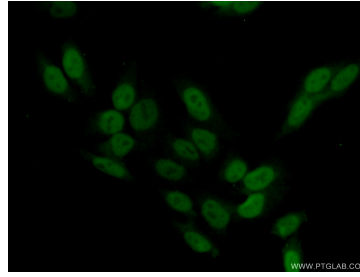
For technical support and original validation data for this product please contact:
T: 1 (888) 4PTGLAB (1-888-478-4522) (toll free in USA), or 1(312) 455-8498 (outside USA) E: proteintech@ptglab.com W: ptglab.com

This product is exclusively available under Proteintech Group brand and is not available to purchase from any other manufacturer.

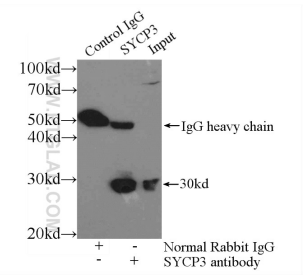
Selected Validation Data



Various lysates were subjected to SDS PAGE followed by western blot with 23024-1-AP (SCP3 antibody) at dilution of 1:2000 incubated at room temperature for 1.5 hours.



Immunofluorescent analysis of (10% Formaldehyde) fixed HepG2 cells using 23024-1-AP (SCP3 antibody) at dilution of 1:50 and Alexa Fluor 488-conjugated AffiniPure Goat Anti-Rabbit IgG(H+L).



IP Result of anti-SCP3 (IP:23024-1-AP, 3ug; Detection:23024-1-AP 1:1000) with mouse testis tissue lysate 4000ug.