

For Research Use Only

SUPT6H Polyclonal antibody

Catalog Number: 23073-1-AP

1 Publications



Basic Information

Catalog Number:

23073-1-AP

Size:

150ul, Concentration: 500 ug/ml by Nanodrop;

Source:

Rabbit

Isotype:

IgG

Immunogen Catalog Number:

AG19426

GenBank Accession Number:

BC136524

GeneID (NCBI):

6830

UNIPROT ID:

Q7KZ85

Full Name:

suppressor of Ty 6 homolog (S. cerevisiae)

Calculated MW:

1726 aa, 199 kDa

Observed MW:

230 kDa

Purification Method:

Antigen affinity purification

Recommended Dilutions:

WB 1:500-1:2000

IP 0.5-4.0 ug for 1.0-3.0 mg of total protein lysate

IHC 1:500-1:2000

Applications

Tested Applications:

WB, IHC, IP, ELISA

Cited Applications:

WB, IP

Species Specificity:

human

Cited Species:

human

Positive Controls:

WB : HeLa cells, HEK-293 cells, Jurkat cells

IP : HEK-293 cells,

IHC : human stomach cancer tissue,

Note-IHC: suggested antigen retrieval with TE buffer pH 9.0; (*) Alternatively, antigen retrieval may be performed with citrate buffer pH 6.0

Background Information

SUPT6H (suppressor of Ty6 homolog), also known as SPT6, SPT6H, Tat-CT2 (Tat-cotransactivator 2 protein) or emb-5 in C. elegans, is a 1,726 amino acid protein that is highly conserved from yeast to humans. Expressed ubiquitously, SUPT6H localizes to the nucleus and contains one SH2 domain and one S1 domain. SUPT6H participates in both DRB (5,6-dichloro-1-beta-D-ribofuranosylbenzimidazole)-mediated transcriptional inhibition as well as the enhancement of transcriptional elongation by the RNA polymerase II (Pol II). SUPT6H interacts with the nuclear proteins SPT4 and SPT5, which comprise the DSIF (DRB-sensitivity-inducing factor) complex that binds RNA polymerase II, and directly regulates elongation. Via its C-terminus, SUPT6H can also interact with Histone H3. Due to alternative splicing events, three isoforms exist for SUPT6H. This antibody specifically recognizes the 230kd phosphorylated SUPT6H protein.

Notable Publications

Author	Pubmed ID	Journal	Application
Roy Matkovic	35013187	Nat Commun	WB,IP

Storage

Storage:

Store at -20°C. Stable for one year after shipment.

Storage Buffer:

PBS with 0.02% sodium azide and 50% glycerol pH 7.3.

Aliquoting is unnecessary for -20°C storage

*** 20ul sizes contain 0.1% BSA

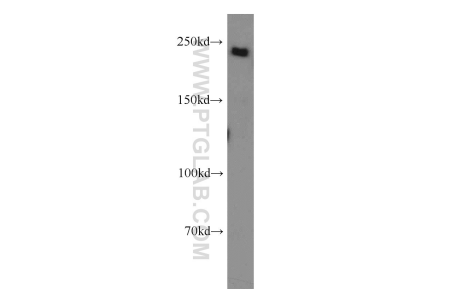
For technical support and original validation data for this product please contact:

T: 1 (888) 4PTGLAB (1-888-478-4522) (toll free in USA), or 1(312) 455-8498 (outside USA)

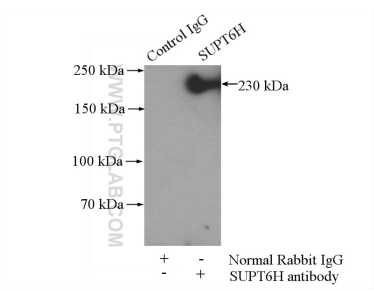
E: proteintech@ptglab.com
W: ptglab.com

This product is exclusively available under Proteintech Group brand and is not available to purchase from any other manufacturer.

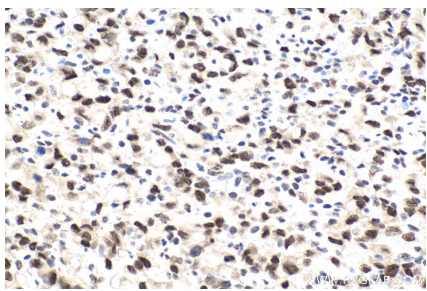
Selected Validation Data



HeLa cells were subjected to SDS PAGE followed by western blot with 23073-1-AP (SUPT6H antibody) at dilution of 1:1000 incubated at room temperature for 1.5 hours.



IP result of anti-SUPT6H (IP:23073-1-AP, 4ug; Detection:23073-1-AP 1:1000) with HEK-293 cells lysate 1200ug.



Immunohistochemical analysis of paraffin-embedded human stomach cancer tissue slide using 23073-1-AP (SUPT6H antibody) at dilution of 1:1000 (under 40x lens). Heat mediated antigen retrieval with Tris-EDTA buffer (pH 9.0).