

For Research Use Only

# Alpha Actin Polyclonal antibody

Catalog Number: 23082-1-AP

1 Publications



## Basic Information

### Catalog Number:

23082-1-AP

### Size:

150ul, Concentration: 500 ug/ml by Nanodrop and 233 ug/ml by Bradford method using BSA as the standard;

### Source:

Rabbit

### Isotype:

IgG

### Immunogen Catalog Number:

AG19482

### GenBank Accession Number:

BC009978

### GeneID (NCBI):

70

### UNIPROT ID:

P68032

### Full Name:

actin, alpha, cardiac muscle 1

### Calculated MW:

377 aa, 42 kDa

### Observed MW:

42-45 kDa

### Purification Method:

Antigen affinity purification

### Recommended Dilutions:

WB 1:500-1:2000

IHC 1:200-1:1000

## Applications

### Tested Applications:

WB, IHC, FC (Intra), ELISA

### Cited Applications:

WB

### Species Specificity:

human, mouse

**Note-IHC: suggested antigen retrieval with TE buffer pH 9.0; (\*) Alternatively, antigen retrieval may be performed with citrate buffer pH 6.0**

### Positive Controls:

WB : mouse heart tissue,

IHC : human normal colon, human colon tissue, human heart tissue, human skeletal muscle tissue, human small intestine tissue, mouse skeletal muscle tissue, mouse heart tissue, mouse colon tissue

## Notable Publications

Author	Pubmed ID	Journal	Application
Hideshi Okada	25466765	Circ Heart Fail	WB

## Storage

### Storage:

Store at -20°C. Stable for one year after shipment.

### Storage Buffer:

PBS with 0.02% sodium azide and 50% glycerol pH 7.3.

Aliquoting is unnecessary for -20°C storage

\*\*\* 20ul sizes contain 0.1% BSA

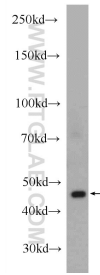
For technical support and original validation data for this product please contact:

T: 1 (888) 4PTGLAB (1-888-478-4522) (toll free in USA), or 1(312) 455-8498 (outside USA)

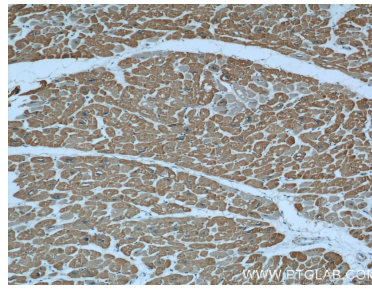
E: [proteintech@ptglab.com](mailto:proteintech@ptglab.com)  
W: [ptglab.com](http://ptglab.com)

This product is exclusively available under Proteintech Group brand and is not available to purchase from any other manufacturer.

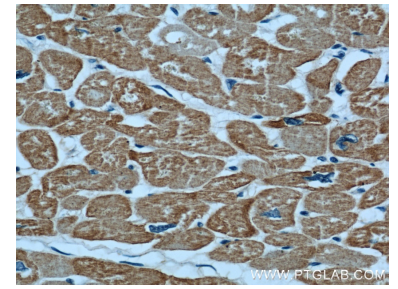
## Selected Validation Data



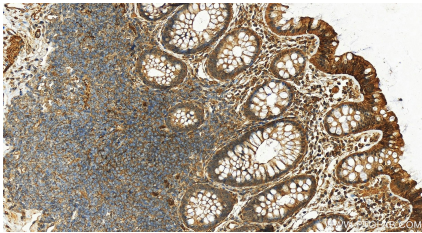
mouse heart tissue were subjected to SDS PAGE followed by western blot with 23082-1-AP (alpha Actin antibody at dilution of 1:1000 incubated at room temperature for 1.5 hours.



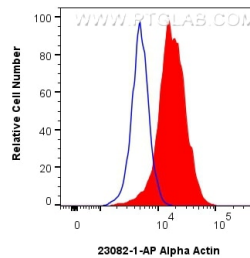
Immunohistochemical analysis of paraffin-embedded human heart using 23082-1-AP (alpha Actin antibody) at dilution of 1:100 (under 10x lens).



Immunohistochemical analysis of paraffin-embedded human heart using 23082-1-AP (alpha Actin antibody) at dilution of 1:100 (under 40x lens).



Immunohistochemical analysis of paraffin-embedded human colon tissue slide using 23082-1-AP (Alpha Actin antibody) at dilution of 1:200 (under 20x lens). Heat mediated antigen retrieval with Tris-EDTA buffer (pH 9.0).



$1 \times 10^6$  C2C12 cells were intracellularly stained with 0.4 ug Alpha Actin Polyclonal antibody (23082-1-AP) and CoraLite®488-Conjugated Goat Anti-Rabbit IgG(H+L) (SA00013-2)(red), or 0.4 ug Rabbit IgG control Rabbit PolyAb (30000-O-AP) (blue). Cells were fixed with 4% PFA and permeabilized with Flow Cytometry Perm Buffer (PF00011-C).