

For Research Use Only

LRRTM2 Polyclonal antibody

Catalog Number: 23094-1-AP

1 Publications



Basic Information

Catalog Number:

23094-1-AP

Size:

150ul, Concentration: 450 ug/ml by Nanodrop and 333 ug/ml by Bradford method using BSA as the standard;

Source:

Rabbit

Isotype:

IgG

Immunogen Catalog Number:

AG19422

GenBank Accession Number:

BC126408

GeneID (NCBI):

26045

UNIPROT ID:

O43300

Full Name:

leucine rich repeat transmembrane neuronal 2

Calculated MW:

516 aa, 59 kDa

Observed MW:

59 kDa

Purification Method:

Antigen Affinity purified

Recommended Dilutions:

WB 1:500-1:1000

Applications

Tested Applications:

WB, ELISA

Cited Applications:

IP

Species Specificity:

human, mouse

Cited Species:

human

Positive Controls:

WB: mouse spinal cord tissue,

Background Information

Leucine-rich repeat transmembrane proteins (LRRTMs) are synaptic cell adhesion molecules. LRRTMs are highly localized in the postsynaptic density and play various roles in the formation, maturation, and function of synapses (PMID: 25951919). LRRTM2 acts as a post-synaptic ligand of Neurexins. LRRTM2 regulates excitatory synapse development and function in the vertebrate nervous system (PMID: 20064387).

Notable Publications

Author	Pubmed ID	Journal	Application
Astrid Kollwe	34766907	Elife	IP

Storage

Storage:

Store at -20°C. Stable for one year after shipment.

Storage Buffer:

PBS with 0.02% sodium azide and 50% glycerol pH 7.3.

Aliquoting is unnecessary for -20°C storage

*** 20ul sizes contain 0.1% BSA

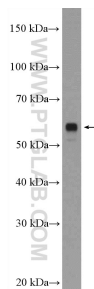
For technical support and original validation data for this product please contact:

T: 1 (888) 4PTGLAB (1-888-478-4522) (toll free in USA), or 1(312) 455-8498 (outside USA)

E: proteintech@ptglab.com
W: ptglab.com

This product is exclusively available under Proteintech Group brand and is not available to purchase from any other manufacturer.

Selected Validation Data



mouse spinal cord tissue were subjected to SDS PAGE followed by western blot with 23094-1-AP (LRRTM2 Antibody) at dilution of 1:600 incubated at room temperature for 1.5 hours.