

For Research Use Only

BEND3 Polyclonal antibody

Catalog Number: 23101-1-AP



Basic Information

Catalog Number: 23101-1-AP	GenBank Accession Number: BC131628	Purification Method: Antigen Affinity purified
Size: 150ul , Concentration: 500 ug/ml by Nanodrop and 300 ug/ml by Bradford method using BSA as the standard;	GeneID (NCBI): 57673	Recommended Dilutions: WB 1:500-1:2000
Source: Rabbit	UNIPROT ID: Q5T5X7	IHC 1:50-1:500
Isotype: IgG	Full Name: BEN domain containing 3	IF/ICC 1:400-1:1600
Immunogen Catalog Number: AG19137	Calculated MW: 828 aa, 94 kDa	
	Observed MW: 94 kDa	

Applications

Tested Applications: WB, IHC, IF/ICC, ELISA	Positive Controls:
Species Specificity: human	WB : HEK-293 cells,
Note-IHC: suggested antigen retrieval with TE buffer pH 9.0; (*) Alternatively, antigen retrieval may be performed with citrate buffer pH 6.0	IHC : human liver cancer tissue,
	IF/ICC : HEK-293 cells,

Background Information

BEND3 is a quadruple BEN domain-containing protein that associates with heterochromatin and functions as a transcriptional repressor. BEND3 is highly expressed in pluripotent cells, and the induction of differentiation results in the down-regulation of BEND3. (PMID: 35217604, PMID: 25600804)

Storage

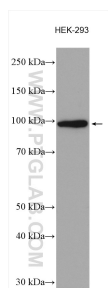
Storage:
Store at -20°C. Stable for one year after shipment.
Storage Buffer:
PBS with 0.02% sodium azide and 50% glycerol pH 7.3.
Aliquoting is unnecessary for -20°C storage

*** 20ul sizes contain 0.1% BSA

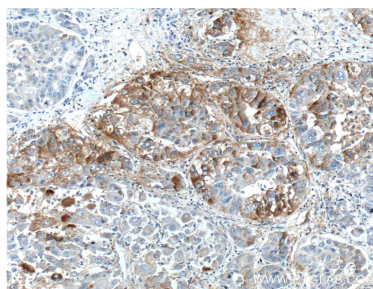
For technical support and original validation data for this product please contact:
T: 1 (888) 4PTGLAB (1-888-478-4522) (toll free in USA), or 1(312) 455-8498 (outside USA)
E: proteintech@ptglab.com
W: ptglab.com

This product is exclusively available under Proteintech Group brand and is not available to purchase from any other manufacturer.

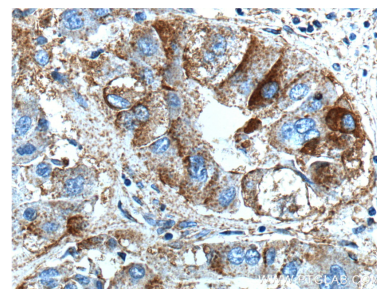
Selected Validation Data



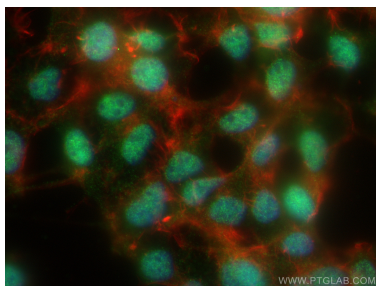
HEK-293 cells were subjected to SDS PAGE followed by western blot with 23101-1-AP (BEND3 antibody) at dilution of 1:1000 incubated at room temperature for 1.5 hours.



Immunohistochemical analysis of paraffin-embedded human liver cancer tissue slide using 23101-1-AP (BEND3 Antibody) at dilution of 1:200 (under 10x lens).



Immunohistochemical analysis of paraffin-embedded human liver cancer tissue slide using 23101-1-AP (BEND3 Antibody) at dilution of 1:200 (under 40x lens).



Immunofluorescent analysis of (4% PFA) fixed HEK-293 cells using BEND3 antibody (23101-1-AP) at dilution of 1:800 and CoraLite®488-Conjugated AffiniPure Goat Anti-Rabbit IgG(H+L), CL594-phalloidin (red).