

For Research Use Only

# WDR36 Polyclonal antibody

Catalog Number: 23126-1-AP



## Basic Information

**Catalog Number:**

23126-1-AP

**Size:**

150ul , Concentration: 400 ug/ml by Nanodrop and 227 ug/ml by Bradford method using BSA as the standard;

**Source:**

Rabbit

**Isotype:**

IgG

**Immunogen Catalog Number:**

AG19425

**GenBank Accession Number:**

BC136517

**GeneID (NCBI):**

134430

**UNIPROT ID:**

Q8NI36

**Full Name:**

WD repeat domain 36

**Calculated MW:**

951 aa, 105 kDa

**Observed MW:**

99-105 kDa

**Purification Method:**

Antigen Affinity purified

**Recommended Dilutions:**

WB 1:5000-1:50000

IP 0.5-4.0 ug for 1.0-3.0 mg of total protein lysate

## Applications

**Tested Applications:**

WB, IP, ELISA

**Species Specificity:**

human, mouse

**Positive Controls:**

WB : HEK-293 cells, L02 cells

IP : mouse liver tissue,

## Storage

**Storage:**

Store at -20°C. Stable for one year after shipment.

**Storage Buffer:**

PBS with 0.02% sodium azide and 50% glycerol pH 7.3.

Aliquoting is unnecessary for -20°C storage

\*\*\* 20ul sizes contain 0.1% BSA

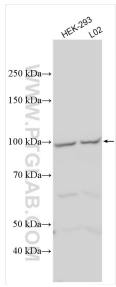
For technical support and original validation data for this product please contact:

T: 1 (888) 4PTGLAB (1-888-478-4522) (toll free in USA), or 1(312) 455-8498 (outside USA)

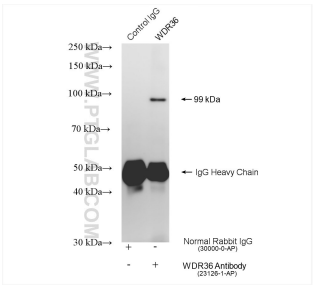
E: [proteintech@ptglab.com](mailto:proteintech@ptglab.com)  
W: [ptglab.com](http://ptglab.com)

This product is exclusively available under Proteintech Group brand and is not available to purchase from any other manufacturer.

## Selected Validation Data



Various lysates were subjected to SDS PAGE followed by western blot with 23126-1-AP (WDR36 antibody) at dilution of 1:10000 incubated at room temperature for 1.5 hours.



IP result of anti-WDR36 (IP:23126-1-AP, 4ug; Detection:23126-1-AP 1:500) with mouse liver tissue lysate 1840 ug.