

For Research Use Only

REEP3 Polyclonal antibody

Catalog Number: 23140-1-AP



Basic Information

Catalog Number: 23140-1-AP	GenBank Accession Number: BC068557	Purification Method: Antigen affinity purification
Size: 150ul , Concentration: 410 ug/ml by Nanodrop;	GeneID (NCBI): 221035	Recommended Dilutions: WB: 1:1000-1:4000
Source: Rabbit	UNIPROT ID: Q6NUK4	
Isotype: IgG	Full Name: receptor accessory protein 3	
Immunogen Catalog Number: AG19400	Calculated MW: 255 aa, 29 kDa	
	Observed MW: 29 kDa	

Applications

Tested Applications: WB, ELISA	Positive Controls: WB : HeLa cells, L02 cells, MCF-7 cells
Species Specificity: human	

Background Information

REEP3 (Receptor Expression-Enhancing Protein 3) is a member of the REEP family of proteins, a transmembrane protein that interacts with odorant receptor proteins and may enhance the odorant receptor responses to odorants. It primarily regulates the tubular morphology of the endoplasmic reticulum by promoting high membrane curvature through its reticular homology domains. During mitosis, REEP3 binds to microtubules, separating the endoplasmic reticulum from chromosomes to ensure proper nuclear membrane remodeling and cell division.(PMID: 23911198; 30995177)

Storage

Storage:
Store at -20°C. Stable for one year after shipment.
Storage Buffer:
PBS with 0.02% sodium azide and 50% glycerol, pH7.3
Aliquoting is unnecessary for -20°C storage

*** 20ul sizes contain 0.1% BSA

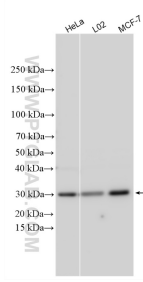
For technical support and original validation data for this product please contact:

T: 1 (888) 4PTGLAB (1-888-478-4522) (toll free in USA), or 1(312) 455-8498 (outside USA)

E: proteintech@ptglab.com
W: ptglab.com

This product is exclusively available under Proteintech Group brand and is not available to purchase from any other manufacturer.

Selected Validation Data



Various lysates were subjected to SDS PAGE followed by western blot with 23140-1-AP (REEP3 antibody) at dilution of 1:2000 incubated at room temperature for 1.5 hours.