

For Research Use Only

# GOLPH3L Polyclonal antibody

Catalog Number: 23153-1-AP



## Basic Information

<b>Catalog Number:</b> 23153-1-AP	<b>GenBank Accession Number:</b> BC013870	<b>Purification Method:</b> Antigen affinity purification
<b>Size:</b> 150ul , Concentration: 500 ug/ml by Nanodrop;	<b>GeneID (NCBI):</b> 55204	<b>Recommended Dilutions:</b> WB 1:1000-1:8000 IHC 1:200-1:800
<b>Source:</b> Rabbit	<b>UNIPROT ID:</b> Q9H4A5	
<b>Isotype:</b> IgG	<b>Full Name:</b> golgi phosphoprotein 3-like	
<b>Immunogen Catalog Number:</b> AG19537	<b>Calculated MW:</b> 285 aa, 33 kDa	
	<b>Observed MW:</b> 33 kDa	

## Applications

<b>Tested Applications:</b> WB, IHC, ELISA	<b>Positive Controls:</b>
<b>Species Specificity:</b> human	<b>WB :</b> MCF-7 cells, SK-BR-3 cells, T-47D cells
<b>Note-IHC:</b> suggested antigen retrieval with <b>TE buffer pH 9.0; (*) Alternatively, antigen retrieval may be performed with citrate buffer pH 6.0</b>	<b>IHC :</b> human cervical cancer tissue,

## Background Information

Golgi phosphoprotein 3 (GOLPH3) is a highly conserved membrane protein that plays an important role in maintaining the structure of the Golgi apparatus and anterograde transport. GOLPH3L(golgi phosphoprotein 3-like) is a GOLPH3 paralogue found in all vertebrate genomes. Compared with the oncogene GOLPH3, little is known about the role and function of GOLPH3L. It has been reported that GOLPH3L is highly expressed in epithelial ovarian cancer tissues, and cervical cancer tissue and is up-regulated in human rhabdomyosarcoma (PMID: 26284141; 28261346; 21822541).

## Storage

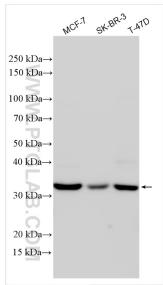
**Storage:**  
Store at -20°C. Stable for one year after shipment.  
**Storage Buffer:**  
PBS with 0.02% sodium azide and 50% glycerol pH 7.3.  
**Aliquoting is unnecessary for -20°C storage**

\*\*\* 20ul sizes contain 0.1% BSA

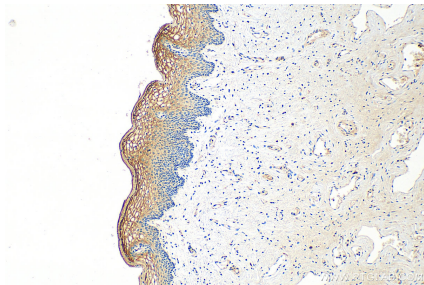
For technical support and original validation data for this product please contact:  
T: 1 (888) 4PTGLAB (1-888-478-4522) (toll free in USA), or 1(312) 455-8498 (outside USA)  
E: [proteintech@ptglab.com](mailto:proteintech@ptglab.com)  
W: [ptglab.com](http://ptglab.com)

This product is exclusively available under Proteintech Group brand and is not available to purchase from any other manufacturer.

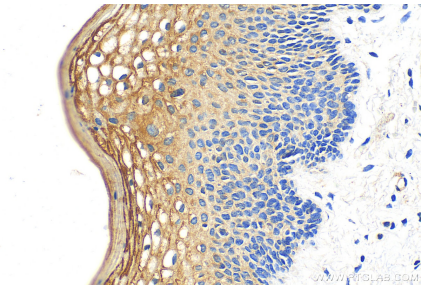
Selected Validation Data



Various lysates were subjected to SDS PAGE followed by western blot with 23153-1-AP (GOLPH3L antibody) at dilution of 1:4000 incubated at room temperature for 1.5 hours.



Immunohistochemical analysis of paraffin-embedded human cervical cancer tissue slide using 23153-1-AP (GOLPH3L antibody) at dilution of 1:400 (under 10x lens). Heat mediated antigen retrieval with Tris-EDTA buffer (pH 9.0).



Immunohistochemical analysis of paraffin-embedded human cervical cancer tissue slide using 23153-1-AP (GOLPH3L antibody) at dilution of 1:400 (under 40x lens). Heat mediated antigen retrieval with Tris-EDTA buffer (pH 9.0).