

For Research Use Only

ZFYVE19 Polyclonal antibody

Catalog Number: 23163-1-AP



Basic Information

Catalog Number: 23163-1-AP	GenBank Accession Number: BC015738	Purification Method: Antigen affinity purification
Size: 150ul , Concentration: 1000 µg/ml by Nanodrop and 653 µg/ml by Bradford method using BSA as the standard;	GeneID (NCBI): 84936	Recommended Dilutions: WB 1:1000-1:4000 IP 0.5-4.0 ug for IP and 1:1000-1:4000 for WB
Source: Rabbit	Full Name: zinc finger, FYVE domain containing 19	IHC 1:20-1:200
Isotype: IgG	Calculated MW: 471 aa, 52 kDa	
Immunogen Catalog Number: AG19593	Observed MW: 52 kDa	

Applications

Tested Applications: IHC, IP, WB, ELISA	Positive Controls:
Species Specificity: human	WB : HeLa cells, Raji cells
Note-IHC: suggested antigen retrieval with TE buffer pH 9.0; (*) Alternatively, antigen retrieval may be performed with citrate buffer pH 6.0	IP : Raji cells,
	IHC : human heart tissue, human liver cancer tissue

Background Information

Storage

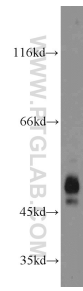
Storage:
Store at -20°C. Stable for one year after shipment.
Storage Buffer:
PBS with 0.02% sodium azide and 50% glycerol pH 7.3.
Aliquoting is unnecessary for -20°C storage

*** 20ul sizes contain 0.1% BSA

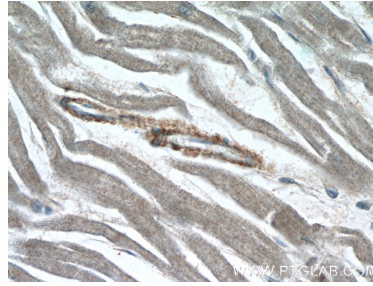
For technical support and original validation data for this product please contact:
T: 1 (888) 4PTGLAB (1-888-478-4522) (toll free in USA), or 1(312) 455-8498 (outside USA) E: proteintech@ptglab.com
W: ptglab.com

This product is exclusively available under Proteintech Group brand and is not available to purchase from any other manufacturer.

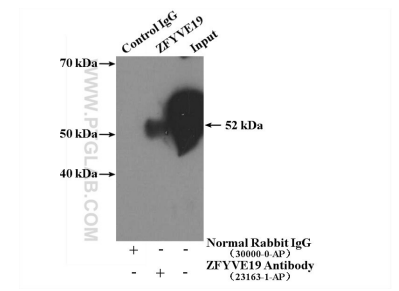
Selected Validation Data



HeLa cells were subjected to SDS PAGE followed by western blot with 23163-1-AP (ZFYVE19 antibody) at dilution of 1:2000 incubated at room temperature for 1.5 hours.



Immunohistochemical analysis of paraffin-embedded human heart slide using 23163-1-AP (ZFYVE19 Antibody) at dilution of 1:50.



IP Result of anti-ZFYVE19 (IP:23163-1-AP, 4ug; Detection:23163-1-AP 1:2000) with Raji cells lysate 3880ug.