

For Research Use Only

MMADHC Polyclonal antibody

Catalog Number: 23191-1-AP



Basic Information

Catalog Number: 23191-1-AP	GenBank Accession Number: BC022859	Purification Method: Antigen affinity purification
Size: 150ul , Concentration: 450 µg/ml by Nanodrop and 333 µg/ml by Bradford method using BSA as the standard;	GeneID (NCBI): 27249	Recommended Dilutions: WB 1:1000-1:5000 IHC 1:50-1:500
Source: Rabbit	Full Name: methylmalonic aciduria (cobalamin deficiency) cblD type, with homocystinuria	
Isotype: IgG	Calculated MW: 296 aa, 33 kDa	
Immunogen Catalog Number: AG19343	Observed MW: 33 kDa	

Applications

Tested Applications:

IHC, WB, ELISA

Species Specificity:

human, mouse

Note-IHC: suggested antigen retrieval with TE buffer pH 9.0; (*) Alternatively, antigen retrieval may be performed with citrate buffer pH 6.0

Positive Controls:

WB : HEK-293 cells, HeLa cells, MCF-7 cells, NIH3T3 cells

IHC : human skeletal muscle tissue, human heart tissue, human pancreas tissue

Background Information

MMADHC is a mitochondrial protein that is involved in an early step of vitamin B12 metabolism. Vitamin B12 (cobalamin) is essential for normal development and survival in humans. MMADHC is a 296-amino acids (32.9 kDa) protein with an N-terminal disordered region (amino acids 1-107) containing a potential mitochondrial leader sequence (MLS; amino acids 1-12), and a C-terminal Nitro Reductase-like domain (NTR; amino acids 108-296). Mutations in this gene cause methylmalonic aciduria and homocystinuria type cblD (MMADHC), a disorder of cobalamin metabolism that is characterized by decreased levels of the coenzymes adenosylcobalamin and methylcobalamin.

Storage

Storage:

Store at -20°C. Stable for one year after shipment.

Storage Buffer:

PBS with 0.02% sodium azide and 50% glycerol pH 7.3.

Aliquoting is unnecessary for -20°C storage

***** 20ul sizes contain 0.1% BSA**

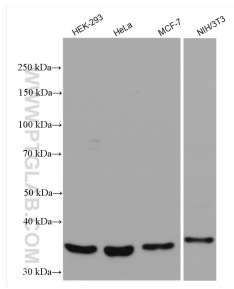
For technical support and original validation data for this product please contact:

T: 1 (888) 4PTGLAB (1-888-478-4522) (toll free in USA), or 1(312) 455-8498 (outside USA)

E: proteintech@ptglab.com
W: ptglab.com

This product is exclusively available under Proteintech Group brand and is not available to purchase from any other manufacturer.

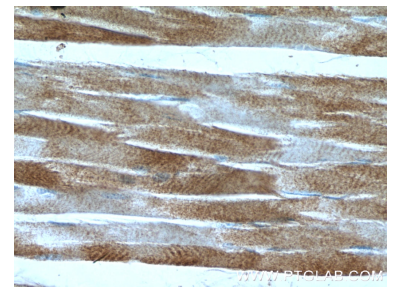
Selected Validation Data



Various lysates were subjected to SDS PAGE followed by western blot with 23191-1-AP (MMADHC antibody) at dilution of 1:2500 incubated at room temperature for 1.5 hours.



Immunohistochemical analysis of paraffin-embedded human skeletal muscle tissue slide using 23191-1-AP (MMADHC Antibody) at dilution of 1:200 (under 10x lens).



Immunohistochemical analysis of paraffin-embedded human skeletal muscle tissue slide using 23191-1-AP (MMADHC Antibody) at dilution of 1:200 (under 40x lens).