

For Research Use Only

KCTD8 Polyclonal antibody

Catalog Number: 23197-1-AP



Basic Information

Catalog Number:

23197-1-AP

Size:

150ul , Concentration: 900 ug/ml by Nanodrop and 453 ug/ml by Bradford method using BSA as the standard;

Source:

Rabbit

Isotype:

IgG

Immunogen Catalog Number:

AG19555

GenBank Accession Number:

BC136793

GeneID (NCBI):

386617

UNIPROT ID:

Q6ZWB6

Full Name:

potassium channel tetramerisation domain containing 8

Calculated MW:

473 aa, 52 kDa

Observed MW:

52 kDa

Purification Method:

Antigen affinity purification

Recommended Dilutions:

WB 1:1000-1:6000

Applications

Tested Applications:

WB, ELISA

Species Specificity:

human

Positive Controls:

WB : human placenta tissue,

Background Information

GABA-B receptors are G protein-coupled receptors for gamma-aminobutyric acid (GABA). KCTD8 appears to function as an auxiliary GABA-B receptor subunit that may influence the biophysical and/or pharmacologic properties of the receptor response.

Storage

Storage:

Store at -20°C. Stable for one year after shipment.

Storage Buffer:

PBS with 0.02% sodium azide and 50% glycerol pH 7.3.

Aliquoting is unnecessary for -20°C storage

*** 20ul sizes contain 0.1% BSA

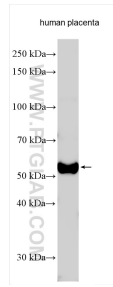
For technical support and original validation data for this product please contact:

T: 1 (888) 4PTGLAB (1-888-478-4522) (toll free in USA), or 1(312) 455-8498 (outside USA)

E: proteintech@ptglab.com
W: ptglab.com

This product is exclusively available under Proteintech Group brand and is not available to purchase from any other manufacturer.

Selected Validation Data



Human placenta tissue were subjected to SDS PAGE followed by western blot with 23197-1-AP (KCTD8 antibody) at dilution of 1:3000 incubated at room temperature for 1.5 hours.