

For Research Use Only

CIP2A Polyclonal antibody

Catalog Number: 23199-1-AP

Featured Product

2 Publications



Basic Information

Catalog Number:

23199-1-AP

Size:

150ul, Concentration: 350 ug/ml by Nanodrop;

Source:

Rabbit

Isotype:

IgG

Immunogen Catalog Number:

AG19598

GenBank Accession Number:

BC130564

GeneID (NCBI):

57650

UNIPROT ID:

Q8TCG1

Full Name:

KIAA1524

Calculated MW:

905 aa, 102 kDa

Observed MW:

80-102 kDa

Purification Method:

Antigen Affinity purified

Recommended Dilutions:

WB 1:500-1:2000

IHC 1:50-1:500

Applications

Tested Applications:

WB, IHC, ELISA

Cited Applications:

WB, IF

Species Specificity:

human

Cited Species:

human

Positive Controls:

WB : A549 cells, HEK-293 cells, U2OS cells

IHC : human lung cancer tissue, human breast cancer tissue

Note-IHC: suggested antigen retrieval with TE buffer pH 9.0; (*) Alternatively, antigen retrieval may be performed with citrate buffer pH 6.0

Background Information

Cancerous inhibitor of protein phosphatase 2A (CIP2A) was originally identified as a cellular protein phosphatase 2A (PP2A) inhibitor, and has been shown to control oncogenic cellular signals by suppressing the tumor suppressor PP2A. CIP2A overexpression has been found in several human malignancies including breast cancer, hepatocellular carcinoma, gastric cancer, head and neck cancer, colon cancer, prostate cancer and non-small cell lung cancer. CIP2A is a 83-102 kDa cytoplasmic protein. (PMID: 26824320, PMID: 25458953, PMID: 29720672)

Notable Publications

Author	Pubmed ID	Journal	Application
Zhenxing Liu	38734318	Biochim Biophys Acta Mol Basis Dis	WB,IF
Yu-Yan Chen	39188277	Smart Med	WB

Storage

Storage:

Store at -20°C. Stable for one year after shipment.

Storage Buffer:

PBS with 0.02% sodium azide and 50% glycerol pH 7.3.

Aliquoting is unnecessary for -20°C storage

*** 20ul sizes contain 0.1% BSA

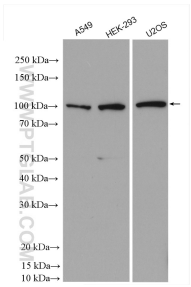
For technical support and original validation data for this product please contact:

T: 1 (888) 4PTGLAB (1-888-478-4522) (toll free in USA), or 1(312) 455-8498 (outside USA)

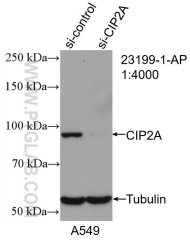
E: proteintech@ptglab.com
W: ptglab.com

This product is exclusively available under Proteintech Group brand and is not available to purchase from any other manufacturer.

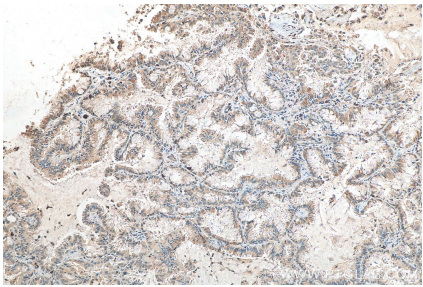
Selected Validation Data



Various lysates were subjected to SDS PAGE followed by western blot with 23199-1-AP (KIAA1524 antibody) at dilution of 1:1000 incubated at room temperature for 1.5 hours.



WB result of CIP2A antibody (23199-1-AP; 1:4000; incubated at room temperature for 1.5 hours) with sh-Control and sh-CIP2A transfected A549 cells.



Immunohistochemical analysis of paraffin-embedded human lung cancer tissue slide using 23199-1-AP (CIP2A antibody) at dilution of 1:200 (under 10x lens). Heat mediated antigen retrieval with Tris-EDTA buffer (pH 9.0).