

For Research Use Only

# Claspin Polyclonal antibody

Catalog Number: 23206-1-AP

3 Publications



## Basic Information

### Catalog Number:

23206-1-AP

### Size:

150ul, Concentration: 500 ug/ml by Nanodrop and 293 ug/ml by Bradford method using BSA as the standard;

### Source:

Rabbit

### Isotype:

IgG

### Immunogen Catalog Number:

AG19637

### GenBank Accession Number:

BC137279

### GeneID (NCBI):

63967

### UNIPROT ID:

Q9HAW4

### Full Name:

claspin homolog (Xenopus laevis)

### Calculated MW:

1339 aa, 151 kDa

### Observed MW:

240 kDa

### Purification Method:

Antigen affinity purification

### Recommended Dilutions:

WB 1:200-1:1000

IP 0.5-4.0 ug for 1.0-3.0 mg of total protein lysate

IHC 1:50-1:500

IF/ICC 1:20-1:200

## Applications

### Tested Applications:

WB, IF/ICC, IP, ELISA

### Cited Applications:

WB

### Species Specificity:

human

### Cited Species:

human

### Positive Controls:

WB : HEK-293 cells,

IP : HEK-293 cells,

IHC : human stomach cancer tissue,

IF/ICC : HepG2 cells, HeLa cells

**Note-IHC: suggested antigen retrieval with TE buffer pH 9.0; (\*) Alternatively, antigen retrieval may be performed with citrate buffer pH 6.0**

## Background Information

CLSPN, also named as Claspin, is a 1339 amino acid protein, which belongs to the claspin family. CLSPN localizes in the nucleus and is highly expressed at S/G2 phases of the cell cycle. CLSPN is required for checkpoint mediated cell cycle arrest in response to inhibition of DNA replication or to DNA damage induced by both ionizing and UV irradiation. CLSPN plays a potentially critical role in replication checkpoint control in cells and mediating phosphorylation and activation of checkpoint protein kinases. The calculated molecular weight of CLSPN is 151 kDa, but the modified protein is about 220-240 kDa.

## Notable Publications

Author	Pubmed ID	Journal	Application
Chao Wang	28350092	Int J Oncol	WB
Uma Thanigai Arasu	31820036	Cell Mol Life Sci	WB
Rong Luo	39148723	Cell Insight	WB

## Storage

### Storage:

Store at -20°C. Stable for one year after shipment.

### Storage Buffer:

PBS with 0.02% sodium azide and 50% glycerol pH 7.3.

Aliquoting is unnecessary for -20°C storage

\*\*\* 20ul sizes contain 0.1% BSA

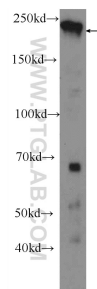
For technical support and original validation data for this product please contact:

T: 1 (888) 4PTGLAB (1-888-478-4522) (toll free in USA), or 1(312) 455-8498 (outside USA)

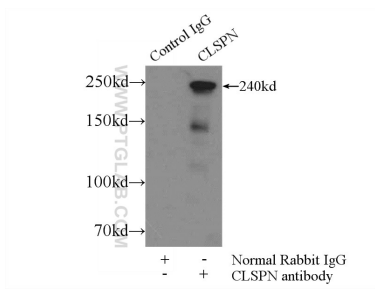
E: [proteintech@ptglab.com](mailto:proteintech@ptglab.com)  
W: [ptglab.com](http://ptglab.com)

This product is exclusively available under Proteintech Group brand and is not available to purchase from any other manufacturer.

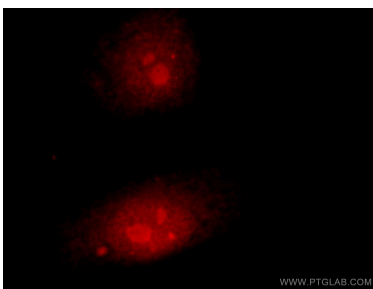
## Selected Validation Data



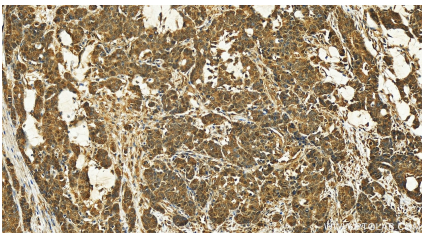
HEK-293 cells were subjected to SDS PAGE followed by western blot with 23206-1-AP (Claspin antibody at dilution of 1:300 incubated at room temperature for 1.5 hours.



IP result of anti-Claspin (IP:23206-1-AP, 5ug; Detection:23206-1-AP 1:1000) with HEK-293 cells lysate 2400ug.



Immunofluorescent analysis of HepG2 cells using 23206-1-AP (Claspin antibody) at dilution of 1:50 and Rhodamine-Goat anti-Rabbit IgG.



Immunohistochemical analysis of paraffin-embedded human stomach cancer tissue slide using 23206-1-AP (Claspin antibody) at dilution of 1:100 (under 20x lens). Heat mediated antigen retrieval with Tris-EDTA buffer (pH 9.0).