

For Research Use Only

# DLX6 Polyclonal antibody, PBS Only

Catalog Number: 23216-1-PBS

Featured Product



## Basic Information

**Catalog Number:**

23216-1-PBS

**Size:**

100ug, Concentration: 1 mg/ml by Nanodrop;

**Source:**

Rabbit

**Isotype:**

IgG

**Immunogen Catalog Number:**

AG19724

**GenBank Accession Number:**

BC069363

**GeneID (NCBI):**

1750

**UNIPROT ID:**

P56179

**Full Name:**

distal-less homeobox 6

**Calculated MW:**

175 aa, 20 kDa

**Observed MW:**

32 kDa

**Purification Method:**

Antigen affinity purification

## Applications

**Tested Applications:**

WB, IHC, Indirect ELISA

**Species Specificity:**

human, mouse

## Storage

**Storage:**

Store at -80°C.

**Storage Buffer:**

PBS only, pH7.3

For technical support and original validation data for this product please contact:

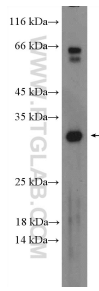
T: 1 (888) 4PTGLAB (1-888-478-4522) (toll free in USA), or 1(312) 455-8498 (outside USA)

E: [proteintech@ptglab.com](mailto:proteintech@ptglab.com)

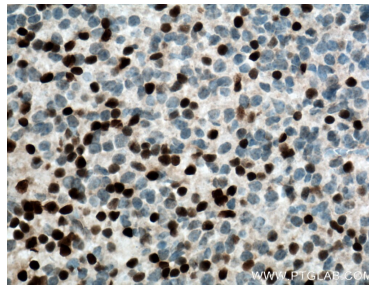
W: [ptglab.com](http://ptglab.com)

This product is exclusively available under Proteintech Group brand and is not available to purchase from any other manufacturer.

## Selected Validation Data



NCCIT cell were subjected to SDS PAGE followed by western blot with 23216-1-AP (DLX6 Antibody) at dilution of 1:100 incubated at room temperature for 1.5 hours. This data was developed using the same antibody clone with 23216-1-PBS in a different storage buffer formulation.



Immunohistochemical analysis of paraffin-embedded mouse embryo tissue slide using 23216-1-AP (DLX6 Antibody) at dilution of 1:200 (under 40x lens). Heat mediated antigen retrieval with Tris-EDTA buffer (pH 9.0). This data was developed using the same antibody clone with 23216-1-PBS in a different storage buffer formulation.