

For Research Use Only

LRRC47 Polyclonal antibody

Catalog Number: 23217-1-AP

Featured Product

3 Publications



Basic Information

Catalog Number: 23217-1-AP	GenBank Accession Number: BC031301	Purification Method: Antigen Affinity purified
Size: 150ul, Concentration: 350 µg/ml by Nanodrop and 167 µg/ml by Bradford method using BSA as the standard;	GeneID (NCBI): 57470	Recommended Dilutions: WB 1:500-1:2000 IHC 1:20-1:200 IF 1:20-1:200
Source: Rabbit	Full Name: leucine rich repeat containing 47	
Isotype: IgG	Calculated MW: 583 aa, 63 kDa	
Immunogen Catalog Number: AG19736	Observed MW: 63 kDa	

Applications

Tested Applications:

IF, IHC, WB, ELISA

Cited Applications:

CoIP, IHC, WB

Species Specificity:

human, mouse, rat

Cited Species:

human

Note-IHC: suggested antigen retrieval with TE buffer pH 9.0; (*) Alternatively, antigen retrieval may be performed with citrate buffer pH 6.0

Positive Controls:

WB: mouse liver tissue, L02 cells, Neuro-2a cells, NIH/3T3 cells, rat liver tissue

IHC: human pancreas tissue,

IF: L02 cells,

Background Information

Notable Publications

Author	Pubmed ID	Journal	Application
Michael Ameismeier	33208940	Nature	WB
James A Saba	37961604	bioRxiv	WB
Eric Hendricks	37590144	Cell Rep	WB, CoIP, IHC

Storage

Storage:

Store at -20°C. Stable for one year after shipment.

Storage Buffer:

PBS with 0.02% sodium azide and 50% glycerol pH 7.3.

Aliquoting is unnecessary for -20°C storage

*** 20ul sizes contain 0.1% BSA

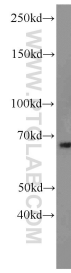
For technical support and original validation data for this product please contact:

T: 1 (888) 4PTGLAB (1-888-478-4522) (toll free in USA), or 1(312) 455-8498 (outside USA)

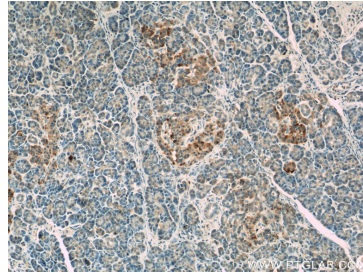
E: proteintech@ptglab.com
W: ptglab.com

This product is exclusively available under Proteintech Group brand and is not available to purchase from any other manufacturer.

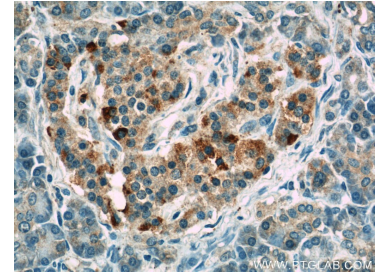
Selected Validation Data



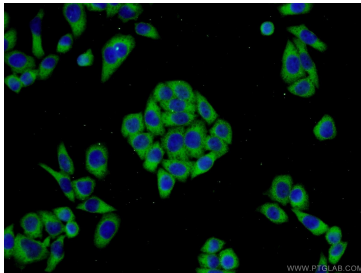
mouse liver tissue were subjected to SDS PAGE followed by western blot with 23217-1-AP (LRRC47 antibody) at dilution of 1:1000 incubated at room temperature for 1.5 hours.



Immunohistochemical analysis of paraffin-embedded human pancreas slide using 23217-1-AP (LRRC47 Antibody) at dilution of 1:50.



Immunohistochemical analysis of paraffin-embedded human pancreas slide using 23217-1-AP (LRRC47 Antibody) at dilution of 1:50.



Immunofluorescent analysis of L02 cells using 23217-1-AP (LRRC47 antibody) at dilution of 1:50 and Alexa Fluor 488-conjugated AffiniPure Goat Anti-Rabbit IgG(H+L).