

For Research Use Only

# ATG2A Polyclonal antibody, PBS Only

Catalog Number: 23226-1-PBS

Featured Product



## Basic Information

**Catalog Number:**

23226-1-PBS

**Size:**

100ug, Concentration: 1 mg/ml by Nanodrop;

**Source:**

Rabbit

**Isotype:**

IgG

**Immunogen Catalog Number:**

AG19709

**GenBank Accession Number:**

BC110650

**GeneID (NCBI):**

23130

**UNIPROT ID:**

Q2TAZO

**Full Name:**

ATG2 autophagy related 2 homolog A (S. cerevisiae)

**Calculated MW:**

1938 aa, 213 kDa

**Observed MW:**

215 kDa

**Purification Method:**

Antigen Affinity purified

## Applications

**Tested Applications:**

WB, IHC, IF/ICC, IP, Indirect ELISA

**Species Specificity:**

human

## Background Information

Autophagy-related protein 2 homolog A (ATG2A) belongs to the ATG2 family. ATG2A is a lipid transfer protein involved in autophagosome assembly (PMID:31271352). ATG2A tethers the edge of the isolation membrane (IM) to the endoplasmic reticulum (ER) and mediates direct lipid transfer from ER to IM for IM expansion. ATG2A binds to the ER exit site (ERES), which is the membrane source for autophagosome formation, and extracts phospholipids from the membrane source and transfers them to ATG9 (ATG9A or ATG9B) to the IM for membrane expansion (PMID: 30952800, PMID: 31271352). ATG2A also regulates lipid droplet morphology and distribution within the cell (PMID: 28561066). The observed MW of ATG2A is 215 kDa.

## Storage

**Storage:**

Store at -80°C.

**Storage Buffer:**

PBS Only

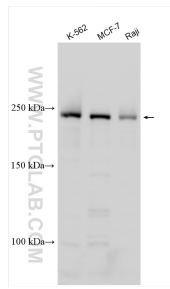
For technical support and original validation data for this product please contact:

T: 1 (888) 4PTGLAB (1-888-478-4522) (toll free in USA), or 1(312) 455-8498 (outside USA)

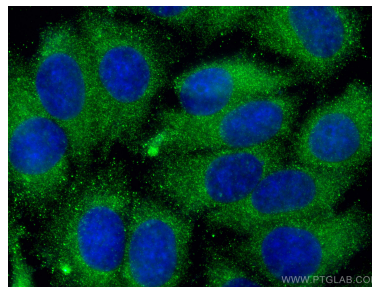
E: [proteintech@ptglab.com](mailto:proteintech@ptglab.com)  
W: [ptglab.com](http://ptglab.com)

This product is exclusively available under Proteintech Group brand and is not available to purchase from any other manufacturer.

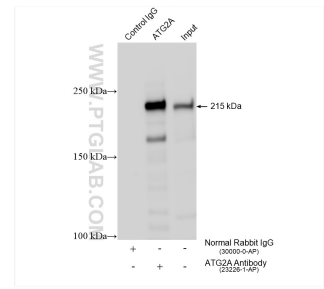
## Selected Validation Data



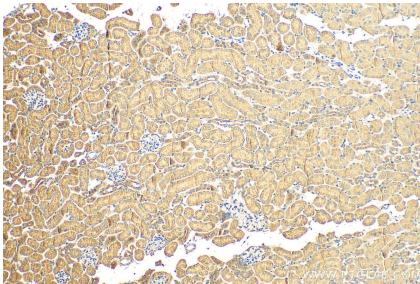
Various lysates were subjected to SDS PAGE followed by western blot with 23226-1-AP (ATG2A antibody) at dilution of 1:4000 incubated at room temperature for 1.5 hours. This data was developed using the same antibody clone with 23226-1-PBS in a different storage buffer formulation.



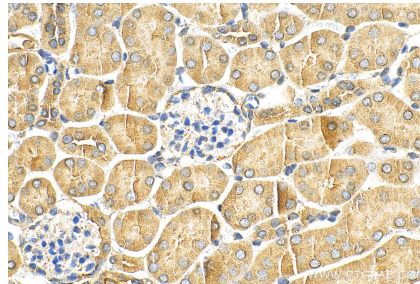
Immunofluorescent analysis of (-20°C Methanol) fixed MCF-7 cells using ATG2A antibody (23226-1-AP) at dilution of 1:200 and CoraLite® 488-Conjugated AffiniPure Goat Anti-Rabbit IgG(H+L) (SA00013-2). This data was developed using the same antibody clone with 23226-1-PBS in a different storage buffer formulation.



IP result of anti-ATG2A (IP:23226-1-AP, 4ug; Detection:23226-1-AP 1:4000) with K-562 cells lysate 2400 ug. This data was developed using the same antibody clone with 23226-1-PBS in a different storage buffer formulation.



Immunohistochemical analysis of paraffin-embedded mouse kidney tissue slide using 23226-1-AP (ATG2A antibody) at dilution of 1:500 (under 10x lens). Heat mediated antigen retrieval with Tris-EDTA buffer (pH 9.0). This data was developed using the same antibody clone with 23226-1-PBS in a different storage buffer formulation.



Immunohistochemical analysis of paraffin-embedded mouse kidney tissue slide using 23226-1-AP (ATG2A antibody) at dilution of 1:500 (under 40x lens). Heat mediated antigen retrieval with Tris-EDTA buffer (pH 9.0). This data was developed using the same antibody clone with 23226-1-PBS in a different storage buffer formulation.